

ITAN EDAGBON MWEN

J. U. EGHAREVBA

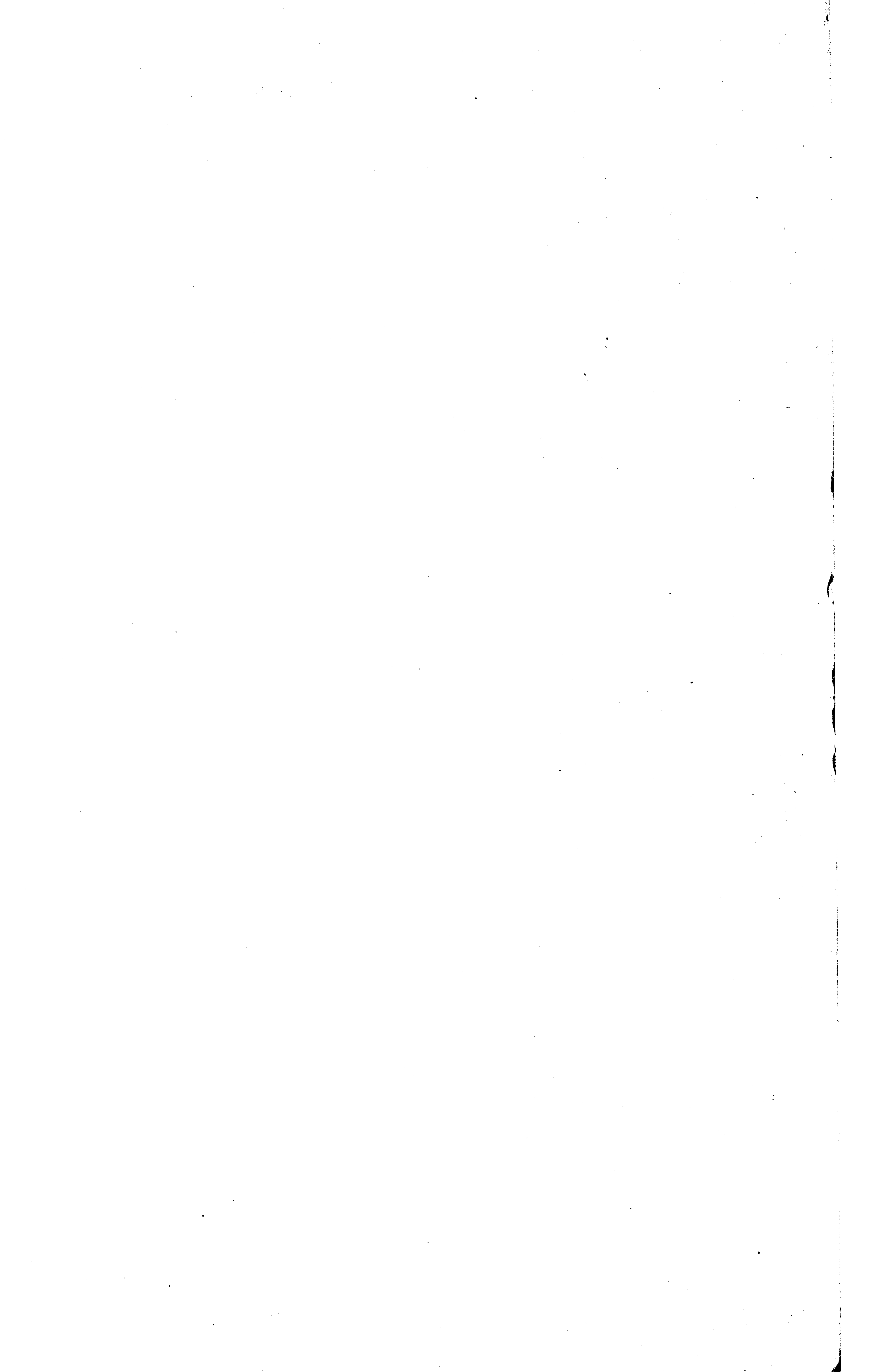


IBADAN UNIVERSITY PRESS & ETHIOPE PUBLISHING CO.

J. U. EGHAREVBA

ITAN EDAGBON MWEN

I. U. P. & E. P. C.



ITAN ẸDAGBỌN MWEN

BY THE SAME AUTHOR

Ekherhe vb' Itan Edo

A Short History of Benin

Okha Edo

Agbedogboyo

Ebe Imina

Benin Law and Custom

Concise Lives of the Famous Iyases of Benin

The Murder of Imaguero and Tragedy of Idah War

Benin Games and Sports

Urodagbon

Ihuan Edo

Some Stories of Ancient Benin

Some Tribal Gods of Southern Nigeria

Ozedu-Interpreter

The City of Benin

The Origin of Benin

Bini Titles

Ama z'evbo omwàn tawiri

A Brief Life of the Hon. Gaius I. Obaseki, C.B.E.

ITAN EDAGBON MWEN

by

JACOB U. EGHAREVBA

IBADAN UNIVERSITY PRESS

IN ASSOCIATION WITH

ETHIOPE PUBLISHING CORPORATION

1972

© Ibadan University Press 1972

Published 1972 by Ibadan University Press
University of Ibadan, Ibadan
and Ethiope Publishing Corporation
P. M. B. 1192, Benin City

Cover design by L. A. Anifalaje

PRINTED IN 12 PT. BEMBO
AT THE IBADAN UNIVERSITY PRESS
NIGERIA, AUGUST 1972

ITAN ẸDAGBỌN MWEN

ARHIEMA

Page

Ẹmwen N'Okaro	vii
Preface	ix
UHUNMWUN	
1. Erha kevbe Iye	1
2. Ubiemwen	4
3. Eghe Oguomwandia	6
4. Eghe vb' Eghute Ebue	9
5. Iruemwin	13
6. Iwina Isi-Evbo	15
7. Ugbo	17
8. Eki	19
9. Iwina Emasini Ebe	23
10. Isasegbe Iruemwin	25
11. Alele Oba Khian	27
12. Arioba Ogbakha	33
13. Eghe vb' Uselu	36
14. Museum Ra Owama	45
15. Iwina Ebe	51
16. Isi Emwin A na gualo Oto Ere	52
17. Orhion Izua	54

ARHIEMA—Continued

UHUNMWUN	Page
18. Ikọ kevbe Idobo	55
19. Ose	60
20. Eṣe kevbe Iruemwin-Eṣe	61
21. Urhomwẹn	63
22. Ogho	66
23. Owa Iyayi	68
24. Iku Eḡhe Imiobo	70
25. Owa Esuku	71
26. Adaze	73
27. Uhuamwẹn	74
28. Emwanta	75
29. Eḡhe	77
30. Oviẹn kevbe Iyoha	78
31. Eḡhe Emianmwẹn	80
32. Ekponmwẹn	85
33. A Gha Wu, Arie	88
34. Emwin Eḡhe kevbe Azeyukpo	90

EMWEN N'OKARO

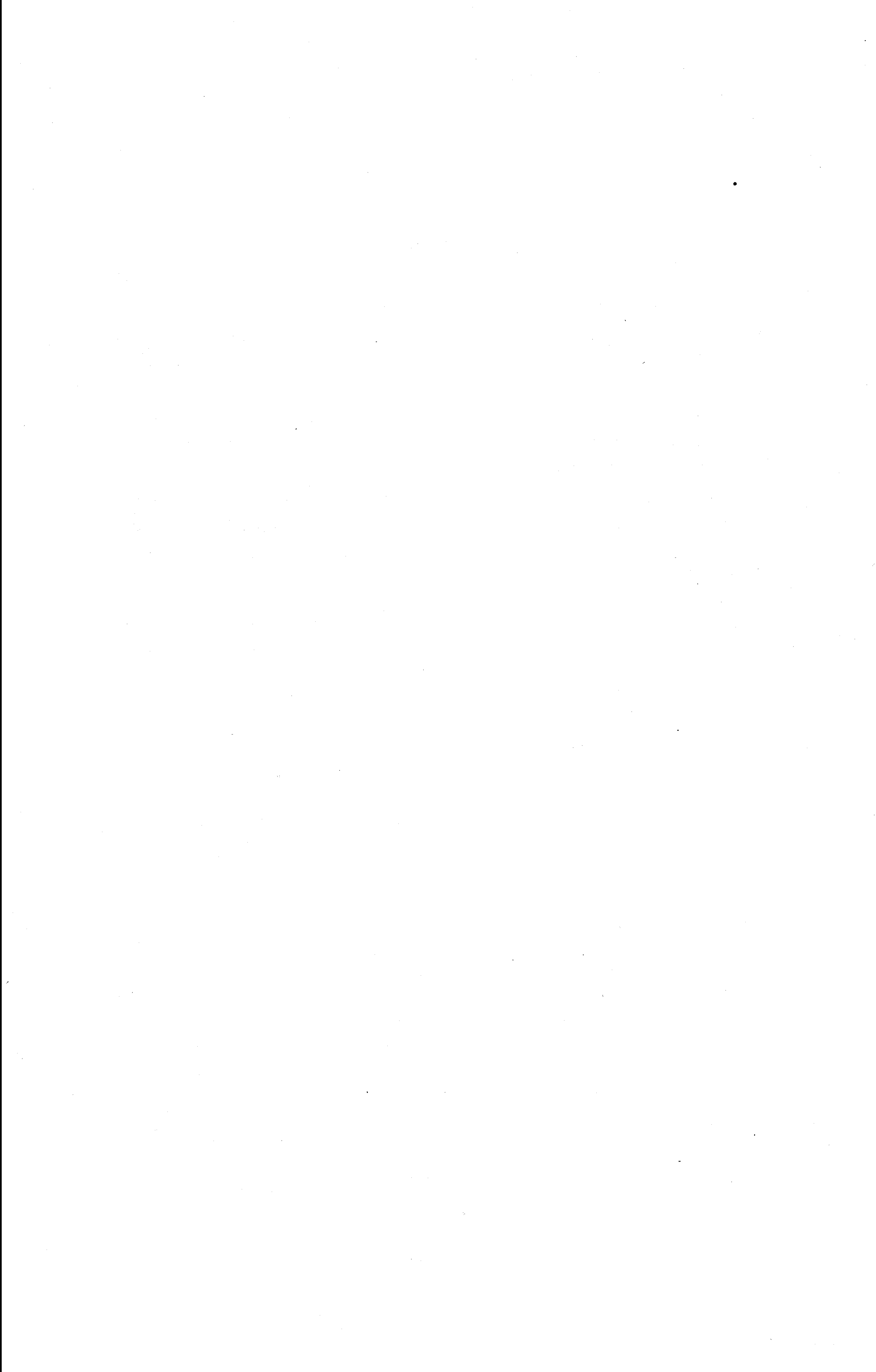
VB' AI gb'okhonmwe—okhonmwẹn, atobomwa gb'ẹn itan edagbon mwa, o ma se; o vbe gba se, rhunmwunda, a ren emwi n'a ru hia, kevbe ehe n'a yo hia se ne omwan ovbehe nota gben vba wu nen.

Men ota ihanedagbon mwẹn na hia ye 'tape recorder', me tobomwẹn ovbe mwan-mwan avbe arhiema, uhunmwun kevbe ayuhunmwun ni ro hia.

Irhie eghe na ya kponmwẹn Nikhavbise vbe Ibadan University Press niru emwanmwan na gben Itan edagbon mwẹn kevbe ni zomwan na gben emwen ni ta ye 'tape recorder' hia ladian, ke ni vbe lo igho yo.

CHIEF J. U. EGHAREVBA, M.B.E.

Benin City



PREFACE

THIS book, *Itan Edagbon Mwen* "A History of My Life", is an autobiography written in Edo by Chief Jacob Uwadiae Egharevba, M.B.E., Hon. D.Litt. the Obakhavbaye of Benin. Chief Egharevba is a foremost Benin historian who has dedicated himself since 1917, after his primary education, almost single-handedly to the documentary preservation of Edo history and culture.

Since 1957 his health has steadily declined; and this has raised considerable apprehensions not only in himself but also in all who know his worth—more so since he has been forced by loss of sight to a sedentary position. Nevertheless, Egharevba's educational spirit is still undaunted; and like John Milton of English literary fame he still writes and vets his works with an imagination pinned to the pen of his children.

In 1964 when he completed the manuscript on *Itan Edagbon Mwen* the author was seventy-one, an age which in normal circumstances might grade him as "an adolescent of old age". But as his retirement from active service became inevitable, it offered him a most suitable time to make recollections about his life. For "it is without doubt most appropriate" Chief Egharevba reiterates, "for one to write the story of one's own life, since it is only then the vividness and accuracy of one's own experiences can be guaranteed".

As *Itan Edagbon Mwen* shows, Chief Egharevba's life career has been a chequered one. After he lost his father in 1902 (at the age of ten), he served under various masters who were not directly interested in his education until he finally struggled his way through primary education in 1917. About ten years later, in 1926, when he had variously engaged himself as clerk, road overseer and trader, Chief Egharevba settled down in his new house to a five-year self-tuition correspondence course with the

Institute of Rationalistic Press Association in London. To this educational body he paid between six and twelve pounds per annum from his little earnings to improve his education and tone up his thought. His young wife, whom he took to himself in 1921, was wont to complain that Uwadiae gave more time to his studies and research than to her. His mother, the adorable Okunzuwa, until her death in 1936 also had her own apprehensions over her son's increasing Newtonic tendencies.

Nevertheless, it was all rewarding; and after he was admitted into the Benin Royal House of Iwebo in 1931 and later appointed its Recorder, he bought his own printing press to facilitate the flow of his publications on Benin history and culture, which have now grown to over twenty-six. In 1938, Oba Akenzua II awarded him the Chieftaincy title of Obakhavbaye of Benin which subsequently brought him into the focus of local politics. It was certainly Chief Egharevba's zest for the safety of the Benin antiquities that brought the Benin Museum into being in 1946. He was the Curator till 1957 when ill-health made him too weak to work. As curator, writer and public figure the chance further opened out to him to emerge as a most authoritative analyst of Benin history and culture.

Though he has retired to a quiet and patient life, his mind is still very active and his memory keen and retentive. This is what has made the writing of his autobiography possible, for "they also serve who only stand, and wait". Thus, besides giving information about his own life, Chief Egharevba has by *Itan Edagbon Mwen* made a memorable contribution to Edo literature. Until recently the general tendency among writers has been to use English as the only medium. Growing linguistic consciousness among African scholars has brought considerable attraction to the use of the native language. For Chief Egharevba this consciousness has acted only as a stimulus since for over thirty years he has delighted in writing many of his important works in Edo. In 1967 three years after he finished writing *Itan Edagbon Mwen*, the University of Ibadan crowned his efforts by the award of the degree of Doctor of Letters (D.Litt.) in *honoris causa*.

Edo College, Benin

S. B. OMOREGIE
Education Officer

UHUNMWUN I

ERHA KEVBE IYE

ERHA

IYASE OHENMWEN keghi re erhamwẹn odede. Eguobadia keghi re erha mwen nokhua. Egharevba keghi re erhamwẹn nekhere. Iran hia keghi re oduęki nafiangbe Ugben vbo ghi kpe esesemwense, vb'ieyke vbe Edo khon okuo Akure (Ekuę) ne n, emwa n Edo nibun kevbe erhamwẹn nokhua kegha duęki y' Akure kev be uwu Ekiti hia, ibiba eki'ovien. Nibun vb'iran ore ovbe wulo yo do. Erhame nekhere keghi re Edo, oke gha duęki egb' amę, IKOO, Iguohenmwẹn, Ughoton, Eghudu, Isi, Iyekovia, Iyekorhionmwon, Akure kevb 'en iban hia. Kevbe ihęki, oghi vbe weriegbe s owa henęden vbu wu ebe ke-vbe a fianma oghę eghe nin.

Erhamwẹn Egharevba kere okpia no wegbe, nodin, nei muohan emwinkemwin ke no vbe mwen e-rhion esesemwe-nse. Oke ghi re uvenmuven nokhua, even akpakpa kevbe e belebe ove-n. Osuru oy' akpan ma arhunmwun oworo vbe ven vb'u ghozolua vb' eghe Oba Adolo, ake rhunmwundonin mu ovan Egharevba no gbokpan ne—en. Oke ghi re o tise nokhua omwan ne setin khien ragbe vb' ise iro, ok e kaka-bo ren a-ro kugbe.

Ugben no ghi kpe fua esese-mwense, ze vbe omodion, ake gie na tie re no gha die Akure we, egbe ma ran erhae; ore ona gha khian, Emiamwẹn ni kpe oto rinrhi-nr-in vbo s'odo, erhae ke fiya, ren keghi tota kevien kevbe emwin erhae vbe vba, rhunmwunda, iran ma ho ni ran gha die Edo-hie hie.

Vbe eghe okpa ekhen ke ghi gie erhamwẹn vio iyokuo gha rie Ugb a khokho ya rie iyobo n' Okizi. Okizi keghi ghogho muen esesemwense; oke vbe khon mie n oto vb' uhunmwun eghian

onren. Oke vbe kponmwɛn ekhen no giɛ do rhie iyobo ne—en no na setin khon mien oto vb' uhunmwuneghian. Eriɔ ɔvbe kponmwɛn erhamwɛn-tobore. Vbiyeke oni erhamwɛn na weriegbe gha die Akure. Okizi kegha gbe ewe okpokpa n'erhamwɛn Egharevba kevbe emila okpokpa n'iyokuo ere edegbedegbe vb'iran te kpao vb' ugbakhokbo weriegbe gharie Akure. Ore iran na yae wan erhamwan ovan okuo na, 'Uwagbae n' ovbiogun, o giagia aranmwɛn ogun vbe oyara.'

Rhunmwunda ude amwon-onre-n nodion (Okunzuwa) oke khien ogbugbo vb'okiekie. Vbe omuhɛn 1902 erhamwɛn ke ya viɔ emwin onren eso y' Usɛn n'iren viɔ gha die Edo. Sokpan e mianmwɛn keghi muɛn udomwunri, vba ghi simwien se, gbei! Oke fiya vbe December ukpo 1902 ni, vbo te mu iro ere se. Anaru emwin negbere vbe January 1903, Erhamwɛn te tose wuse, erinmwɛn erha kevbe iye oru. Etioren: Ogbomo, Ibrahim Elaho, Eso, Asemwota, kevbe Salawu Efabo Eguobadia na gha die Edo vba ghi ru emwin negbere fo nen. Emwan hia rhie ogbo kevbe uyi ne-en ugbugbehia lede ore fo.

IYE

Iyemwɛn Okunzuwa keghi re ɔvbie Ogbede Uwangue, Ogie ovbi Ezomo. A-rhiere oha gie erhamwɛn. Obele erhamwɛn ye okuo Ugbakhokho. Iyemwɛn Okunzuwa keghi re ɔdueki okhua kevbe okhuo no saido. Ohin usi esesemwense vb'iwinna eveva ni. Ugbugbehia oya sa ido vbe dueki. Omion igbo vbe na mien, Omien gha re, omien gha da, omien ya gbaro gh'emwan ɔvbehe, ivbiere kevbe emwan ni gue dia. Omwɛn iyoha nibun.

Iyemwɛn (Okunzuwa) na gha die Edo vbe 1904. Oke vbe weriegbe gha rie Akure ya gbaro gh'iyee, rhunmwunda, okhin omaɛn nen. Vbiyeke vb'iyee ghi fiya, oke si fefefe gha die Edo vbe 1913. Ugbɛn vbo ghi gbe s'ukpo vbe Edo, oke ghi giemwɛn gha ri' Akure vbe December 1914 ni ya viɔ evien erhamwɛn gha de. Sokpan vbi s'odo, iran maho ni ran lele mwɛn gha de hiehie; sokpan ib'edo (okhuo okpa 'Oluato') ni lo igbo yi no lele mwɛn gha de, na rhie n' otɛnmwɛn nodion ronmwɛn. Vbiyeke, oni vbe 1915 evien hia fefefe kegha ke Akure ke ehe

hia fẹfẹfẹ re do gha y' uhunmwun rhanmwẹn oto vbe eguae vb' ore Edo kevbe wẹ, aghi vbe fanọiran fua. Rhunmwundonin ma ma ghi weriegbe ye Akure ovbehe.

Iyemwẹn yayi vbe 1916, oke s'amẹn mu obo yan uhunmwun vbe 1918. K'eghe ni gha de, oya kugbe nohuanren ote do lo-ede egbon renfo vbe 27 January 1936. Olokun okpa kekan ogho, oke do khin noyayi. Vbe Iyemwẹn ghi yayi ne Ohen Ologundudu same ne-en, Bishop Jones Ovbe mu obo yan ren uhunmwun. Ebe Atawẹ Iyemwẹn nokhua Ajayi mwẹn emọ ikhuo eha: Ediagbonya, Okunzuwa kevbe Akesogie. Ediagbonya mwẹn emọ ikpia eva kevbe okhuo okpa. Idehen Iriagbonse kevbe Igbinoba. Okunzuwa mwẹn em' ikpia eha; G. I. Egharevba J. U. Egharevba, kevbe E. G. Egharevba. Akesogie mwẹn emọ okhuo okpa Oni na bie vbe 1904.

UBIEMWEN

ABIEMWEN vb' ukpo 1893 vb' Idanre vb' iyemwen y' odo ya tuẹ ọten ọnen. Vbe November vb' ukpo 1898, ọre iyemwen nokhua (Ajaji) na mumwen gha rie Ibadan vb' eghe ni na ye kherhe. Vbe January vbe 1899 ọre ọ na rhiemwen y' esuku (School). I keghi yee l' ukpo ni fo fefefe ya s' ukpo 1900 ni na yo ekherhe vbe vbo ma ke gha die Akure.

Vb' eghe ni vbi r' Ibadan, i hin esin lele ore hia. Ta mumwen hin ọnen, ta vbe mumwen tuore. Edokpa vbi ya gh' ughe—vbe ore Ibadan kpolo gbe—i ke ghi wi, a gualo-mwen rin-rhin-rin, —aro vboro—iran ma miemwen. Rhunmwund' oni, iran na ya mu ema ọghe Bale Olu-Ibadan (Erha iyemwen nokhua), iran na gha kpere. I ghi hon urhu ema ni, i na gha gualo de, iran na ghi miemwen rhiemwen gha die owa.

Ọten iyemwen nokhua okpa (Okhuo—ovbi-erhae, ovbi-yee) na tiere Adeseke Awakan, ei mwen omọ sokpan, ọ mwen igho, esin, emila kevbe emwin iri hia fefefe—ke ghi yamwen y' omọ were, 'ren gha wu, emwin ọnen hia ehe no se, ehe no rhanmwen, ni rie chia vb' ukhu. Okhuo na ho-emwenmwen seri ovb' ekhoe we, ọ na khui ekpeti me *no dele ukpon vuon-en*: erhu, ibata, ewu, utalawe, kevbe agbada. Sevberio vb' eghe ni, iran te gha ho n' iran s'mwen iwu Iyoroba (Yoruba) sokpan, iyemwen nokhua ke ghi he were a wua rhunwunda, ovbi-okhaemwen nokhua ore i khin vb' Edo; obọ eveva: ob'erha kevbe ob'ie levbasevba, deghe iren somwen iwu Iyoroba, ren i miem owa lao. Rhunmwund' oni, iran na ghi semwen rae 'ma ghi te do kpao gha die Akure.

'Ma tota vb' Akure kherhe vba s' evba, 'ma na gbera gba rie Idanre n' ovbi-yee n' okhuo n' odion na ronmwen odo. A ke

ghi tiere Ediagbonya. O ke ghi ronmwẹn okpia okpa na tiere Imadiyi Okpokiti. 'Ma ghi kpao 'vba, 'ma na weriegbe gha die Akure. Ovbie Ediagbonya ni n' odion na tiere Idehen, ore mumwẹn y' Ibadan mumwẹn re rhunmwunda, vb' eghe ni, ze vb' ovbokhan, i setin khian esesemwense l' eghe no taen. Ugbenso, i gha vbe khian l' umondia eva ra, cha, o vbe mumwẹn.

Vb' ima r' Akure, erhamwẹn kevbe iyemwẹn ma ghi gumwẹn ghi y' esuku rin-rhin-rin—erhamwẹn te do fiya vb' ukpo 1902 vb' uki December. A ke ghi r' ere vbe January 1903.

I bebe gbe vb' eghe ovbokhan mwẹn. I gha ven, i gha gb' obodo, i gha takhiri, i gha rhule. A gha giewwem uhunmwun, i si oroho hiehie i ghi rere re. Emwan hia fefefe na vbe gha rhomwẹn yo.

Khinnoyayi vbe 1914, i ke vbe s' amẹ vbe March 7, 1915 vbe St. Matthews Church vb' Edo. A giewwẹn lele Bishop James Johnson gha rie Sapele vbe 1916. Ugben vb' ima ghi s' odo ni—rhunmwunda i ka gha wẹre i ma he se no mu obo yaen uhunmwun—sokpan, o ke ghi rhie obo yaen mwẹn uhunmwun nerhunmwun yomwẹn ere esesemwense rhunmwunda, n' orhion no huanren oghe Osanobua no ro-mwẹn egbe ghe kpao semwẹn rae. Imẹ, Agberomwan kevbe emwan ovbehe ore o gba gha khian; 'mẹ ore odion no v' iran gha khian. 'Mẹ o vbe v' iran weriegbe gha de ne Bishop na ghi l' odo gha rie Bonny no na wu vb' odo vb' ukpo ni. Men erha vbe iyemwẹn huemwẹn onren se vbe ivbi iran hia. Ohen Green o Same me, Bishop Phillip ovbe mu Obo yanmwẹn uhunmwun.

EGHE OGUOMWANDIA

VBIYEKE vba ghi re erhamwẹn fo ne, ze vbe na ru, a na rhiemwẹn n' ọten erhamwẹn (Ogbomo) no ze ke, i na lelee gha rie Eghute Oza n' Ogogoro. I na gha guce rin-rhin-rin ya s' ukpo 1906 vbe ni ma na y' esuku hichie. Vb' eghe ni 'vba, 'me kevbe ibieka ikpia eso na gba gha gua y' olokun (Koko) ya gha khien ivin kevbe ofingbon. 'Ma gha k' odo de, 'ma ghi dele emwin-ro gha de—avbe: ayon, opia, ekhae osisi, ize ebo, kevbe ukpon n' ima do gha khien vb' Eghute Oza n' Ogogoro. 'Ma vbe k' evba y' Agbo (Agbor) ya gha khiene emwin-ro hia fefefe n' ima vio k' olokun ni re.

Vb' eghe ni na gha r' Eghute Oza n' Ogogoro na vbe 1906, ore i na ren Ogie Agbo na tiere Igbinoba. I setin tiere omwansiesi ze e vbe ni huaro ya mion-vb' owa he: 'ma eva rhunmwund' ogho no mu y' ima egbe. Iran ghi tue y' ima ne, ore o na ladian. O ke ghi tue ima esesemwense vb' ima khama onren were Edo ima khin sokpan, okpen Eghute 'ma ye (Eghute Oza n' Ogogoro). O tue ima esesemwense o na y' evbee n' ima, 'ma na gha rie owa. Rhunmwund' itan eso no kaen Obi Agbo ni renren, ore o ze ni na gha khian. Edokpa vb' ima vbe k' Agbo de vb' ode, 'ma ghi s' ehe okpa, 'ma na gha no avbe ikhuo eso deghe iran mwẹn ako na khien. Ore okpa vb' iran na da tu we: Ki-mede, ki-mede (vbo khin ra, vbia ru?) Ore avbe ikpia eso ni r' uwu-oha na san-no ladian gha khu ima khian. Ma ghi ze rule, rule, rule, iran ma setin vbae ima, 'ma te ya s' eki Oza n' Ogogoro. Ugben vba ghi s' cwa, ikpedeha gbalaka ore i yae vb' oto. Afierhan na mumwẹn, oni na gha gbemwẹn rhunmwund' ule-dan n' ima rhuru ni. Ona ghi rhie ewaen n' ima k' eghe ni gha de we, 'ma ghi te gha y' Agbo, 'ma ghi gba s' ene ra, isen.

Vb' Eghute Oza n' Ogogoro ni, edokpa n' ima kpao gha rie olokun ore am' erhen na hihe kuomwen egbe hia, egbemwen iha na bolo-a. Omwan rokpa ma te y' aro yo ghi gha fe. Osanobua wina iwina oyunu-a, o ke ghi fo. Evba 'ma ghi ke si kpao gha rie Eghute Oza n' Isi. Eghute Oza n' Isi ni, 'ma ke vbe gha gua y' olokun. 'Ma kakabo kpe 'vba esesemwense.

Okpia okpa na tiere I. T. Palmer, ore o bu Eghute Oza n' Ogogoro. Oten erhamwen ovbehe na tiere Ibrahim Elaho oreov' ima gha rie Oza n' Ogogoro. Ibrahim Elaho na, ore o bu Eghute Oza n' Isi. Sokpan, eni Ogbomo ore o ghi ladian vb' Eghute ni, rhunmwunda, Ibrahim Elaho no buere ma tota 'vba kpe rhunmwunda, o khian yo, khian re. 1908, ore o kpao vb' evba ni re fefefe; o ma ghi weriegbe yo. Ogbomo, otenmwen ni gue, o kakabo tota kpe 'vba. O ke ghi mwen emo eva (ikpi-kpia). A ke ghi tie n' odion, Aghahowa kevbe n' ukpogieva, Adam Ekomwenrenren. Ugben vbo ghi s' ukpo 1908, ovbiere n' odion ni (Aghahowa) ke ghi wu. Vbe n' emwen omo ni dae se, na w'iren gha gualo oto emwin no gb' iron re. O na muegbe, o na rhie iyee, oten iyee okpa kevbe ime, 'ma na kpao gha rie Evbokhinmwini vb' Esan. A ghi s' oghe obo, obo ni ima do vba ni na we n' ima enene mudia; ore ima na mudia y'efonkpa. O na ku ga ima yo, ku ga ima re gheere. O na we, emwin ovbehe i ro, obo iy'omo, emwin no gb' ovbiere ye. O na we, aiyin-ese ore o gbee. Vb' uwuere ni obo ni ke ghi no Ogbomo omwan ni khin ere. Ore o na khama onren we, ovbi-ren i khin sokpan gelegele, ovbi-oten iren n' odion i khin; erhamwen wu ne. Ore nene obo na khama onren no gbaro ghemwen ese were, ede gha rie, a gha hon emwemwen l' oto agbon hia kevbe we, i gha vbe khin okpomwan nokhua levbasevba, i gha vbe sike obo esesemwense. O na we erio iren gha setin tae se sokpan, no gbaro ghemwen esesemwense. O ghi t' oni fo ne 'ma na gha dio owa.

Sokpan, se 'hia, ugbugbehia i ya khama otenmwen wi gha y' esuku. O ghi w'iren hon-en gh' iren gha rhiemwen yo. Sokpan, vb' ore 'vba, Osanobua ke ghi rhie ovbi-edo okpa n' akowe ke ghi r' evba na tiere Joes Ogbonmwani Ivbievbokun. O ke gha ma usun ibieka eso ni r' ore evba ebe. Vb' uwuere ni, i ke ya debae iran. Sokpan, vb' okieke, 'me o ghi k' aro n' iran hia fefefe vb' iruemwin. Ze vbe n' iruemwin ebe na rue gha kakabo ton

se vb' ekho-mwen ni y' esuku, vb' ukpo 1907, i ke ghi weriegbe ye otenmwen re ghi ho ni y' esuku. Sokpan, o ke gha rerenmwen ni ghe mien ehe na le vb' hon vb' uwebo-webo ni gheya lele ihuamwen eso gha rie evboebo (England). Rhunmwund' oni, o na ya rhiemwen ye Government School vb' ore Edo. Vbi ghi yee l' uzola okpa, o ke vbe weriegbe rhiemwen gha rie Oza. O ke ghi khama-mwen ghi gha weriegbe k' Oza re, i wa do suen. Rin-rhin-rin—, o ma ghi weriegbe rhiemwen yo.

L' eghe ogumwandia mwen fo, t' Ogbomo, ibieka re kevbe emwan hia fefefe rhomwen gbugbehia rhunmwunda, emwin k' emwin na rhie me ru, i ghi ruee hen-ne-hen-ne. Iwina k' iwina na mu me wina, i ghi wina-en esesemwense gbera vbe na ho. Emwin rhokpa i konmwen aro hiehie.

O kere na ren we, ugbo ke ghi r' emwin kpataki vb' agbon emwan nekhui kevbe emwan hia. I lele erhamwem kevbe emwanmwen eso y' ugbo vb' Akure. I vbe gb' ugbo obomwen vb' Eghute Ebue. Ugbo eva ore i gbe vb' evba ni vbe 1910 kevbe 1911. Rhunmwund' oni, o kere na mu aro y' ugbo na gbe rhunmwunda, evbare na re hia, ni mu egbe mwen kevbe ni y' egbe mose, ugbo chia ke re. Vbekpae emwen ugbo, i gben kan onren vb' ebemwen okpa (*Origin of Benin*) uhunmwun ugie,

Ona do s' ukpo 1909, ze vbe n' iyemwen nokhua khamamwen we, t' iren wu ra, t' iren r' agbon, ni gualo ode k' ode ni gha na y' esuku rhunmwunda, iha erhae (Oronmila) khare we, ebe ra iwina ebe, ore i gha wina l' ede agbonmwen hia. Rhunmwund' oni, i ke ghi kpao debae Ivbievbokun (akowe Ibrahim Elaho) kevbe otenmwen (ovbi-erhamwen vb' iyemwen) kevbe ovbie Ibrahim Elaho ("Jimoh") gha rie Eghute Ebue ya y' egbe ko Lawal Aguebo Osula. Levbasevba, ti ye gha rue emwin vb' obo Ivbievbokun o te do kpao 'vba re vbe 1910.

Ebe otowe: Eghe ni na r' Eghute Oza n' Ogogoro vbe 1906 gha de ore i ke ren Isekiri kpataki ni ro vb' eghe ni: avbe Nana, Dogho, Ololo, Okpogho, Omawumi, Beghi, Mayo, Maleghemi, Okpokhuo Yeye kevbe iran nikpa hia. I lele Omawumi y' olokun vbe Bilisibi kevbe legheyo vbe 1908. I vbe lele Okpokhuo Yeye y' Olokun vbe Koko kevbe Bilisibi. Iran hoemwennmwen gbe.

EGHE VB' EGHUTE EBUE

VBIYEKE vbi y' esuku l' uzola okpa vb' ore Edo vb' Ogbomo weriegbe rhiemwen gha rie Oza, i na do mien okhuo okpa no kakabo mose na tiere Omoloto Osodi. Okhuo na ke ghi r' omamwanmwin (teacher) vbe Government School vb' Edo; o rie 'vba do tota y' eghe. Nene Okhuo ke gha ma ibieka emwin ason k' avan, ore i na suen gha y' eveva.

Okhuoba Osodi na, notiamobo no. Vb' eghe ni, o ke ghi tie ama obomwen khama mwen we, i gha mwen igho, mwen emo, mwen emwin hia na ya yin agbon esesemwense sokpan, ede gha rie, egberhanmwen i khian gha ro me. Emwen ni ke ghi gbemwen egbe gb' okhuen yomwen eko esesemwense, i na gha muen ro gbugbehia. Vbo ghi kpe fua ne esesemwense, 'me tobomwen na do rue iwina ni (ama-obo na tie) gue ni na weriegbe tobomwen do tiere. Ugben vbi tiere, uhien emwin tin-nien okhuo ni kue khama mwen vb' eghe ni.

Vb' eghe okpa, otenmwen n' odion (Agbadamsi Egharevba) ke do tuomwen vb' Ebue. Ore i na rinmwian okhuo ni no tiere obo. Ugben vbo ghi tiere fone, o na khama onren ne ghe y' obo kaen osisi na fi, gbera oni, 'ren i ma mien emwin rokpa vb' egbere, sokpen ebe osisi. Vberio, otenmwen ka y' obo kaen osisi ogbeni okpa ne (Okpokiti) n' ogbeni ni na he osisi ne-en were, 'ren mu osisi mwen vb' izabo, o na gheghe ya y' obo kaen onren. Vba rinmwian ogbeni ni se no mu osisi ere weriegbe, gbe-i, o ma kue. Vbiyeke oni, Agbadamesi na do kpao gha die Edo. O ghi s' Edo, o na gha rie Udo, O ghi s' evba osisi ogieva're na mu go vbo ya tuoe, o na ton-en-mu mwen vbe no khian fi, O re osisi ni na don ya vbae okpan n' okhuo okpa kpe vb' obo no na yanghanren ruan giegegheghe, vbe no ma na vbae okhuo ni

gene-i. A ke ghi kponmwɛn Osanobua, evba ọ na gie na khamamwɛn vb' Eghute Eɓue emwin nọ s' unu. Ọ ke ghi kakabo kpaemwɛn odin, vbe n' okhuo gele deghe he. Ọre i na bu arowamwɛn (Lawal Aguebo Osula) nọ laho nọ sumwɛn gha rie oghe ogie Eɓue n' ima ya t' emwɛn osisi ogbeni ni fo. Osi r' evba kekan, ohan i gia y' obo kaen onren. Ọre Aguebo na we, emwanta nọ; ọ na gele lelemwɛn gha khian. Aguebo ke ghi gumwɛn rinmwian ogie Eɓue nọ y' emwɛn ni l' ekhue mwɛn rhunmwunda were ovbokhan esiesi 'ri khin. Ọre iran na ghi fianmwɛn iyewe, ekpeti kevbe evbee a na gele yae l' ekhue mwɛn.

Vb' eghe okpa, Aguebo na do mu ikpon 'kesugie me munwɛn. Ọ na gha rhie vb' igho ni kherhekherhe. Ugben vbọ ghi s' uki ehan gbera, Aguebo na gha ro w' igho ni fo ne, ọ ma ghi weriegbe rhie vbọ. Ọ ghi na do s' edokpa vb' eghe ghi rie od'ukpo okpa nọ mu igho ni me da yi, Aguebo ke gha vian were ren ma mien igho lo n' iren ya ru emwin eso. Ọre i na y' ere re were igho esoye ke vb' obomwɛn. Ọ na we, aan, i na we, een. Ọ na we ni ya rhie re. Vbi ghi rhie re, igho nọ kere ke ghi r' ikpon eva vb' isele igbe. Ọ na kponmwɛn mwɛn mienmwɛn 're kakabo ghogho yo esesemwense. Rhunmwund' emwin emwanta ni ru y' ore aro ni, ọ na nerhunmwun me weriegbe gha kakabo hoemwɛnmwɛn 'sese. Ọ ghi kpe fua kherhe, ọ na tiemwɛn y' ovbiere n' odion me na tiere Ayi. Sokpan, otenmwɛn n' okhuo nọ romwɛn Aguebo na tiere Ajari ke ghi tiemwɛn gh' iyeke khamamwɛn ni ghe rhie omọ ni nọ ya me sokpan, ni ye gha gae vbe ni ka gae rhunmwunda, omọ ni ma kh' omọ nọ gha setin tota y' owa okpa rhunmwunda, iyee ma die ehe okpa ya hiehie. Ọre i na gele ru vbe n' otenmwɛn bumwɛn ude. Vb' emwan-ta uhunmwun-emwɛn, ovbokhan ni, do d' ere ma gele tota vb' owa okpa ze vbe n' otenmwɛn gele kha.

Vb' eghe vbi ye r' evba ni, oten Aguebo okpa (Okhoro)—ovbi-erhae, ovbi-yee—na vbe gha r' evba. Edokpa, ọ ghi ghemwɛn ghegheghe, ọ na we: Osume! U gha rie evbare, ebe u tie, u gha tota, ebe u tie, u gha lovbie, ebe u tie, ugha gu' oko vb' eze, ebe u tie. Ọ na we, ei mwɛn ni ghe khin akowe nokhua ede ovbehe rhunmwunda, i y' ebe ku hiehie. Ọ we, edokpa, i na gha tie ebe, ọ w' iren ghi kpao do ghemwɛn, iriovbe i na gha tiere. Ukpo 1930 ọ wu, Aguebo wu vbe 1932.

Vb' Eghute ni, okpia okpa: Nath E. Cool—ovbie Sierra Leone —ke gha wina iwina ekontrato igedu (timber contractor) vb' ghato Miller Brothers na ghi tiere UAC na. Vb' eghe 'so, vbo oto rie ehe ovbehe ya gbaro gh' iwina, o ghi s' iwina no r' Ebue rae ni guce gha gbaro ghere. Avbe ebo gha re 'me o z'edu n' avbe emwan-iwina (labourers). 'Me o vbe tie eni iran owio-wie mwanmwan iran y'iwina. Rhunmwund' oni, i ke ghi hin usi l' ore Ebue hia. Eri o i guce gha wina iwina na khian rin-rhin-rin, vbe ni ma na mien-re ighe ikped'owie-okpa.

Ukpo vb' ughughamwen ore o vbie eghe k' eghe no ya rhirhi re o te do kpe fo vb' evba ni. O ghi kpe fua ne esesemwense vb' eghe ni na gha wina vbe Port Harcourt vbe 1918, 'me kevbe okpia na na weriegbe do de kun egbe. 'Ma ke tue egbe esesemwense, ore ima na ya ren owa egbe. Sokpan, i te do kpe fo vb' evbo ni gha rie Okigwe, o ma mien emwin rokpa ru me ya sanmwen ese ni ka ru ne-en vb' Edo yae z' ere we, Use ore emwin hia khin. Ugben vbo ghi se 1948 vb' eghe ni na gha re Museum, ore a na rhiemwen y'otu oghe preservation of antiquities of Nigeria. Edokpa ke do re, otu ni ke ghi mwen iko ogbakhia vb' Eko. Ore i na mwegbe. Ok'ehoho ore i laok' Edo gha khan. Ugben vb' oko ghi tuore vb' Ikeja ekhen hia na tuore lao imoto—'Air Services' gha rie ehe no na mu ekhen s' oto. Vb' uwuere ni, 'me vb' okpia okpa na suen gha guankhian. 'Ma ghi ze guan ore ota na s' ota, ore okpia na na khamamwen were ovbie-'Cole' vbenia 'ren khin kevbe we, o wu ne nia. Ore i na khama onren we, nene omwan na kha na (Nowanren Cole), owa-mwen o dia vb' eghe no na gha r' Ebue fian igedu. I na vbe khama onren vbe ni mion-en he vb' eghe ni na gha re Port Harcourt. Ore ovbiere na we, emwanta no ghi ma zede t' ohoghei uhien, nene Port Harcourt, ore a na b' iren kevbe we, erha iren khama iren. Ovbiere na ke ghi re 'Chairman of Trade Union of Nigeria' vb' eghe ni dandan-dan na kha na. Ma ghi s' ehe n' ekhen hia na tuore n' imoto 'Air Services' mu emwan se, 'ma hia na tuore. Ehe ni k' evba ye rie, a ghi z' ighe la imoto a te setin soe, sokpan okpia na na we ni la imoto ere ohe, o na mumwen gha rie ehe ni dia. O na ke ye vbe ere n' Edo ze we: No gu ese no gu akhaen no gha mwen, ese i wi, akhaen i wi, nei mwen ereiro: chia r' aza ne no ru iran. Eri o vbe ye vb' emwen n' ogbenbe nokhua ni oghe evboebo

na tiere (Shakespeare). O wẹ: orhõnghõn ẹse i wi, o ye vbe evbu nọ tuo k' aro iso rie oto. Orhunmwun eva ẹse bọ, o gha bọ na ru na, o ghi vbe bọ nọ ru n' ọmwan.

Vb' omuhẹn 1910, enọti (nut) ọkpa ke ghi wi vb' ikeke ọten-mwẹn ovbiyemwẹn: G. I. Egharevba. O na wẹ, a kpa wẹ iren miẹn ọmwan nọ ya rhie enọti gie iren vb' ikeke n' iran koko de vb' Eghute Oza, ren gha ghõghõ. I na wẹ i gha yo ya rhiere giẹe, i na gha khian. Ede n' ogieva, i na rhiere gha de'. I gbera Iguoloi—egbo nọ r' adese Iguoloi kevbe Ebue—omwan ifuanro ugie ore iran na dizigha vb' iyekemwẹn. I ghi s' eki Ebue, emwan eso na do vbamwẹn 'vba; iran y'ulule de. 'Ma ghi tuẹ egbe ne, iran na tamamwẹn wẹ, iran gb' ọmwan y' ode banban vb' egbo nọ re Iguoloi kevbe Ebue. Ore i na khama iran wẹ Odoni i ke de na. I na gha die owa. I ghi s' owa, ore i na khama iran, iran na gumwẹn kponmwẹn Osanobua ghi l' ebe fe hen-ne-den.

1911, ore iyemwẹn odede fiya vb' ore Akure sokpan, i ma rherhe hõn vb' Ebue.

UHUNMWUN 5

IRUEMWIN

UGBEN vbi ghi vbe hon hun-hun-hun gh' iran de do rhiemwen vb' Eghute Ebue, i na ghi k' evba kpao gha rie Akure. I ghi s' Akure vb' owarokpa ni, ke ghi weriegbe suen iruemwin vbe St Davis C.M.S. School. A te rhiemwen, iran danmwennmwenn vb' uhunmwun ebe okpa, i gbera, vb' uhunmwun ebe eva, i gbera, vb' uhunmwun ebe eha, i gbera, iran na rhunmwund' oni semwen rae y' uhunmwun ebe eha ni we, o gha s'uki ene, a ke rhiemwen gbera gha rie uhunmwun ebe ene. Ugben-so, i vbe gha gu uhunmwun ebe isen ru emwin. O ghi kpe fua kherhe vb' iran mien vbe ni renmwin he, iran ke gha z' iro n' iran rhiemwen gha rie "St Andrews College" vb' Oyo. Sokpan, emwan-mwen ke ghi he, iran ma kue rhunmwunda, iran ke gha ro we, u gha ghe, iran gha somwen iwu Iyoroba (Yoruba) rhunmwunda, a wua oni vb' Edo. Omwan no mwen iwu evbo ovbehe vb' eghe-nede, ei rie egie vb' Edo. Oni o ze ni ma na ghi yo. Oka omaemwanmwin (Head Master) no r' evba vb' eghe ni ke ghi re: Ohen Adejumo. Peter Adelan ke ghi re okpa vb' usun emaemwanmwin ima. I ghi gbe s' ukpo e'vba, i na weriegbe gha die Edo. I te kpao vb' ore Akure re, uhen omaemwanmwin Nowanren Adelan ma te kue ni gha de. Emwin no ze ke gha re we, o gha ke, i khian weriegbe y' esuku: deghe ti kpao. C.M.S. ore i vbe yo vb' Ibadan. I rhie otenmwenn E. G. Egharevba y'esuku vb' Edo vbe 1914.

Vbiyeke ugben vbi s' Edo vbobovbobo, i na suen esuku gha yo. C.M.S. vbe St Matthew, i vbe gha yo. Uhunmwun ebe isen ore i na suen vb' iran danmwennmwenn. Mr J. C. Babar o gha r' oka emaemwanmwin vb' eghe ni. Ohen E. E. Oluoba ke gha r' ototore.

Vb' uwu eghe ni na gha y' esuku vb' Edo vbe 1915, i ke gha gu arowa okpa na tiere 'Black Shaw' (Asst. Engineer) vbe P.W.D. Okpia na ke wa kakabo gha hoemwemwen esesemwense y' obo esi mumwen. I gha k' esuku re, o ghi ghemwen ebe hia fefefe: ehe no se, ehe no rhanmwen. Edokpa ghi re, i na gha gben ebe "Home Work Composition" na we n' ima k' owa ru re. Arowamwen ghi s' ehe ni na gha rue vbi gbon-en, vbiyeke vbo miemwen-re ghe, o ke ghi y'ore esesemwense. O ke ghi kha vbenia we: Jacob will make a good writer in future; Jacob is very keen; very faithful and truthful. Ore o na rhie nene ebe, o na doloe yi, o na s' ore rua, o na we ni weriegbe gben ovbehe. I ghi weriegbe gben ovbehe, o ke wa vbe gha ye rio zee. Ore ona we: That's all right, that's all right. Vberio o ya gha mamwen emwin khian vb' uhunmwun ebe isen kevbe ehan. Nowanren J. C. Babar kevbe Ohen E. E. Ohuoba kakabo wa gha hoemwemwen esesemwense rhunmwunda o ni' na mu aro y' ebemwen. Igbava ore a y' ebe me rhunmwund' irenmwin. A mu Bible me vb' okpa vbekpae Bible ni renren, a na vbe mu *Pilgrims' Progress* me vbe nokpa vbekpae itan kevbe igbenbe (Composition) ni renren. Ukpo 1916, ore i ladian vb' esuku. Nowanren J. C. Babar ke ghi rhie testimonial me.

IWINA ISI-EVBO

WARRI ighi gha rie vbe iz'obo vbe iwina akowe igho-ame. "Testimonial" na arowamwen (Black Shaw) rhie me kevbe na rhie me vb' esuku (St Matthew), i te la iwina vbe Warri, i y' iran gualo iwina kpe kherhe, i te do y' iran mi en iwina. Hospital (Owok-honmwon) vbe Warri i na ka y' iran gualo iwina rhunmwunda, evba kakabo wa gha yemwen na na wina. Obo Dr. Connet (SMO) no kha yaen nene wokhonmwon vbiyeke vbo danmwemwen ke ghi gben ebemwen gha rie Eko we, ewanien gha k' odo re ne, i do suen. Vbiyeke oni, i na gha rie P.W.D. Ebiwina (Application) ni gben gha khian, Nowanren Broom (Assistant Engineer) ghi ghere, o na kakabo kpa-ore odin kha were, ei r'ime o gbon-en. O na rhunmwund' oni we na rhie ebe men ni ya weriegbe gben ovbehe vb' evba. I ghi gben ovbehe ladian, uhien, ni kieke gben, o ghi ma se ni ka gha gben. Vb' owarokpa ni, o na wa rhiemwen. I wina iwina na l' uki ehan kekan. i ke z' obo vbo rhunmwunda, i ma setin zin egbe khe ukpo na we a gha rhie me (Chief Road Overseer).

I ghi ke P.W.D. kpao vbe Warri, i na lele Nowanren S.M. Udo gha rie ototo Igbo vbe Port Harcourt vbe May 1918. Vbi se Port Harcourt, P.W.D. i na ye vbe mi en iwina sokpan, iwina ni mi en ni ma ye vbe yemwen. Nana rhie Nowanren Udo kpao gha rie Okigwe no ya gha wina vb' odo, vbiyeke vbi ghi z' obo vb' iwina vbe Port Harcourt 'vba, o na gben ebe gie na tiemwen ni bu iren gha de. I ghi s' evba, o na rhiemwen y' iwina vb' ototo Ewedọ (Prison Department). O gbaro ghemwen 'sesemwense. Evba i ghi ke kpao vb' ukpo 1921 gha die Edo.

I ma ghi weriegbe kpao gha rie ototo igbo vbi s' Edo rhunmwunda, emwanmwemwen ma ghi kue ni kpao hiehie. Ibiba, Uwangue

n' Igiehon kevbe Oviērioba Agbelehi. Vb' uwuere ni, ore i na gben ebe ya no iwina vb' ototo Administration oghē Edo sokpan, Edaikē Edokparogbuyunmwun ke ghi khamamwēn ni ghē wina rhunmwunda, vb' eghe ni, ukpokpo ke ghi bun gbe 'vba. Ugben vbi ghi gualo iwina bakun vb' Edo rhunmwunda n' iwina nai ro, i ke ghi rhunmwund' oni kpao gha rie Sapele kevbe Warri ya gualo iwina lao. Vbi se Warri, iran ke ghi vbe weriegbe yan w' iran gha tiemwēn do wina vb' iwina gha ladian. Ore i na kpao weriegbe gha die Sapele. I ghi si Sapele, i na gben ebe gha rie Owokhonmwon (hospital); ebo n' osemwēn okpa r' evba, Obo Macline; 'ma gba wina vb' Okigue. Oni ke ghi gben ebemwēn gha rie Eko, o na wē, iwina gha re, i do suēn ghē mwēn n' iran ghē rhiemwēn.

UGBO

UGBO na gbe ra, iwina ugbo na wina ke ghi r' emwin iyi oto vb' evbo emwan nekhui hia fefefe, ibiba Nigeria k' oto gha de. Iwina ugbo ore emo ikpia hia ka wina iran ke la ukhukhu iwina ovbehe hia; iran gha lele erha kevbe arowa iran y' ugbo ugbugbehia rhunmwunda, avbe evbare na re hia fefefe, ugbo a ke vio iran re. A vbe rhie emwin iri kevbe okhokho vb' ugbo bare.

Rhunmwund' oni, ore i na lele erhamwen y' ugbo vb' ufomwen 1900 do se 1902. I lele otenmwen (Ogbomo) y' ugbo vbe 1903 do se 1904. Eri o ivbe lele Odigede kevbe Ayiri y' ugbo ya gu iran wina vb' omuhen 1905. Vbi y' Usen vb ufomwen ukponi (1905), i ke ghi gu Omigie kevbe Igbinoba ya wina vb ugbo iran. Me tobomwen vbe muugbo obomwen vb' eghe ni na ghar' Eghute Ebue vbe 1910 do se 1911. Eghe irhede vbe June 1912, i y' Itagbolu ya gu oten iyemwen (Odiasse Ogbeide Uwangu) wina vb' ugbo ore vb' uzola okpa gbalaka. Eri o i vbe gb' ugbo igari vb' ore Edo y' ehe na ghi tiere 'New Benin' na vbe 1915 do se omuhen 1917. Igho ni khien vb' igari 'vba, ei re kherhe! I vbe mu ugbo vb' uselu vbe ukpo 1932 do se 1934.

Iwina ugbo hia fefefe ore i setin wina. I setin fie, i setin gbo, i setin y' erhen, i setin khuen, i setin wu ema, i setin ba e eghec, i setin fie ema, i setin na e ema, i setin vio abo ema, i setin kpen ema, i setin vu iyan, i setin gb' erhu, i vbe setin ha iyan y' ugan vb' erhu. I vbe guara k' oka gbo oghede.

Vbe 1915 kevbe omuhen 1916, Ohen nokhua James Johnson ke ghi ma ima emwin ra, o ke ghi 'lecture' ima vb' esuku vbe St. Matthews C.M.S. vb' ore Edo. O ke ghi khama ima n' ima kakabo mu aro y' emwen ugbo na gbe esesemwense. Ivbiesuku ni r'evba vb' eghe ni ke ghi re: Ohen J. E. Okundaye, Nowan-

ren E. O. Igbinię, Nwanren, J. A. Isibo, Nwanren Oka, Nwanren Omęgui Osazuwa, Nwanren Omorogbe Isibo kevbe iran ovbehe hia.

Rhunmwund' oni, o kere n' emwan hia mu aro y' emwen ugbo na gbe esesemwense rhunmwunda, vbe na yaę bu ere we: A ma ru, ai re, ore okhokho ya due iku kevbe we, omọ mose, evbare o re. N' ima ghe kha we: akowe a khin, eminista (Minister) a khin ra, ekanso (Council), a ye, na mu emwen ugbo fua, ege ni n' ohanmwęn ghe re, n' ohawa ghe re, n' oya vb' ehorie ghe re hiehe.

A mięn nia we, ode ughunghan nibun ovbehe hia ore i na gu emwin na ru. Vb' igiemwin, i guara gb' ugbo, i guara do eki, i guara gu oko vb' eze, i guara khue vb' eze, i guara tie, ivbe guara ria iha, i guara tie amobo, i guara tie ebe, i guara t' okha, i vbe guara y' emasini (printing press) gben ebe. Me ore omwan okaro vb' ivbi-edo hia no ka gha de 'masini printing press, na ya gben ebe.

EKI

SOKPAN vbiyeke vb' osemwen Obo Macline gben ebemwen gha rie Eko we, ewaniyen gha re, i do sun iwina, i ke gha roro we, o ma ke ni wa tota kua kekan ebe te re vbe ni nai wina hiehie. Rhunmwund' oni, i ke ghi ho igbo, i na ya sun eki gha d' emwin vb' esobu (Shop) khien. Osanobua ke ghi fiangbe eki ni esesemwense vbi ghi ze duce. I gha khian ya d' emwin vb' esobu, i ghi mu igbo mwen sokpan iran wa fian hin me esesemwense. Ugbenso, i vbe we emwin bae ni de vb' esobu. I we emwin vb' Eko, London, Scotland, Southampton, Croydon kevbe ehe ovbehe hia. N' eki na na gha do me esesemwense, a ghi tiemwen vb' iwina, i ma ghi yo, i na we eki gha wa gha do; i na gha khien emwin welewele.

O ke do s' eghe okpa, egbe ma ranmwen, uhunmwun na gha vamwe Egbe no ma ranmwen ni ke ghi rhiamwen eki-ua esesemwense rhunmwunda, n' eki ni do na te gha khian ese. Rhunmwunda n' egbe ma na ranmwen ni, emwin hia ya s' egbe ame na won no re Sapele ma ghi guamwen egbe ro. I ye Owokhonmwon (hospital) vb' evba, Osanobua rue, omwan ni ka gha ren ke ghi r' evba: Dispenser Johnson. Okpia na ka wina vb' Edo yi; ovbie-Serra-leone no; o ke wa kakabo gbaro ghemwen esesemwense. 'Ren, ore o rhiemwen ma Obo Smith no na gha rhie ukhunmwun esiesi me ni gha lo rin-rhin-rin—i te do kpao gha die Edo vbe September 1923 do gbaro gh' egbe fo.

Vb' eghe ni na gha re Sapele ni 'vba, otenmwen okpa, ovbi-erhamwen, ovbi-yemwen: (Gabriel Erhabo Egharevba) ke gha r' akowe Nowanren Talib. Nene Talib ore o lele gha rie Sapele; 'ren o khien emwin ne-en vb' esobu. Vb' eghe ni mhekpao vbe

Warri re gha die Sapele, owa ọtẹnmwẹn ni ọre i ka gha dia, i ke do gualo owa obomwẹn gha ye. Ọtẹnmwẹn ghi ze wina, ọre arowa're Nowanren Talib vb' uki October 1922, o na we igho gbe y' ọre urhu—ikpon eva. O na w' iren gha ya y' olakpa muen. Ọre i na we no d' obo yi. I na we ọtẹnmwẹn, i ma yayi w' igho gha setin gbe y' ọre urhu rhunmwunda, ei si ukoko kevbe siga, ei da ayon, ei gb' alama oghe, ei guara s' opakharha s' egbera rhunmwunda, omwan emwin, ọre o rhie egbere yi rhunmwund' oni, vbo ze ni igho na gbe y' ọre urhu? Ọre i na khama ebo ni kevbe ogieva're were, i ho ni tobomwẹn ka emwin ni hia ni r'esobu, deghe 'riọ no. Iran na w' oma, gh' iran kue yo ni k' iran. Ọre i na mu ebe mwẹn tota y' aga. I ke ghi khama ọtẹnmwẹn no gbaro k' oto: ehe n' iran na ze y' ọre egbe gha ro, i te ka ehia fo no sa y' iran unu. Ọre i na suen gha ka emwin ni hia ni ro. Ighi gben ehia fo ne, ina roroee; igho no yan re keghire ikpon eva vb' ise iweva. Iran ghi ghere yo, ghere re, l' ode ni roroee la, iran na so, iran na we; iran na we omwan vbemwẹn wa kakabo vbe. Me okpa wanwan na, i setin k' emwin na hia fo fefefe, i ro-ere kugbe ze vbe no gele ye! Ọre iran na ye 'Singlet' kevbe 'Towel' okpa me, rhunmwund' ifuero kevbe irenmwin mwẹn. Uki ni ghi fo, ọre i na khama Nowanren Talib gh' ọtẹnmwẹn gha s' iwina rae. Ọre ọtẹnmwẹn na gele gben ebe s' iwina rae debac mwẹn gha do eki kugbe. Iren, i ghi serae vbe Sapele vb' Uhunmwun vamwẹn ni na gha die Edo. Eki n' ima gba gha do ni, ọre o ye do khian vbe Sapele do s' ede n' ere no ya fe b' owa, v' ikhuo, vio emọ y' esuku.

Eriọ vbe no vb' ogboleghan vbo Okigue vbe February 1920 vb' eghe ni na gha wina 'vba. Ikpede ehan orogbo ọre Oka-issueghan kevbe ozukpogie-va ya ro arokugbe oleghan ni r' ogba na tiere: Convict, unconvicted and discharged prisoners. Iran ma setin roere gba sokpan, vb' ede n' ogihinron, iran na do tiemwẹn ni do ru iyobo. Ugben vbi ghi suen gha ruce, ifuen-aro isen yan ogban i ya roro ehia fo fefefe. O ke ghi gba vbe na ho kevbe vbe no ye zee. Ọre iran na kp' obo me; iran na do ka ayon, 'ma na da. K' eghe ni kpao, iran ke gha rhie ogho kevbe uyi nokhuo-khua me.

I y' uwu ok'erhen ya sipi (ship) ohian n' ebo tiere Hides gie B. G. May vb' evboebo vbe November 1922.

Ugben vbi s' Edo vbi ye kakabo khuonmwini emianmwene ni, i ke gha mwen eko eva, deghe emianmwene ni gha fo, ra o gha gbemwene. Rhunmwund' oni igh eki-mwene, i na ya giegie b' owa vbe vbo y' Oweko. I ke ghi b' Owa ni vbe 1923 ya se 1924. Ugben vbi boe fo, i ma ye wu, rhunmwund' oni, i na rhie ekponmwene gie Osa : No na gumwene ye gha ro.

O ghi kpe fua kherhe, i ke vbe weriegbe sun emwin eki gha we vb' Edo. Osanobua ye vbe fian gbee, eki ni na gha khian esesemwense. I ghi we ukponesiliki, ukhionfo-esiliki, esada, n' ovbokhanmwene gumwene khien. I gha la ore, ugbenso, i khien ikpon ogban vb' ede. Ogie ukpon hia fefefe, esiliki, esada—'me tobomwene—i ghi mu gha lele urho domwand' ekhamwene ni hia khian. A mien ede eso n' eso d' oghe ikpon ugie d' oghe ikpon 'kesugie.

'Me o te ra ka b' owa y' ehe ne John Holt ghi b' owa yi na. 'Me, o ba te rhie oto ni na. Sokpan, ugben vbi ghi muegbe ni khian ya boe vbe 1925, edokpai ghi ghe, D.O. (Nowanren Nevins) ke ghi z' omwan bumwene w' iren no emwene-mwene, Ugben vbi ghi s' evba, ore o na nomwene were iren hon-en gha we, i gben oto vb' ehe okpa ni khian b' owa yi. Ore i na we emwanta no. Ore o na khamamwene ni kpao 'vba kevbe we, oto ni, ei re oghomwene, oghe Evboomwan no. Nowanren Evboomwan ke ghi re ozedu ere no wina lelee. 'Ren, o l' oto rhunmwunda, nene D.O., ei hoemwene o ba, ei hoemwene ovbiere levbasevba, akhara o ba, akhara ovbiere, 'me na khian. O ke ghi rhunmwund' oni niemwene oto ni mu n' Evboomwan.

Vbiyeke oni, i na weriegbe kpao gha rie Eguae ya mien omo. I na khama ren vbe n' emwin hia ghi de he were, ebo mienmwene oto mu n' Evboomwan levbasevba, Aduwaya vb' Uselu yemwene ni gha na b' owa. Ore o ba na rhunmwund' oni gie emwan lelemwene ya vba odionwere n' idunmwun oro na tiere Akhuemwentro no rhie oto me. Vb' odionwere kevbe eniwanren eso ni debare ghi rhie oto me ne, ugben vb' iran ni r' owa ghi re, iran ke gha ro we, u gha ghe, t' odionwere mu oto khien. Sokpan, o ke ghi sien we, omo z' emwan rhiemwene gha de n' iren rhie oto me vb' aduwaya. Iran ma yayi vbe no tae se, ede ghi gbe, iran hia na kpolo gha rie Eguae. Iran ghi s' ughozolua, ore omo na ladian vb' ugha n' arogun. Ugben vb' iran hia ghi tue fo ne,

vb' ọwarokpa ni, ọre ọmọ na nọ wẹ: 'Wa ma miẹn ovbokhan ni rhie gie uwa 'node n' uwa rhie otọ ne-ẹn? Aduwaya dandan wa na rhie otọ ne-ẹn; ọmwan 'siesi nọ. Deghe uwa renren gh' unu-ode ni a na koko mwẹn gh' ọghomwẹn nọ? Rhunmwund' ọni, i setin miẹn ọmwan olighi ni rhie gie uwa, ọmwan-si nọ gha g' uwa dolọ evbo yi nọ. 'Wa ghi y' obe-si muẹn oo. Ọre iran hia na tue, iran na gha rie owa. 1925, ọre i b' owa y' evba. Igho ẹki ni ni koko, ọre i ya boe.

Vb' ukpo 1926, i na do kie esobu y' evba vb' Uselu. Emwin-ẹki ni khiẹn ni viọ yọ, ẹi re avbie, ọ gbera ẹkpo eva, vb' ukhionmwẹn. Esobu ni na gha rọ rin-rhin-rin ya sẹ November 1927 n' oyi ya viọ emwin hia ni rọ. A gualọ otọ oyi ni l' ehe hia, a ma miẹn-ẹn. Avbe olakpa ke wẹ ni gbẹnẹ emwin ni wiri ni hia, i na gbẹnẹ chia fẹfẹ, iran na rhie hin. Sokpan, vb' okiekere, vbe n' iran fian ọrhe oyi ni sẹ, iran ma miẹn-ẹn.

Nai ghe tota ẹkan, i na ye gha gaga do ẹki ni khian. I ke ghi mwẹn ikeke eva, i na mu okpa khiẹn ya gha fi obo werie do ẹki. Sokpan, ẹki ma ghi khian ese vbe nọ ka ye; igbo ke ghi fo. I ke ghi rhunmwund' ọni la iwina ọvbehe. I na gha mu iwina n' ebo na tiere: "Contract" (Iwini-bowa). Vbiyeke vbi suẹn iwini-bowa na gha mu, Osa ke ghi rue me wẹ, ọghe okaro ni ka gha mu, i ke ghi miẹn ikpon iweva vb' ere debae ọvbehe kherhekherhe ni ghi gha ladian vbiyeke ọni.

Vbe September 1932, i ke ghi kpao bu Ohen W. J. Payne vbe C.M.S. mu ebe ni ka gha gbẹn—Edo i ya gbọn-ẹn—gie ghe (Ekherhe vb' Itan Edo). Ohen Payne ke ghi tie avbe emamwanmwin eso n' iran do ghere. Nowanren J. E. Edegbe r' usun emwan n' ohen tiere. Iran ke ghi kakabo tian Itan kevbe Edo na ze yọ wẹ, ọ wa ma esesemwense ghọ gha kakabo khiẹn vba gha gbọn-ẹn ladian. Rhunmwund' ọni, ọre ohen Payne na ghi miẹnmwẹn ere gbọn-ẹn ladian. Nene 'masini (Printing Press) na ya gbẹn ebe na, ere i de okiekie vb' obo C.M.S.

IWINA EMASINI EBE

ỌTOKHA ọre i khin. I te okha nibun ẹsẹsẹmwense ma emwan nibun vb' otota gbugbẹhia vbe 1930 do sẹ 1931. I vbe ta eso vbe vbọ ma ọsemwẹn Nọwanrẹn E. H. Marfleet ke October 1933 ya sẹ February 1934. Okha hia ni tama rẹn ke ghi rhiẹnrhiẹn ẹsẹsẹmwense sẹ vberio wẹ, ẹdọkpa, i na t' okha isẹn ma rẹn vb' osuru. Vbe n' okha ni rhiẹnrhiẹn-en yan ẹnrẹn unu-a sẹ hẹ, ọ na we ehe eti (tea) kevbe ayọn na da. Ọ na tie Orhunmwun eha ọvbehe bae egbe: ebo eva ni ke P.W.D. re kevbe ọkpa nọ ke Education office re. 'Ma na gha re, 'ma na gha da; ọre ọ na khama iran wi rẹn okha gbe kevbe wẹ, egbe okha vbenia, ọ ma ke na gie iran wi: ọ kere na gbẹn chia y' ebe fẹfẹfẹ kevbe wẹ, rhunmwunda mwẹn, 'rẹn na k' ihun na.

Rhunmwund' oni, mẹ vb' ọre na gba y' okhian kugbe ya mu efoto (photograph) vb' isoko Edo hia: 'Ma y' Use, Ego, Iguadolọ, Iguosodin-nẹbudin, Awẹnhen, Ekae, Eviẹkoi, kevbe ehe nibun ọvbehe hia n' ima miẹn efoto vio y' ebe. Nọwanrẹn Marfleet ke ghi khamamwẹn wẹ, ọ kere ni suẹn gha gbẹn okha hia fẹfẹfẹ y' otọ gh' iran i re na y' unu ta kua kẹkan. Ọre i na gele suẹn gha ru vberio. I ghi gbẹn nibun y' otọ nẹ, i na ya khama rẹn wẹ, obọ kẹ nẹ kevbe wẹ, i vbe dẹ Masini (printing press) na ya gbẹn ebe ọghe obọmwẹn. Marfleet ke ghi ghọghọ yọ ẹsẹsẹmwense wẹ, erio irẹn khare levbasevba, ọ ke ghi bumwẹn ude ni hẹko gha yaẹ wina khian kherhekherhe wẹ, ẹi mwẹn nẹ ghẹ de fio kevbe wẹ, efoto ni ima mu ni, a ghi vio eso yọ vbọ. Ọre i na gele y' emasini ni suẹn ebe na gbẹn.

Ke April 1 ukpo 1934 ni fo ni dẹ ẹmasini (printing press), i ke yaẹ gha gbẹn ukhukhu ebe hia fẹfẹfẹ vbe nia. Ebe ọghe (post card), ebe ikuoghe 'Christmas kevbe New Year', ebe ọghe

irhiḡha, ebe iwina ḡghe esuku, ebe ḡghe esosi, ebe ḡghe ḡsiosa, ebe ḡghe ubiḡmwḡn, ebe (receipt) ḡghe ḡki, ebe ḡghe igḡdu (timber), (certificate) kevbe (testimonial).

Ugben vbo ghi se 1935, i ke do yaḡe gben *Okha Edo* kevbe *Agbedogboyo* ne C.M.S. Bookshop no r' Edo deḡe gha khiḡn vbe bookshop ni r' ore Edo. K' ḡghe ni gha de, i ke suḡn gha yaḡe gbenḡ domwan d'ebe ughunghan na tie i te do la museum vbe 1946.

ISASEGBE IRUEMWIN

Vb' eghe omuhen gha de i ke gha mwen isasegbe nokhua gh' itan kevbe ere Edo. Evbibiemwen, emwan ni kakabo ren okha dinmwin esesemwense iran khin. Iran t' okha nibun mamwen esesemwense rhunmwunda, n' okha na rhiernhiemwen. Eri otenmwen (Uwangu Igichon) vbe t' enibun mamwen.

Vbi he y' esuku vbe 1914 vb' eghe na na gha ru emwin 'negbe Ovonramwen vb' Eweka rie oba kevbe na na y' okuo Ogiamwen, emwin hia fefefe na ru ke ghi rhie etin kevbe orhion me debae isasegbe no ka guemwen we, o ma ke n' emwin na ru ni hia wi hiehie. Evba i na suen gha gbene ebe hin kherhekherhe do se 1921 ni k' otogbo s' owa ya s' edogbo 1931. Vbe 1932, i ke ghi kokoe gbom-en ladian vb' emansini (printing press) ni de vb' obo C.M.S. okieke. Nene ebe *Ekherhe vb' Itan Edo* ke ghi ladian na khien vbe January 1933. O wa kakabo khien esesemwense vbe 1933 ni serio we, vbe 1934, a na weriegbe gboen ladian ukpogieva gha khien. Ukpo ni dandandan ina fiewerie gben y' ebo (*A Short History of Benin*). Vb' usun ebe ni gbene vb' eghe ni, 'me tobomwen ore o printi (print) *Okha Edo, Aigbedogboyo, Ebe Imina, Benin Law and Custom* kevbe *Concise Lives of the Famous Iyases of Benin* vb' vbikagbon iran vb' ofisi-mwen vb' Oweko.

Vb' ehe ni na gha gben ebe hia vba vb' ofisi-mwen, avbe ebo nibun hia do gha miemwen. Ugbenso, eso gha se Eguae, oba w' iran bumwen gha de ni rhie iran l' ore. I gele vbe rhie iran l' ore ya ma iran emwin-aro ra, ama hia ni gia ghe. Ya s' egbe emwine eso ni r' Eguae na rhie erunmwunyen ghe, 'me, o vbe rhie iran l' chia. Ebo gha s' oghomwen vb' Oweko, iran ghi rhomwen esesemwense y' iwina ni wina vba, ibiba Obo Hans

Melzian, ni rhie iyobo na vb eghe no na gha gben Dictionary Edo. Obo Melzian, rhomwen y' ebe no gben: *Nigeria Magazine* oghe 1937 vb' ipapa okpairo-vbiyeha. Ren o khare ekporio we, i gha he gben ebe nibun vb' ede gha rie. Vb'ase eneghe na, okpia ovbehe na tiere Marfleet na vbe re. Okpia na ke ghi mwen isasegbe ra, eko-ere ke ghi rhienrhien ghe-kpae emwin Edo nibun hia. O ke ghi khamamwen ni rhie iren khian lega oto Edo; i na gele rhiere l' igue eso. Ma y' Eviokoi, Ugo n'iyokorhionmwon, Urhonigbe, Okogo kevbe ehe ovbehe hia, ma ke weriegbe gha die Edo. Uzola okpa ma ya l' ehia fefefe. Uhi, Obo Melzian vbe lele ima y' enokhian gelegele k' ebo ovbehe Nowanren Tailor.

Vbe n Obo Melzian mwen iyayi se vb' egbemwen, edokpa ke do re, o ke ghi ye Education Committee no r'ore Edo. O ghi siko 'vba, o ghi gh' iran yo, gh iran re, ore o na no we: Egharevba vbo? Ore iran na wani, khama ren we, i r' okpa vb usun iran. Ohu ke ghi kakabo mwen yo esesemwense kha we: D' emwin no gha ze na gha na vio emwan ovbehe ya koko ogbe iko vbenia na s' Egharevba rae, ren no gben ebe ladian? O na khama Education Officer: gi-gi-gia mien we, ere a rhie eni me (Egharevba) y' oto bae iran ni; akhue, ni do debae iran sun. Ore ede ghi na gbe, i na gele ya sun. Me Oba vbe rhie y' akowe vb' Eguae no gbe emwin y' oto vb' oghe Iwebo vbo, rhunmwunda Iwebo 'ri khin. Ze vb' iwebo, me o mu ada n' oba Eweka II na tie avbe ebo hia kevbe akowe nikhua hia ni r' Edo y' Eguae y' evbare emwikpo kevbe ayon ghoto iran vbe January 1, 1933.

I vbe gha gbene iyen nibun y' ebe newspaper, vb' eghe ni. O ghi ze kpe, i na do gben iyen okpa ladian we, o kere na mu Museum gboto y' Edo rhunmwunda, ni r' Edo ekporio i re nibun, ibiba n' ebo vio kpao vb' eghe okuo-ebo vbe 1897 ra, kevbe we, o gha rhie iyobo negedegbe n' emwan hia vbekpae emwin-a re, ibiba igu-erommwon kevbe Igbesanmwan rhunmwund iwina iran. Niyen ni mu so ke ghi vuon arioba aro serio we, iran ke ghi de ebe na gbom-en yi vbiyeke vbiran tiere.

UHUNMWUN II

ALELE OBA KHIAN

Vb' ukpo 1921 gha de ore i ke gha lele oba (Akenzua II) khian vbo he r' omonorowa. Vbo ghi mien gh' uyinmwemmwem ma esesemwense, o ke ghi rinmwian mwem vbo khian kpao gha rie Abeokuta ya rue iwina arioba vbe December 1925 ni gha gbaro gh' owa iren, ibiaka iren. 'Nikpia k' enikhuo—kpataki, amwon-ren n odion (Aghahowa) kee k' ovbiere n' odion (Solomon) no r' omoo ukpo eva vb' ukhionmwem vb' eghe ni vbo hanmwan ovbiere n ukpogieva (Felix Osayande) no ghi re Magistrate na. Ebe no gbene re, k oko no hae gie amwon-ren, obomwem chia lao. O gha khian gie uhunmwun gie iyee vb Evbodobian vb' Iyekorhionmwon, obomwem o la s' ore obo; 'me o gie ibiaka're n' ikpia n' eten iyee. Eri o i gbaro wa gha gh' ibiaka're o te do s' owa vbe 1927.

Vb' eghe okpa, egbe ma rhan iyee—emianmwem ni da' re egbe —a na gie na tiere, sokpan, o sowa kherhe iyee na fi-ya vbe July 18, 1926. Ede no fi-ya ni, 'me oru emwanmwan emwan ya gha fi osisi (oweiwu) sokpan, erhae (Eweka II) na gie omwan gie ima n' ima d' obo osisi ni yi na tiemwem gie iren. Edaiken ke ye vbe no mu ohu. Ugben vbi ghi s' Eguae, ore oba na khamamwem we, si fi osisi n' ima d' obore yi kevbe we, ese n ese iren ru n ovb-iren na no ma ren rhunmwunda, o ma s' eghore ne, iyee ni, ci r' ere. O na gie na muen gha rhie Evbobotubu na ya suce go. Iran na gele ya ru vberio zee. Me (Egharevba) ore o vbe mwanmwan emwan ni yo. O ghi r' ikpede eva-yan-ugie vb' uki ni n'iyee wu, ore a na bie ovbiere n' okpia n' ukpogieva. A ghi ru ne, vbo gb' Uzola okpa, o na weriegbe gha rie Abeokuta vb' che no na rue emwin. O yo o re hen-neden. Erhae (oba) k' amwon-ren ni, k' ibiaka re ni kere ya s' egbe eten onren hia, t'

iran niyinmwèn noma ma onrèn vbọ re uhiẹn, s' egbe Ajari t'obore n' arowa're. Rhunmwund' uyinmwèn esi kevbe ekhọe esi ni ya yin lele ovbiere khian, omọ n' oba na kakabọ gha hoemwẹnmwèn esesemwense.

Vbe 1928, a ke ghi rhiere (Edaikẹn) ye nọ gbaro gh' isoko Iyeke-Uselu (district head) vb' Ekiadolọ. Rhunmwund' ukpo na rhiere yi i ke ghi gben ebe ladian ya rho Resident kevbe D.O. y' uyinmwèn esi n' iran yinrin.

Edaikẹn la Eguae vbe January 3, 1931. Mọ ke ghi laro vbọ r' ede gbe. Ede ihinron, ede ihinron, ore a gbe vbe vbọ na ya tuo eha. Uki ni, ore a vbe bie ovbiere n' ukpogieha (David) nọ ghi ru omugui (lawyer) na. O ghi se June vb' ukpo ni (1931), ore a na rhiere gha rie Eguae Edaikẹn vb' Uselu. Ede nọ kpao gha khian dandaan-dan, o na wẹ ni viọ ibieka're gha khian sokpan, i ke ghi gb' odan gh' emwèn ni khama onrèn wẹre Iwebo 'ri khin levbasevba, Iwebo i su ikhuo ra, iloi. Ren ke vbe wanien khamamwèn wẹre, 'ren renrèn sokpan, chia ore i ye n' iren. Rhunmwund' oni, i ke ghi gele kue yọ v' iran gha rie Uselu. Iran te do kpao vb' Uselu re, owa-mwèn a ke s' ame y' odo. Egbedin eva ore osoro rho yi na balo k' oghomwèn gh, oghee. Emwan kpataki gha k' uria re do mion-en k' Eko, Abeokuta, Ibadan, Ijebu-Ode—owa-mwèn ore o v' iran yi. 'Mẹ oro o vbe mu ogho erhunmwunyen y' iran egbe iran te kpao. Inugba nibun ore o nọ eso vbọ deghe ehe n' iren v' iran yi m' iran egbe. Iran vbe khama onrèn wẹre o wa ma esesemwense: o ye vbe n' iran r' owa iran. O s' od' iran eha ni kha vberio ma onrèn. Otẹn onrèn gh' Iyi Eweka, eghe nọ na k' Eko re, owamwèn ore o do rhiere yi o te vbe weriegbe kpao gha rie ehe nọ na wina. A kpa wẹ, erhae gh' Eweka ye to kherhe do s' ode 1935, o gha mwèn ese kpataki nọ gha ru mọ rhunmwund' ekhọe esi ni ya yin lele ovbiere.

April 5, 1933, ore Edaikẹn rie Oba (Akenzua II) lele erhae. Ehe nọ lae hia fefefe vb' eghe ni, ti lelee l' chia. Vbiyeke vbọ rie oba ne, vbe ni ka ru lelee, erio i ye gha ru lelee.

Ekhaemwèn hia ore o rhiere ogho rhiere uyi mọ rhunmwunda, n' oba na hoemwẹnmwèn. Sokpan, emwan eso vb' usun igbama ke gha kpokpomwèn kh' eko-mwèn rhunmwunda wẹre, 'mẹ o rhiere ude n' oba nọ ya ru emwin nọ ru hia. Vb' ase okpa, otu

Ogboka ke ghi z' orhunmwun eva (Osaze kevbe Edegebe)—iran wulo ne nia—do miemmwun. Iran ghi s' oghomwun, iran ke ghi khamamwun were otu ogboka wemwun do: ohevbaru, were ude ni rhie n' obo ya gha gu Edo khon ni ye gha rhie ne khian ese. O ke ghi yanmwun unu-a rhunmwunda, i ma ren ere. Sokpan, i ke ghi sien were, i ma rhie ude-dan n' obo ra we deghe i kue d' obo ru vberio, ude-si i gha rhie ne-en n' obo ya gha ma, n' evbo ya gha ma ne-en. Ei r' omwan vb' ime o gha rhie ude n' obo ro ya gha kpokpo evbo levbasevba, obo i re ere omwan rhunmwunda, ei r' omwan na ya gha tama—no ru ona ra, oni. I na khama iran n' iran khama otu ni ne ghe ro ebamiro ghemwen hie hie rhunmwunda, i r' ose no mu ke. i r' oghian 'noma le; i gu obo dia ni ya rhiae evbo, sokpan, n' obo dololo evbo yi, n' evbo gha ma, ore a na m' obo. I ghi gu iran guan ne, iran na kpao. Ede ovrbehe ghi vbe re, iran na vbe z' emwan ni weriegbe bumwun do wemwun ohevbaru'. Eghe na ke gha r' eghe imuaemwun igho ameh. Ore i na waniem we, 'ohevbaru' n' iran do gha tuemwun 're na, i ma ren isi ere rhunmwunda, i ma bu obo ude a ma we a tuemwun 'ohevbaru'; levbasevba, ei r' obo o fian y' igho ameh, ebo no. Deghe obo ghi rhie obo y' ebe o ma khama iran ne' ebo fian y' igho ameh, de n' ime ren vbo? I na we, ededemwende, i mwun obo vbo n' omwan rokpa ghe bae-mwun ohoghei na ghe kpokpomwun baemwun emwin ni ma ren obo're, ren owore. Vb' eghe na na gha gu ezọ ighoame na, uwuere ni obo na mu egie Obakhavbaye gumwun vb' owa vbe 27 October, 1938. Baemwun egie n' obo mu gumwun, ogen na weriegbe ven were.—ghe nia, ghe n' iran khare. A te do gu ezọ igho ameh kevbe uhi ogbon oghe ibowa fo, iran ma ye yayi ghe r' ime o rhie ude n' obo do s' eghe ni na gha gben ebe ladian vbe Museum ibiba, eghe ni na gben *Benin Law and Custom* kevbe *Concise Lives of the Famous Iyases of Benin* ladian. Iran ghi t' iran, avbe unu ni ta yo hia na gha ta weriegbe. Iran na we, erio omwan na ye! Erha me! Iran na gha rinmwian Osanobua no y' orukho iran b' iran were, omwan esiesi 'ri khin: i gha setin dololo obo dololo evbo yi. Rhunmwund' oni, vb' okieke, iran na gha y' ohe gumwun vb' ofisi mwun 'vba. Ugbenso, a l'ede ikpon isele iweva, isele igbe, isele isen uhien isele eva vbe n' obo iran gbaie ni ya ka ayon da. O ke ghi kpae agbor hia odin we, omwan no sike obo se

vbemwẹn setin ye gha t' emwanta. Iran na ghi do gha fan-no unu wẹre, ehimwẹn o sumwẹn rhunmwunda, iran l' ode hia na ya mumwẹn fi eghan, iran ma setin, iran na wẹ ta gha lere gbemwẹn, Osanobua ma y' obọ yọ. Ehia fẹfẹfe na ghi fi ekhoe -dan iran werie do gumwẹn z' ose. Ona ke ghi ye vbe ere n' Edo zẹ wẹ, emwin nọ gbomwan gha de, emwin nọ sinmwin omwan ghi lelee. Aranmwẹn nei mwẹn erhunrhummwun, Osanobua ore o khu ikian ne-en. Osanobua ke ghi sinwinmwẹn vb' obọ iran hia. Erhamwẹn kevbe iyemwẹn, oba iran gae; oba 'me vbe ga kevbe wẹ, obomwẹn ke ghi k' ukhunmwun n' emwan ni hia, i na rie ase iran.

I lele oba (Akenzua II) ye iko oba hia vb' Oyo vbe March 29 ya se 3 April, 1937. Agbon hia y' oghogho s' oyaya muen vbo s' odo, mu ogho y' ore egbe. Vb' ede n' ima s' evba, oba ke ghi y' uhi, wẹ 'ma ni lelee gha khian n' ima ghe ladian y' ore. O ghi s' ikpede n' okaro vbe April, ore i na buere ya rhie ase vb' obore wẹ, i setin rie evbo i ma mien ehe eso kpataki ni ro. Ore oba na wẹ, emwanta nọ sokpan, deghe ima y' ore, n' ima ghe van owa omwan rokpa. Me, Lawal Osula kevbe Jimoh Ibrahim na kpao gha rie Eguae Alafin. 'Ma ghi k'evba kpao, 'ma na gbera gha rie St. Andrews College. Ugben vb' ima s' evba, 'ma na do vbae oba eva vb' evba. O ma vbe kpe hiehie, oba eva ovbehe na vbe do vbae ima 'vba. Rhunmwund' oni, ore i na gięgię weriegbe bu oba gha die ehe n' ima dia ya khama onren wẹ, o kere nọ ye St. Andrews College rhunmwunda, usi oghẹe gha se oghẹe oba hia ni re deghe o yo. Owarokpa ni, o na mu egbe, ma na gba gha khian. O ghi s' evba, Okaemamwanmwin kevbe emamwanwin na y' oghogho mion-ren yi. Iran ke ghi rhiere lele donmwand' ugha vbe College ni hia fo. Ore omọ na nọ iran ukpo na mu College ni gbọ, iran na wẹ 1897 nọ; ima na weriegbe gha rie owa agben vbo gben eni y' otọ vb' ebe orhiovbe. 'Ma ghi s' owa, o na rhomwẹn ma iruangbe ni kere wẹ, i fuero gbe kevbe wẹ, i ren uyi esi kpataki nọ ke n' ogie. 'Ma te yo, 'ma te re, emwan kpataki ni s' ehe n' oba dia do mion-ren aro, 'me kevbe Obasohan (Og'olakpa) ore o rhie iran s' odaro ere.

Vb' eghe na na gu ezọ ame, Edo ni r' Akure na re do mien oba aro. Ekhen vb' odo ni na gie ukode re. Emwan na na ya dia ehe eso ya. oba ma mien iran aro. A ghi ru rin-rhin-rin, oba na

gie uhunmwun khama iran n' iran do miẹnmwẹn kevbe wẹ, ni vbe gha tuẹ y' iran. Iran na do tota y' oghomwẹn. Ọ ke ghi kha wẹ, a te gu ẹzọ ni fo, 'rẹn i ma ho n' iran dia ehe ọvbehe ya sokpẹn oghomwẹn. Oghomwẹn iran dia, 'mẹ ọ vbe mu ogho y' iran egbe iran te kpao.

I ke ghi r' ọkpa vb' emwan okaro n' ọba (Akenzua II) tiere ni guẹ z' iro na mu iko agbaziro—iguobaziro (Standing Council) gbọ vbe 1941. Vb' ẹzọ uhi ibowa ogbon fo.

Vb' omuhẹn (January) ukpo 1955, ọba ke gha ru emwin ọkpa kpataki vbe Eguae. Ọ ke ghi rhunmwund' oni tie avbe Ekhaemwẹn kevbe emwan kpataki ni r' ore ya s' egbe ukọ ogienebo (Administrative Officers) k' avbe ohẹn. Okao ohẹn Oyebođe kevbe efada eso (Rev. Fathers) vb' Ọkhaemwẹn Gaius Ọbaseki, iran gba lao owa evba kugbe uhukpa. Eni ke ya tuẹ ọba sokpan, Ọkhaemwẹn Ọbaseki na ya tota, ọ ma tuọe. Rhunmwund' oni, egbe hia fẹfẹfẹ na gha gięngięn mwẹn wẹ, vbọ zẹ n' oko na ma na tuẹ ọba? A te do kpao vb' iko ni re, ẹko ma weriegbe rhięnrhięnmwẹn. Vb' ọwarokpa vb' iko ghi vẹ nẹ, ọre i na buere gha rie owa ya nọ-rẹn emwin nọ zẹ nọ ma na tuẹ ọba. Ọ ke gha ho nọ sa yomwẹn unu w' iren tuọe sokpan, i ma miẹn-re vb' obọ. Evba i na weriegbe nana ma onrẹn inu emwan ni tuọe vb' eghe n' iren na gbera ya tota kẹkan. Ọre i na khama onrẹn wẹ, ai fe d' iyi. I na wẹ, omwan k' omwan: ọ r' ovbiogue nọ, ọ r' odanfẹn nọ, ọ ma rhie ogho y' ogie nọ r' evbo ẹre egbe, ọ d' iyi osa levbasevba, egbere kevbe evbo ẹre ọre ọ mu tilara kpozuaa. I na w' emwin vberio ma ke hiehie nẹ ghe weriegbe ghi danmwon-ẹn ede ọvbehe. Uwuere ni, ọ ke ghi hunmwun suun kpomwẹnmwẹn vbenia wẹ: Thank you, Chief Egharevba. Ọ ke ghi miẹn kue wẹ, 'rẹn ghi weriegbe ru vberio ede ọvbehe. I ghi kpao vba kherhe, emwan eso na ya tuọe debae Nowanrẹn Olotu nọ r' ode Ikpoba. Ọre ọ na khama iran wẹ: Banban ba Chief Egharevba kpao 'mwan; to do gumwẹn gi ẹzọ wẹ, i ma tuẹ ọba vb' Eguae. Ọ na khama iran vbe ni guẹe gui he kevbe vbe n' ẹzọ ni vuon iran aro he. Ọ wẹ, ẹzọ ni gu iren gui ni rhie ma iren gh' omwan emwanta i khin kevbe wẹ, omwan vbemwẹn gha gba s' ehan vb' evbo, Edo na gha ma s' ayọ. Ọ na nerhunmwun mẹ. Ugben vbọ ghi s' omwan usen vb' chia, uwu emwan nọ tama (Nowanren Olotu) na do khamamwẹn vbe n' ẹzọ ni vuon-rẹn aro he.

Vbe Obo Dike rie Edo do miennwẹn vbekpae itan Edo nọ w' iren khian gbẹn ẹkporiọ vbe 1956 wẹ, me ọre ọ khian su iran, ti vbe rhiere s' ehe n' ọba ye nọ ya guẹe guan. Ore ọba na khama onren wẹ, ẹko wa kakabo rhiennhiẹn iren vb' iren hon-ẹn wẹre ime ọ ra su iran. O na wẹ rhunmwunda, i ren itan Edo s' omwan k' omwan gbe. O we vb' igiemwin, Iwebo, Iweguae kevbe Ibiwe, ugha ughunghan iran khin rhunmwunda, omwan nọ r' Iwebo i ren emwin na ru vb' Iweguae ra, Ibiwe: emwin na ru vb' Iweguae ra, Ibiwe, emwan ni r' Iwebo ren iran. Sokpan, emwan ni re donmwand' ugha, iran ren vba ru vbe vbo. O wẹ, sokpan, rhunmwund' ifuero kevbe isasegbemwẹn, ti ren vba ru vbe hia fefefe; ni ma ren i ro hiehie.

I te do de gb' otọ gha khuonmwın na, ose ni mwẹn vb' otọ agbon, iran i r' avbie. Emwan nifua k' emwan nekhwi, iran bun gbe. Iran gha s' oghomwẹn do tuemwẹn, kpataki vb' iran ore i su s' ehe n' ọba ye: iran vbe rhie ude esiesi ne-ẹn. Eriọ omọ n' ọba vbe ye, eso ni vbe do tuọe, nibun vbe vbo, ọ vbe s' oghomwẹn.

Ohe ore i ya tuẹ y'orhonmwungborie emwan ni tuẹ yi vb' obo ọba. I miẹn iran emwin rokpa rhunmwunda, i wina, i miẹn gha re, i miẹn gha da, i miẹn ya gha ru ese n' emwan Iovbehe. I ghe omwan k' omwan hiehie obo, rhunmwunda, i ma ho ni ru emwin efa ra oya vb' ehe k' ehe ra, eghe k' eghe. Rhunmwund' oni, cten kevbe ibieka ọba hia ke ghi hoemwẹnmwẹn esesemwẹnse rhie ogho kevbe uyi me gbugbehia. Oba tobore ke vbe gha t' emwẹnmwẹn esiesi khian.

Vbe April 1936, ore omọ n' ọba (Akenzua) te khian ka mu ogie me sokpan i ke ghi kponmwon-ẹn esesemwẹnse khama nnren vb' eghe ni wẹ, deghe i ric egie, i ma yayi gh' iwina ebe ei gbẹn (printing press) gha ye ma; ọ gha d' obo yi rhunmwunda, i khian miẹn omwan ovbehe ni gha rhie yo nọ gha wina-ẹn ze vbe ni wina-ẹn kevbe wẹ, iran ni r' ore hia, iran ta huun-hu-huun wẹre emwan ni r' ikotu (iko) a khian v' iran kua lavbasevba nene ikotu (iko) u khian rhiemwẹn yi. Ore i na khama omọ nọ giẹe sike odaro ne, ọ na w' iren hon-ẹn ọ te do se 1938 nọ ghi mu egie me.

ARIỌBA ỌGBAKHA

IKE ghi r' ọkpa vb' uwu emwan ehan n' Edo hia zẹ nọ gbẹn ebe emwanmwan ariọba-ọgbakha: ọghe Ward, ọghe iko ore Edo, ọghe ikotu (iko), kevbe iko-ọgbakha. I miẹn ebe na ya zemwẹn ọwarọkpa ni, i ke ghi bu ọba ya khama ọnrẹn. Ọba ke ghi khamamwẹn wẹ, i sẹtin deba iran wina rhunmwunda, rẹn mu ẹtin yan-mwẹn rhunmwunda, ọmwan k' ọmwan ra, ọmwan rọkpa i khian sẹtin fi unu gie irẹn n' ọba vb' ehe ni ye. A ke ghi ru emwanmwan ni ke 1938 do sẹ 1939.

Vbe 1939 ni, vb' emwanmwan ọkpa ni, Governor ke ghi yi iyi ne dọnmwand 'ugha ehe (Iwebo, Iwẹguae, kevbe Ibiwe) z' imuakpa ra, emwan-gbiran gha ye iko-ọgbakha kevbe iko-or Edo kevbe ni kẹre. Rin-rhin, a ma miẹn ni z' ọghe iran. Ọ ghi kpe, ekhọe mwẹn na gha gumwẹn z' iro wẹ, emwin na ma zẹde ke hiehie. Emwẹn na ke gha gumwẹn khon vb' uwu ẹko gbugbe-hia. Sokpan, ọre ọ ghi na s' ẹdokpa, i na do tie iko iriegie ukpo n' ogieva kevbe n' ogieha y' owa mwẹn vb' Oweko. I ke ghi khama iran wẹ, emwan na wẹ na zẹ a ma z' iran kevbe wẹ, ọ kere na z' iran n' ima ghe mu uyi kevbe ẹkpen egbe ima fua ra, n' ima ghe khie ni ma rẹn ya ru, ke ni ma rẹn ya kha ra, ni ma rẹn 'negbe. I ke ghi nian-nian-ẹn ma iran wẹ, ọni ma de kaẹn ọba rhunmwunda, otu a wẹ nọ z' emwan levbasevba, deghe a ma ru vberio, t'ima mu uyi kevbe ẹkpen egbe ima fua. Ugben vba ghi z' iro yan ọnrẹn kherhe, iran hia na y' ekhọe ọkpa deba-emwẹn ghọ kere na gele z' emwan ni. Ede n' ogieva, ima na tie iko otiegba ọghe Iwebo hia n' ima na gele z' emwan ni. Emwan n' ima zẹ ọre: Okundaye n' Uwague, Osayi n' Eribo, Idacho n' Ovienrieoba kevbe Idehen n' Ihaza. Zẹ vb' akowe Iwebo, i ke gbẹn emwin ni hia fẹfẹ y' ebe. Iko ghi wẹ, i na rhie ebe gha

rie owa. I na gha khe eghe n' otu n' eva (Iweguae kevbe Ibiwe) gha ya z' oghe iran. I ghi ze khe, i ma hon a so, i ma hon a rhiere. Vb' omwan egogo igbe vb' owie edokpa, otenmwen okpa Okhaemwen Ozo Igbinoba n' Obarisiuwa no r' Ukpasia ke do tuemwen vb' owa mwen vb' Oweko. O ghi ze kpe, i na heko lao ughugha, ebe na ya z' emwan ni, i na rhie y' omọ utalawe. I ke ghi rinmwian otenmwen ni no laho no sumwen gha rie 'Post Office'. O ke ghi gele kue yo, o na sumwen gha khian.

'Ma ghi kpao vbe 'Post Office' re, i ke ghi khama onren n' ima zegiegie van oghe D.O. 'Ma ghi s' oghe D.O. 'i na fi obo y' ekpo, i na rhie ebe ni ne D.O. D.O. ghi tiere, o na kakabo ghogho yo esesemwense we, o ma. O ke ghi khama ima n' ima gha rie owa. 'Ma ghi kpao 'vba, 'ma na gbera gha rie Eguae. I ke ya khama oba were ebe n' Iwebo ya z' emwan iran, i rhie gie D.O. Sokpan, oba ke ghi khamamwen we, i te ra khirice gbe: vbọ ze ni ma na gia tie otiegba oghe iko Iwebo. I ke ghi khama onren gh' ima tie otiegba z' emwan o s' uki okpa gha de. I na fi ce ma onren gho sun gbe vb' oto kevbe we, ewaen gha sun gbe vb' oto, a ghi rhie etin kherhe buere. A renren gh' ewaen o s' etin sokpan, ewaen kherhe, etin kherhe kevbe udinmwen kherhe ore a ya ru emwin l' uro kevbe we, ore okakuo ya khon mien oto vb' okuo. 'Ma ghi k' Eguae kpac, 'ma na weriegbe gha die owa-mwen vb' Oweko.

Vb' ede n' ogieva, D.O. (Nowanren Cook) ke ghi tie iko: Oba, Iwebo, Iweguae kevbe Ibiwe y' iko vb' egedege no r' Eguae ni (Council Hall). A te suen, D.O. na w' iren tue oba, iren tue Iwebo, ren tue Iweguae kevbe Ibiwe. O na we vb' eghe okpa—o s' uki ehan ne—Governor ke ghi yi iyi we ne donmwand' ugha z' imuakpa ra, emwan-gbiran gha rie iko (iko-ogbakha, iko-or' Edo kevbe ovbehe hia). K' eghe ni gha de, owe, 'ren i ma mien ni z' oghe iran. Sokpan, 'node na, ren ke mien oghe Iwebo vb' emwan eso rhie ebe gie iren n' iran ya z' emwan iran. O ke ghi gbee wani en ma iko hia were, iren ma he ye y' ebe ni yi nia sokpen iran tobọ iran ladian kha were iran o gele z' emwan ni. Ore i na ladian, i ke ghi k' aro, ore otu ne yi iyi ni na bi lelemwen vb' iyeke. Ore i na khama D.O. we, ima n' Iwebo, ore o z' emwan ni (Uwague, Eribo, Ovi enrioba kevbe Ihaza). Ore D.O. na no iran nikere deghe vbe ni khare, iran vbe kha. Iran hia na

wẹ: ẹn. Rhunmwund ọni, ọ ke ghi kakabọ tuẹ Iwebo yo ẹsẹmwenkha kha wẹ: ẹmwanta, . . . A gele wẹ, otu ọdion wa khin kevbe wẹ, wa gele ru emwin ọdion y' ime kevbe Ọba aro kpataki n' uwa na mu ẹmwẹn Governor sẹ. Ọ na nọ Iweguae kevbe Ibiwe n' iran viọ emwan iran ladian. Iran na y' obọ gb' obọ. Rhunmwund' ọni, ọ ke ghi sa ẹzọ-a gha gui sienrenren, vbọ zẹ n' iran ma na ru vbe n' Iwebo ru? Ọ na khama iran n' iran gha rie ugha n' iran ya z' emwan iran re gięgię w' iren rhie ifuan-ro ọgban n'iran kevbe wẹ, 'ren, ọba kevbe Iwebo gha dia khẹ iran. Ọre iran na gha khian ya ru vberio. D.O. ke ghi kakabọ rhomwen ẹsẹmwenkha katekate ni na gie Iwebo mu ẹmwẹn Governor sẹ. Ọkhaemwen Gaius Ọbaseki nọ z' edu ne D.O. ke vbe rhomwen ẹsẹmwenkha y' iwina esi ni wina-ẹn n' ẹvbo vb' iko ghi vẹ nẹ. Uki ni dandaandan, ọre iran suẹn iko gha yo.

Ọ kere n' emwan hia ren iwina esi ni wina-ẹn, rhunmwunda, 'mẹ, ọ zẹ gh' otu n' eha ni sẹtin gha z' emwan y' ikokeghe ni gha de do si ikpede n' ẹrẹ. Eriọ ariọba-ọgbakha ya hẹko suẹn vb' Edo, ọ te do suẹn vb' otọ Nigeria hia.

'Mẹ ọkpa ọrẹ ọ koko igbo iyobọ ọghe: Alefe (War Relief Fund) igbo Akhọn-miotọ (Win the War Fund) kevbe ọghe Ikhegbe (Saving Certificate) vb' obọ emwan n' Iwebo hia.

EGHE VB' USELU

UKPO 1925 ọre i b' owa-mwẹn nọ r' Uselu na. I ke ghi si larọ vbe March, 1926. Ke June 1926 ni kpao, i ke ghi dele A.B.C. n' ibieka ni r' idunmwun ni ye. I ke vbe gha y' ukpamwẹn ma iran emwin ason, ason, vb' owa-mwẹn n' iran miẹn ehe na ren emwin kevbe we, n' Uselu miẹn ehe na gua kpao s' ayọ. 1926 ni, ọre i vbe kie esobu gha khiẹn emwin ate hia mwan.

Vbe 1929, August 20, i ke ghi gbẹn ebel' obọ Oba (Eweka II) gie B.N.A. n' iran y' uhoros amẹ-ogba gha die Uselu rhunmwunda, amẹir' eran hiehie kevbe we, na na k' emwan ya gha s' amẹ vb' Ikpoba, ọ re gbe; levbasevba, na vbe gha k' emwan viọ emwan ye 'Council' n' iran vbe gha do iko, na vbe kie ode uwaya n' agbon hia gha b' owa yọ kevbe na vbe gha lae. Ebemwẹn ni, iran tae vbe 'Council' a ke yae ru emwin vbe y' obọ yọ. Ugben vbọ ghi se January, 1930, iran ke ghi ze A.D.O. kevbe Edaiken gha de n' iran do waen owa ni r' uselu hia fefefe. Iran na ka s' oghomwẹn, i na lele iran kpao ya waen chia fefefe. Iran ghi vbe weriegbe rie owa, iran ke ghi van oghomwẹn, iran na kp' obọ, iran ke gha rie. O ghi se 1931, iran na gele suen Iwina amẹ-ogba ni si amẹ gha die Uselu vbe February, 1932.

Vb' Eguae iyoba vb' Uselu, donmwand' odionwere ọre re donmwand' idunmwun. Vbe n' iyoba ya re lele gbe, erio iran ze lele gbe. Sokpan, ọ ghi kpe fua, ọ ke ghi lighi y' iran aro, iran ma ghi ren nọ ka ze ra, nọ k' iyeke ze. O ghi se 1930, iran ke ghi rhunmwund' oni gha ri' Eguae ya miẹn omọ n' oba bare. Iran ghi s' Eguae, oba na we n' iran bu lhogbe. Iran ghi s' lhogbe, lhogbe na we n' iran bumwẹn gh' ime ọ ghi ron-ren se rhunmwunda, iran ghi khian setin ren eni iyoba hia vb' erherhe, were i gb' iran y' ebe. Ore iran na weriegbe ya khama oba vbe n'

Ihogbe kha he. Oba na we, emwanta no, t' iren te miannian, ghi gele wa ren chia fefefe. O ghi s' edokpa iran na do tiemwen ni do gu iran tae vbe n' edionwere ya ze he vb' Uselu. I te kpao vb' owa gha khian, i na vio ebe eso mwen. I te s' evba, iko na gba kankaankan vb' oghe Odionwere n' idunmwun Oro. Iran na do khamamwen emwin n' iran tiemwen bae were, vbe n' iran ka ya ze de yi, ei re 'rioghi ye nia: to ghi lighi rhunmwund' oni, omwan no ren itan Edo vbe n' ime ye, ore iran gualo no khama iran vbe n' iyoba hia ya re lele egbe he; rhunmwunda, vbe n' iran ya re lele egbe, erio, donmwand' odionwere ya ze lele egbe. Ore i na mu ebe ladian, ore i na suen gha tiere. I na tie. Idia n' iye Esigie, Elaba n' iye Orhogba, Emelu n' iye Ehegbuda, Ohogha n' Ayen n' iye Ohuan—kevbo vbehe hia. I na gha tiere kihan rin-rhin-rin osegb' osegbe vbe n' iran ya re lele egbe o te do ts oo. Iran na we tii-ii vbi tiere fo; iran na we emwanta no. Sokpan, okpia okpa na tiere Ighodaro na we, vbo ze ni na s' idunmwun ni na rhie okhuo (Eguae Ohogha) k' oto? Ore i na waniwen were, i ma ee sk' oto sokpan, ehe no na ze, i na tiere ladian levbasevba, na mien emwanta no r' uwuere a tiemwen ba kevbe we, emwanta no ro, ore i tae. Ore iko hia na we emwanta i tae ni ghe ze y' ore; iko na ve. 'Me kevbe Oviawe Asokiti (Odionwere n' idunmwun Ore) o ka suen gha koko ra, no igho uhunmwun vb' ukpo 1931 do se 1932 vb' Uselu.

Vb' ukpo 1933, I ke ya gu Ohen Payne, z' iro were na do mu owa ugamwen (esosi) y' Uselu. A ke ghi tae vb' iko agbaziroy' oboyo. 'Ma ke ghi bu oba, o na lele ima ('me, Ohen Payne, Ohen, Asekun kevbe Ighodaro Ihanire) do ghe ehe na gha muen yi vb' Uselu. A te suen gha boe, iran ke ghi mu me ni boe; 'me ke vbe mu n' obowa, vbe ni na gha gbaro ghere. A te do ho eken b' owa ni fo, 'me okpa gha r' chia ye. Deghe iran ma rere rhie igho re, i ghi y' igho obomwen ha-osa iran te rhie re. Erio i rue gha khian rin-rhin-rin, a te do boe fo kan onren. December 8, 1934, ore a kiere suen ugamwen gha ru vbo. January 1935, ore a kie esuku no ro. Ugben vbi ghi mien were ei khian ese, i ke ghi gu Ohen Payne z' iro na do mu esuku ason bare. Avbe emaemwanmwin na vio yo, 'me o vbe gha gbaro gh' iran kevbe we, i vbe gu iran gha ma emwan ni hia emwin. 'Me o vbe danmwun iran vbo gha s' eghe. Y' owara ukpo 1936 rin-rhin-rin

do sẹ 1937, ọre i ya wina-ẹn rhunmwunda, n' igbama ni lae ni y' esuku miẹn ehe na rẹn emwin n' Uselu miẹn ehe na gua kpao. Vbe ni wina iwina na sẹ, i ma miẹn igbo vbe vbo.

Vbe 1940, amẹ ke gha vbee vb' Uselu, a ma ghi miẹn amẹ sa, Ikpoba a ghi vbe gha weriegbe yo: ọgba ke ghi khui. I ke ghi bu D.O. ya khama ọnrẹn na dọlọe yi. Sokpan, ọ ma vbe kpe hie s' od' uki ehan, ọ na vbe weriegbe khui. I na do gbọn-ẹn ladian vbe 'newspaper' n' amẹ gha rie Uselu, ọre iran na do gięgię dọlọe yi vbiyeke vb' iran tie iyẹn ni vb' ebe, ọgba na vbe weriegbe suẹn gha re. Nene emwẹn ni gbẹn ye 'newspaper' na khin, zẹ vbe ni gbọn-ẹn vb' ebo.

I gbẹn iyẹn ni bun esesemwense ladian vbe 1941. I gbẹn ọkpa ya sinmwin oseghe Edo vb' obo Agbo vbe 'newspaper' na tiere 'Observer', i ke vbe rie ase vbo. I vbe gbẹn ọvbehe ya sinmwin oseghe Ife vb' obo Oyo. Oni wo esesemwense, ei re na ta. Ovbi-edo ọkpa (Lawal Osula) ka gbẹn, sokpan, Nowanrẹn Macaulay nọ r' Eko na gbẹn yaẹn ọghee riore unu yae khin otọ nọ gb' evbi. Rhunmwund' oni, ọre i na do gbẹn ọghomwẹn. I ghi gbọn-ẹn, i na do rhan otọ emwin hia fefefe vbe n' Ife ye he k' otọ gha de: Ife ọre ọdion, t' Oyo khian fure rhunmwunda, ọmọi setin kha wẹ —gh' irẹn sẹ erhae. I gbọn-ẹn, i na rie ase vb' iyeke're; ọ na ye vbe na s' amẹ dọ erhẹn yo.

Rhunmwund' oseghe ni sinmwin n' Edo vb' obo Agbo ni na y' iran aro khin iyeke kha wẹre, Agbo i mwẹn ekpen egbe're, ototo Edo o ye kevbe wẹ, ọba, o rhie ogie Agbo y' evba, ore Okhaemwen Gaius Obaseki na tie iko ahan-noze ivbi-edo ya mu ọgho yomwẹn egbe. Iko suẹn-rẹn vb' ọwarokpa ni, o na khama iran wẹre, 'rẹn ọ tie iran rhunmwunda, 'rẹn rẹn emwin n' iran khin n' evbo ọre ọ zẹ n' irẹn na t' iran katekate 'mẹ rhunmwund' iwina ni he wina n' Edo vbekpae iyẹn ni gbẹn n' oriefua rokpa i ye hiehe. Ọ ke ghi tue iran hia esesemwense, ọ na tota. Ugben vba ghi re da ne, Okhaemwẹn Obaseki na tie Ohen E. E. Ohuoba ladian no do t' unian emwan ni rie evba. Ọ ghi s' ehe ni ye vbo tae de ọsegb'osegbe, ọ na do ta vbe ni y' esuku he vbe St Matthew vb' obo iran kevbe vbe ni rẹn emwin he. Vbiyeke oni, iko na ve, agbon hia na gha rie owa.

Eghe okpa vb' ore Edo, odafen vb' eyon gha y' iko, uki gha gba, isele ihinron vb' esisi kekan ore ọ miẹn. Agbon hia rẹnren

wẹ, isele ihinron vb' esisi i mwẹn he nọ sẹ vb' ẹdẹ a ma wẹ okpia nọ mwẹn ikhuo mwẹn emọ nọ gha miẹn oni vb' uki wina iwina akuo-kan. Ore i na rhie ukeke, i na gbẹn yaẹn onrẹn vbiyeke vbi miẹn w' igbo r' aza esesemwense ghe t' arioba mu emwan ru. Vbe D.O. miẹn ebe ni gbẹn ni vb' ọwarokpa, ọ te mwẹnmwẹn vbe nọ sọn-nọ-ẹn sẹ. Ọ na rhie iyẹn ni gha rie ikotu (iko) ya nọ ototo ọmwan nọ gbọn-ẹn vb' obo avbe akowe. Sokpan, avbe akowe ke ghi siẹn wẹrẹ, ẹi r' iran gbọn-ẹn. Vbiyeke oni, ore eva vb' iran na bumwun gha die owa do nọmwẹn. Vb' ẹghẹ ni, i ke ghi r' akhie. Ọvbokhanmwẹn na tiere Ọmọzuwa ke ghi fi-ya. Ugbẹn vb' iran ghi gumwẹn guan nẹ, ore i na w' iran khama D.O. wẹrẹ, vb' usun emwan ni do iko, ni rẹn ebe rọ. Ore iran na kpao ya khama D.O. vberio, ore D.O. na wẹ, ẹi khian gha r' ohoghoi: eni setin gbọn-ẹn. Ore ọ na ghi s' iran rae sokpan, ọ na bu iran ude n' iran ghe ghi y' ebe iko fi alase ra, n' iran gha mu iran ma avbe emwan ni do iko n' eni ghe miẹn ehe na rẹn oro emwin nọ khian vb' iko. Sokpan, ebe nọ kemwẹn ya gbẹn ni, a ke ghi y' obo yọ yaẹn ru emwin, vb' okieke.

Ọghẹrẹ ra Oni Aderemi nọ r' Ifẹ ke ghi rhomwẹn esesemwense vb' ẹghẹ n' avbe oba hia na rie Edo do ko vbe 1942, rhunmwund' iyẹn oseghe ni gbẹn n' Ife. Ọ ke ghi kha wẹrẹ 'nebe ni gbẹn ni, 'irẹn rhiere ye 'Library' Ifẹ kevbe wẹ, ọ gha s' ẹghẹ, iran gha gie na tiemwẹn ni do deba Ohẹn Cole n' Oka emamwanmwun ọghe Ododua College Ifẹ gb' itan Ife: I ghi y' Ife vbiyeke oni, iran ke ghi y' oghogho mienmwẹn yi. Iran hia ke ghi somwẹn obo nerhunmwun mẹ rhiemwẹn l' ehe hia fẹfẹ vb' Ile-Ife.

Vbe 1948, i na gbẹn ebe gie Authority (B.N.A.) na do mu ikpekpẹ y' Uselu rhunmwunda, Uselu re gbe deghe ta kẹe mu orinmwun gha rie uhunmwun idunmwun (East Circular), Ebemwẹn ni, Osanobua ke ghi rhie ase yọ rhunmwunda wẹrẹ, a tiere 'nẹghedẹnẹ ni gbọn-ẹn, iran na gie A.D.O. (Nowanren Toht) bumwẹn gha de kẹe ke 'Surveyor' ọkpa. Iran ghi s' ọghomwẹn, 'ma hia na koko kpao gha l' oha hia khian vb' edogbo na, ehe nọ kere na gha mu ite yi. 'Ma ghi l' ehia fo nẹ, ore ima na do ze ehe na ghi muẹn yi na. Ebe ni gbẹn gie Authority vbekpac 're na khin vb' ebo:—

'Me ore olaga okaro iko-agbaziro 'Ward L' vb' Uselu. Vb' eghe vbi r' olaga oghe iko-agbaziro, ore i na mudia gu ezo oto eha n' Uselu ne Ward C, Ward I, kevbe Ward J' gu ima sinmwin. Igui ezo eheha na, i ke ghi rie ase mu obo yaen ikega. Rhunmwund oni, a ke ghi fan oto eha ni n' Uselu. Ukpo 1946, 1947, 1948 do se 1949, ore a ke gu ezo na hia a te do rie ase vb' ikpede okpayan-gban vb' uki August vbe 1949. Agbon hia ke ghi rhomwen esesemwense, ei re na ta. Vbe n' emwan ni r' ore Edo rhomwen, erio emwan ni r' Uselu vbe rhomwen. Ukpo ni dan-daan-dan 1949, ore i z' iro na koko igho na ya b' owa oghe Ward. Agbon hia ke ghi y' obo yo. Sokpan, igho ni ze yo ya ru iyobo, oro kpolo se n' emwan ni kere hia ze. Ikpon igbe vb' isele igbe, ore i ze. 'Ma b' owa ni kan onren fo y' ekhu yo, sokpan, 'ma ma mien igho ya sion-en. Ore i na y' eni Ward gben ebe gie D. O. vbe December 14, no ru iyobo yo. Iyabota no were a gben ebe, ti ye kpao bu A.D.O. (Nowanren Harris n' osemwen) ne D. O. rhie ebe ni yaen 're obo ya guee tae. Nowanren Harris ke ghi kha were, igho idolo-evbo (Development Fund) ni y' unu kan-en vb' ebe ni gben, a ma gha-re y' ore Edo; igue a mwanmwan-en yi na yae gha fian uhae ru emwin hia fefefe y' igue. Sokpan, o ke ghi we, rhunmwund' mwen, 'ren y' obo yo. O na mu ikpon iyeva g' ima. Ugben na ghi mu igho ni s' iko Ward, emwan hia ke we tii n' oghogho; iran ke gha ghemwen vb' angeli (Angel) no k' erinmwin re rhunmwund' oni ku ikuabo lelemwen s' owa. 'Me no mudia na ya gb' eken owa ni kan onren, 'me, o ye mudia ru chia fo. Ke 1949 ni do se 1951, ore i ya ru olaga iko-agbaziro Ward L vb' Uselu.

Vbe February 10, 1953, Nowanren McCall (D.O.) no r' Edo ke ghi rie Uselu do z' emwan ni gha mu akpa Uselu yo vb' ikotu. Ugben vba ghi t' iko, ore i na muen so were, Isibo Oviawe n' Esama n' omwan no ka yee, ore o kere no ye gha yee rhunmwunda, o ma ru emwin rokpa kho. Iran eso ghi khian kha, iran na wene D.O. McCall ghe ze yomwen 're. Ore D.O. na we, aan, n' iren ghe ze ye Chief Egharevba 're vbo guan. O na khama iran w' iran ma t' emwen ni ese. O ke ghi gbec wanien khama iran we, emwen ni rhirhi ta, 'ren khian gha gben y' oto iko te ve kevbe we, 'renhiigben oghe iran y' oto. O na we rhunmwunda, o ba ren mwen, evbo ren mwen levbasevba, me tobomwen, i

ren emwin gbe. O na we, 'nukpo na kha na, 'me, o te khe ke. O we sokpan, a ghi do ru, o ma y' emwen, o gha ke ghi ghere ukpo oyevbu; oni o ze nei na y' emwen. Ze vbe n' Osanobua ru emwin, emwen ne Nowanren Mc^cCall tae ederio ma wi, o gele do se okieke. Vbe 1956, ogienebo (Elizabeth II) kevbe Odafonren ke ghi rie Edo do mien oba, Ekhaemwen kevbe emwan Mid-West hia. Iran te weriegbe kpao, iran tuemwen. I gu iran guan, i so iran obo, i ma iran emwin levbasevba, iran tianmwem esesemwense. O ghi se January 1962 ogienebo na ye vbe y' emwen re ya mu egie gumwen "MBE". U gha ghe, emwen ne Nowanren Mc^cCall tae edeni o ma ze ta, Osanobua ore o rhiere y' ore unu, o ke ghi vbe se vberio zee.

Vbe January, 1952, Otu Edo hia ni re Uselu ke mu ohoghei bae ivbi-Ogboni ni ro were iran do gu iran gbina guoghoh emwin iran rua vb' ason vb' iran ku. T' iran ru ona na mien ehe na rhie iran oya kekan. Iran na do y' olakpa mu-no iran hia fefefe gha rie oghe D. O. Iran ke vbe kha were 'me debae iran ze vb' okpa vb' usun Otu Ogboni. I ma vbe zede gia no emwenmwem vb' ede gbe vbi ke isi-wina kpao gha rie ehe na mu-no iran ni yi vb' oghe D.O. Ugben vbi s' evba vb' owarokpa, D.O. ke ghi gua okpae-gbe somwen obo dololo aga yi me ni ya tota. Ore i na khama ren were ohoghei ore Otu Edo ta gha ma zede gu iran gbina hiehe sokpan na mien ehe na rhie Otu Ogboni oya kekan ore iran mudia yi levbasevba, olighi kvbe ukpokpo ore a y' ena si vb' evbo vba gha gb' omwan ugbenmwem ekueku. Uwuere ni, D. O. ke ghi rhie emwen ni tae we, 'ren wa yayi gh' ohoghei no kpataki na na rhie enimwen bare rhunmwunda, o ve n' agbon hia ren: oba, ekhaemwen, k' iran n' ukoh ogienebo we, i setin yin uyinmwem oya kevbe iruen vberio. Rhunmwund oni, o ke ghi fan-no ivbi Ogboni ni kua tie emwen ni hia fefefe ohoghei. O na khama mwen ni vio emwan 'mwem gha rie owa. Ota ghi re vbi k' iwina s' owa, iran na gha die oghomwen do kponmwemmwem. Ona ke vbe gha ye vbe n' ivbi-ekokoma Ogbe baemwen 're vbe 2 June 1953 were 'me kevbe ivbi-Ogboni eso ovbehe gbele iran vb' owa Ogboni ne Judge ma na vbe yayi no na rhiae ezoh ne Magistrate buru rua vbe 21 October 1953.

Vbe 12 August 1953, okpia okpa na tiere Kadiu—o ke ghi r' omwan no gbaro ghe iwina uwawa na ma oghe ogienebo vbe

Nigeria—na rie Edo; ore oba kevbe D.O. na we no do miemwen. Ore o na bumwen gha die Museum. Vba ghi miem egbe tue egbe guan ne, i na rhiere gha die Uselu. Ore i na tie iko ikhuo ni r' Uselu hia fefefe y' owa Ward no do gu iran guan; no ma iran vbe na ma akhe m' uwawa esi he. Okpia na ke ghi gele gu iran guan esese; o na w' iren gha weriegbe re, 'ren do ma iran vbe na rhie cement bae obue ya m' uwawa he. O ghi k' evba kpao, ore i na rhiere gha rie Use kevbe Oka vbe ya gu ikhuo ni r' odo guan o ke do kpao gha rie che no ke're vb' oto igabari.

Ugben vba bo eki oba fo ne vb' ukpo 1953—ukpo ni dandaandan ne Kadiu re—ikhuo Uselu ma ghi miem ehe na gha wae uwuwa kevbe akhe. Ore eso vb' iran na le bumwen do khama-mwen. Ore i na vio iran gha rie ehe ne D.O. ye. Ore i na guee guan were ikhuo Uselu i mwen ehe ne iran na wae emwin vb' eki no gumwen gualo ehe n' iran. O ke ghi gua kpao vbobovbobo ni lele ima gha rie eki oba. Ehe n' iran ghi wa na, ore ime kevbe D.O. ghi do ma iran re. Eri o vbe no, 'me ore o vbe gualo oto n' iran vb' eki Agbado n' iran na khien emwin.

K' eghe ni gha de ni ya b' owa y' Uselu i ke gha mwen ahoemwomwan gh' ivbi-Uselu hia. Vb' igiemwin, edokita (S. Inspector) gha s' owa omwan k' omwan vb' ore 'mwan deghe to gbiruen, no gha ya te tiere ezo, i ghi rinmwian-en no gie omwan ni doloe yi. Edokita ni ghi te kpao, i vbe k' ehun ne-en. A gha mu omwan vb' Uselu vb' igho uhunmwun, iran ghi do tiemwen, i ya mudia ne-en; ai mu-en y' eghan, sokpan okieke gha re, o ghi ha-osa. Deghe t' igho ere kpolo gbe, i ghi vbe rinmwian ne-en, iran ghi vbe fian hin vbo. N' egbe wore nei khian setin ghi ya z' igho, i gha gben ebe ne-en, i ghi rhiere gha rie ehe ne D.O. ye, a ghi faen fua. Olakpa gha mu iran vb' ore ason, iran gha su enimwen, a ghi z' iran obo ya l' ekhuemwen. Emwan nei mwen iwina, eri o i vbe v' iran y' iwina. Eri o i vbe gha mudia n' iran, vb' iwina k' iwina vb' iran gha khian laro. I ke vbe r' erha emwan nibun ni rhie ama vb' esosi.

Eniwanren ni do vbae vb' Uselu vbe 1925 ore—avbe: Oviawe, Iyase n' Uselu; Osodin n' Uselu, Uwangue n' Uselu, Esere n' Uselu, Eguezigbon kevbe Edogun ehia ni r' Uselu vb' Eguae Edaiken. Akhuemwenro Oviawe, Oviawe Asokiti kevbe Obano

vb' Idunmwun Oro. Igbinoba kevbe Uhunmwun-agho vb' Eguae Elaba. Ochia Ogbomade vb' Idunmwun Eson. Oviawe Osikpata, Uwagboe kevbe Emaye ni r' Eguae Enahen. Edo no r' Idunmwun Efeseke. Eson Orobo Igbinadolo kevbe Okungbowa ni r' Eguae Iha. Okundia, Igbinoba kevb' Ezedonmwun ni r' Eguae Ede iye Eresonyen. Ikhiwu kevbe Ighomo ni r' Eguae Ohogha II iye Akengbuda. Oha-imu kevbe Izeko ni r' Eguae Ose. Obadigie, Obano kevbe Evboomwan ni r' Idunmwun Omozogie. Eguakun, Obahiagbon Ehigiato ni r' Idunmwun Ugiomo. Osodin Ogbobo, Enobore Irene, Owaa, Orhiaekhi Oguname ni r' Eguae Iheya. Ena hia ore i do vbae vb' Uselu vbe 1925; iran ma gbe, ibiba Emaye kevbe Oha-imu n' oten onren ni gbaro ghemwen esesemwense.

Ason okpa vbe eghe no kpe re, Ekhibiorobo Izeko no re Uselu, ke ya tama Nigeria Police we Okpia okpa na tiere Uwagboe vbe Isioho dizigha. Police ke rhunmwundoni mu imoto gha khian ason ni na ya muen re sokpan ugben ne iran ghi se odoni iran ke ghi mien ghe ohoghei Ekhibiorobo tae Uwagboe ma dizigha hie-hie ore iran na mu Ekhibiorobo do khui, Ike do mudia ne-en. Ugben ne ede ghi gbe police ke niyen ma ebo, Police Major Garden, ore 'na we ne police tie Ekhibiorobo ezo ye magistrate court na muen ye eghan ukpo okpa rhunmwunda ohoghe dan no tae; ore ina rinmwian no loho ya lekhue mwun ighe edigue no oma ren emwin rhokpa-rhokpa, oke runmwundoni yae lekhue mwun faen fua oke tama ren gban-gban-gban ighe ogha ye ru vberio iren gha muen ye eghan ukpo eha. Unun ke yan avbe police ne barowa iran Major Garden na kue ye irimwian mwun, iran ke tama Ekhibiorobo no ya kponmwun mwun, runmwunda emwin ni ru ne-en gba gbe. Ekhibioroba ke gele do kponmwun mwun esesemwense vbe owa. Imuamwen Ebiyen okpa ke ghi ro vbekpa egie Iyase ne Oba Akenzua II mu ne Omorogbe Osagie vbe December 1960, ne emwan eso na khare we, Oba okpa ima iyase eva.

Vbe January 1961, Mr D. B. Patridge ne D.O., ke re do no mwun ota vbe owa, deghe Oba okpa setin ma iyase eva lelegbe, ina wanion tama ren we en, Oba no rhirhi to setin ma iyase eva ra eha lele-gbe-lelegbe. Vbe igiemwin, Oba Osemwende ma erha mwun odede Ohenmwun iyase, vbo ghi fi ya oma Okunbo

iyase, iyeke oni ona vbe ma Izemo iyase vbe Okunbo fi ya nen iren tobore ke do fi ya.

Vbe 13 april 1962, ebo nokhua no re Edo, J. D. Bullivant re do tuo mwen vbe owa vbekpa egie M.B.E. ne ogienebo mu gumwen, oke fon gie Governor vbe Ibadan na vio emwin te gbe oge egie ni gumwen vbe Edo owe rhunmwunda isetin ye Ibadan hiehe ne egbe mana ran mwen. Governor ke gele vio gumwen.

MUSEUM RA OWAMA

Vb' ukpo 1943 vbiyeke vbi gben ebe ladian ne we, o kere na mu museum gbọ y' Edo, Nowanren K. C. Murray (Director of Nigerian Antiquities) ke ghi d' ebemwen okpa (*Okha Edo*) vbe C.M.S. Bookshop vb' Eko, o na ya gha no otamwen de vbo s' Edo. Ore emwan eso na rhiere bu Ohen Payne vbe C.M.S. Mission House. Ohen Payne o ghi ma onren ode muen y' imoto bumwen gha die owamwen vb' Oweko vb' ehe ni na gben ebe. Iran ghi s' evba, o na ghoghọ mumwen esesemwense vbo mienmwen. 'Ma ghi ze guan, 'ma na ghi k' evba kpao gha rie Eguae ya mien omọ n' oba vbo ghi khamamwen vbekpae emwin no re ba. 'Ma ghi s' Eguae, o na vbe khama omọ, omọ na kakabo ghoghọ yo 'sese. O ghi khian kpao, o na khama omọ gh' iren gha y' Udo n' omọ z' omwan k' aro ya khama iran gh' ima de. Sokpan, o ma k' omọ ya z' omwan 'ma te kpao gha khian vb' ede nogieva. 'Me, o ghi khama Iyase kevbe eniwanren ni r' Udo emwin n' ima re ba. 'Ma ghi ghe emwin hia fefefe n' ima ho n' ima ghe ne, 'ma na weriegbe gha die Edo ederio. Ede gbi gbe, o na kpao gha rie Eko.

Ugben vbo se 1945, iran ke ghi k' Eko waya gie oba we: "the Director of the British Museum" kevbe Nowanren Murray die Edo ni do mudia khe iran vb' Eguae. Sokpan, oba ke ghi mianmian ya gie na khamamwen w' iran de ni do dia khe iran vb' Eguae. Udemwunri vb' owarokpa ni vb' iran re vb' iran ma do vbamwen vb' Eguae, iran ke ghi fiegbeweriegbe gha die owamwen vb' Oweko do mumwen gha khian. Iran ghi mien oba t' emwen hia n' iran ho n' iran ta ne vbekpae museum na khian mu gbọ y' Edo, iran na weriegbe gha rie Eko.

Vb' omuhen 1946, Nowanren Murray—iren okpa—ke ghi weriegbe re do mu museum gbo. Vbiyeke vbo ghi mien oba ne, 'ma na suen emwin-ama hia gha koko dolo yi. Y' owara edeha 'ma ya kp' ama hia fefefe khien ehia. 'Ma ghi ru eni fo, 'ma na kan ekpeti vio iran yi gualo ehe okpa mu iran ghe. Nowanren Murray ghi muegbe no khian ya kpao, ore omoo na khama onren we, omwan ovbehe rokpa, ro no gha die evba ya ra, na gha rhie yo no gha gbaro gh' iran gbera me rhunmwunda, k' eghe gha de, 'me ore omwan no ma abe erunmwunyen emwin ni hia vb' ehe na vio iran yi vb' Ugha. Rhunmwund' oni, Nowanren Murray ke ghi gele rhie isanhen me vbo ghi khian kpao.

Ke 1943 kpao a te do mu Museum gbo vbe 1946 ra, vbiyeke're, 'me kevbe Nowanren K. C. Murray gba y' ehe nibun. Ma y' Udo, Evbiekoi, Avbiama, Urho-ho Orogho, Ekae, Ugo n' Iyekorhionmwon, Ugo n' Iyekikpoba, Urhonigbe, Sakpoba (Esokponba) Ugboko, Ughoton. Igba-va ma y' Ughoton, Ugo n' Iyekorhionmwon kevbe Ugo n' Iyekikpoba. K' Ugba k' eghe, 'ma ya lele ehe hia nibun vb' isoko Edo.

Vbiyeke vbe Nowanren Murray kpao ne, D.O. ke A.D.O. ni rhirhi re, t' iran vbe gha gumwen gbaro gh' iwina ni khian rin-rhin-rin. Vb' eghe 'so, 'me vb' eso gba y' okhian kugbe; 'ma te weriegbe gha de, i ghi koko emwin-ama vio gha de. Vb' igiemwin, 'me kevbe D. O., J. D. Hamilton gba y' ehe nibun, sokpan, uhukpa kekan 'ma gba y' okhian. 'Ma lele Iyekorhionmwon hia fefefe: Ugboko, Ugo, Urhonigbe, Umoghunmwun, Ugu, Orogho, Ebazogbe, Urho-ehue kevbe ehe n' ogie Ugo (Agboghididi) na la eze (Igbaghon) vb' okuo Edo khue khian.

Vbi da suen iwina na gha wina, vb' emwanta, i ma suen igho uki wa gha mien vbobovboboni, i ka wina l' uki ene orogbo vbe ni ma na mien igho hiehie. Eghe ni a na gha tiemwen: Honorary Curator of the Benin Museum. O ghi ze kpe, vbe Nowanren Murray ghi weriegbe re, o na we, omwan i setin khian wa gha wina iwina khua kekan vbe ne-en na mien igho hiehie. Rhunmwund' oni, ore a ghi na suen gha ha-mwen osa ukikherhekherhe we, a te bo Museum

Eghe okpa, i na y' Eko ya do iko preservation of antiquities vbe 1948. 'PWD Library' ore ima na do iko ni. 'Ma do iko ni fo esesemwense, 'ma na ya niyen ma Governor (Sir John Macpherson)

vb' owa're. Ma te s' evba, o gb' asa rhu-asa ne. O ghi ze kpe, o na gha no donmwand' oghoe ota. Gia kha gho ka no orhunmwun okpa ota ne, o ke do nomwen. Vbiyeke oni, uhien, o vbe s' ifuaro eva, i ke do setin rhie ewanien y' ore. A ghi ru eni fo ne, o na do mwanmwan iko k' ihun n' ima. 'Ma na gha re, ma na gha da. Ehe n' ima na gha re, n' im ana da ni, Governor ke tota k' orhunmwun okpa (Nowanren Cooper), iran na gha guan. O ghi k' evba kpao, o na gha die ehe ni ye, o na tota kemwen y' obo kinmwun urhu. O na nomwen deghe iko n' ima do ni rhienrhienmwun. I na we, een, gho rhienrhienmwun. Uwuere ni, o ke vbe no deghe Edo gha vio ama eso gha die Eko 'Nigerian Museum' vba gha boe fo ne. Ore i na khama onren we, a setin ru vberio sokpan, na vio kpao vb' Edo vb' eghe okuo ebo vbe 1897, na vio eni weriegbe re vba gha b' oghe Edo. O na gie kuakuakua. O na we, 'gha vio re?' Ore ima na suen gha t' emwen ovbehe, o ke do kpao. Vb' agbon hia ghi re, da ne, o ke ghi khanmwun rhunmwunda, i guara mobo da ayon. I na khama Governor wi ho ni ya gh' owa 're hia fefefe. Governor ke ghi kue yo. O na z' orhunmwun eva (ebo) —a tie okpa Nowanren Bamer, a tie 'nokpa Nowanren English—ni ya rhienmwun l' owa re hia fefefe. Vba lae khian ni, ugben-so, i gha no ota, iran ghi rhie ewanien yomwen re, ugben-so, iran we sokpan i s' ehe ne Governor ye ni tobomwen no-ren. O ghi ze kpe, 'ma na se's efen okpa ni na mien ekpeti Edo (chest) negedegbe. Ekpeti na ke gha r' ekpeti erhan oghe Ovora-nmwun na gben no ye mosemose. I na w' iran kiere. Iran na we ta khuire gha i kie. Iran ghi rhienmwun l' ehia fo ne fefefe, i na weriegbe ya tota. Amwen Governor ke gha ghemwen ugemwen oyunu-a! I na do khama Governor wi mien ekpeti Edo Oghomwan, 'vba ni. O na we emwanta no ghi ma t' ohoghei gh' eghe okuo ni o na s' evba. I ke vbe we, 'ma gha bo museum ne, deghe uwa gha vbe weriegbe muen gha die Edo? O ke ghi wanien we: U gha ghe, a setin muen re ra, a setin vbe sera ye museum vb' Eko. I na we, oma. Rhin-rin-rin, iko na do ve, donmwand' oghoe na gha rie Owa. Ede ghi gbe vb' owie vb' ode ihe egogo igbe, Governor ke ghi foni (phone) gha rie PWD n' iran y' imoto mumwen gha de. Iran na gele do y' imoto mumwen vb' ehe ni dia gha khian. I ghi s' evba, Governor ke ghi mienmwun yi ke k' amwon-ren, 'ma na gha guan. O ghi ze kpe

kherhe, Governor na wẹ, emwin kpataki n' iren tiemwen ba na khin wẹ, i ma gben enimwen y' oto vb' ebe orhiovbe vb' evba (owa're) 'node. Ore i na wẹ, iran ma khamamwen, i gha te ru vberio. Ore o na mamwen ehe n' ebe ye, i na ya gben enimwen yo. I ghi gbon-en ne, 'ma na tue egbe weriegbe so egbe obo, o na ghi nomwen ede ni gha kpao. Ore i na wẹ, ugha ghe akhue ra, irakhue. Igha na kpao.

Vbe 1949, Okhaemwen Gaius Obaseki kevbe ebo okpa ke gha rie museum do gh' ughe edokpa. Ugben vb' iran ghi gh' ughe fo ne, ore ima na sun emwen ovbehe gha guan vbekpae vbe n' iran ya ha-mwen osa he. Okhaemwen Obaseki na tu vbo hon inu igbo ni mien. O na wẹ, igbo n' iran hae me ma se hiehie ghọ kherhe gbe—emo k' amwen, emo y' esuku. O na wẹ, ede gha gbe ni bu iren gha die odukhunmwun vbehe no na wina. Ede ghi gbe, i na ya mion-en 'vba. Vbiyeke oni, i na do gben ebe na fian yomwen igbo; ore iran na gele mwanmwan-en fian bamwen igbo.

Vb' eghe n' ogienebo n' okhuo (Elizabeth II) vb' odafon-ren na rie Nigeria vbe 1956, iran ke ghi rie Edo Governor kevbe Okhaemwen Obafemi Awolowo ni re Ibadan, iran na mudia khore vbe Aerodrome. O ghi ladian vb' ok'ehoho vb' owarokpa ni, o tue Governor kevbe Okhaemwen Awolowo. Eni na suce gha die ehe n' Oba ye. O ghi tue Oba ne, igie kevbe ekhaemwen eso ni re Mid-West na do tuoe. Ore Governor, Okhaemwen Awolowo kevbe Oba na rhiere gha die Museum. Ore Governor na rhie ima ('Me kevbe Nowanren Murray) na onren vb' urho Museum. O na so ima obo, o na la uwue Museum; odafon-ren na lelee kevbe Oba. Ore Nowanren Murray na ma-re emwin. Ugben vbe Nowanren Murray ghi ma-re emwin fo, o na gha die ehe ni ye. I na ma-re emwin; ehe ni ye o na kpe se. Vbiyeke oni, o na weriegbe gha die unu-rho Museum. A na we no mien emwan ni ghi wina iwina aman, vb' eghe na ye na. I na tie Ine n' Igun—eromwon; o tuoe, o na so ere obo. I na tie Nowanren S. I. Osula no ka erhan, o na tuoe, o na so ere obo. I ke vbe tic Ida no gben erhan, o na vbe tuoe so ere obo. Vb' iyeke oni, o na tue oba, tue emwan ni r' evba hia, o na kpao. O ghi kpao ne, igie hia fefefe na ruen la uwue Museum, i na ma iran emwin. Iran ghi gh' emwin ama ni hia fo ne, iran na kpa. Ogiason

gbaan vb' ode egogo oworo, i do ya kpao 'vba egogosi emwin-ama ni hia ya weriegbe ye museum. Uhiẹn, o s' ode iweva vb' ason, i te s' owa. Ede ghi gbe, ore Resident na bumwen gha die museum do rhomwen esesemwense y' iwina esiesi kpataki ni wina-en a te do do ehia fo. Resident Pender kevbe Cowen huemwen Museum gbe.

Ebo okpa na tiere Nowanren William Fagg—British Museum ore o ke reote gha mwanmwan-en vbo s' Edo vbe na gha ya rhiemwen gha rie evbo-ebo (London) he ni ya ruẹ emwin vbe British Museum kherhe ni vbe gha de rhunmwunda, o we, iren emwin gbe. Sokpan, vb' uwu emwanmwan na, ore emianmwen na de kumwen. Ren ore okpia no tae we, 'Dictionary of Antiquities' ore o kere na gha tiemwen rhunmwunda, iren emwin gbe vbekpae're.

O te do s' eghe n' emianmwen na ya de kun mwen vbe 1957, Obo Dike (principal of Ibadan University), o re do mienmwen w' iran khian suen gha gualo oto itan Edo n' iran khian gben ladian kevbe we, me, o khian su iran. Uzola okpa kekan tin-nien o kere n' ima suen vb' emianmwen na re. Obo Bradbury na rhiere no do gbọn-en ne itan, zozo y' emwen mwen esesemwense, ei re na ta; ren, o mumwen k' owa gha rie Hospital. Eghe okaro ni, i ma te ho ni ye Hospital hiehie, sokpan, ugben vbi ghi s' evba ni, emianmwen na gha ve yo: na ma ro, a ma ko hia na gha ladian.

K' omuhẹn gha de i ke gha ru 'Return' ra, 'Report' y' eko ukp'ukpo vbekpae iwina na. Ivbiesuku k' ehe hia re do gha gh' ughe 'vba: ke oto Igabari, oto Igbo, oto Iyoroba kevbe ehe hia fefefe vb' oto agbọn. Ebo gha re, t' iran y' usun re, ra, okhiokpa no, me, o vbe ma iran emwin hia.

Vbe February, 1958, Nowanren H. O. Uwaifo keghi bu Native Authority ya gu iran guan n' iran laho vb' ode k' ode hia n' iran ru emwanmwan na ya rhiere 'Pension' kherhe me rhunmwunda, i wina n' Edo gbe. O we, ebemwen ore a ya ru emwanmwan hia fefefe vb' Edo. O we, na kha werẹ arioba ogbọn oghe ogbakha na, me, o mueen gbọ. Rhunmwund' oni na tohanmwen na rhiere iyobo me n' iran rhiere 'Pension' kherhe me ni ya gha rie evbare. Sokpan, iran ma ruẹ.

Eriọ vbe nọ vbe President Nnamdi Azikiwe rie Edo vbe May 2, 1963, ọ ke ghi tianmwẹn rhomwẹn esesemwẹnse ma Oba kevbe Edo hia fefefe rhunmwund iwina esiesi ni wina n' Edo, ni ma na gie emwin Edo wi. O wẹ, i rhie eni Edo l' otọ agbon hia fefefe kevbe wẹ, University hia n' iren se vb' evbo-ebo kevbe Amerika (America) n' iren ma na miẹn ebemwẹn i ro: i t' eni Edo mu gbe. Rhunmwund' oni, ọ wẹ, i s' omwan na gha sa y' ama y' iwina ni wina-en n' Edo. O wẹ, 'ren vbe tian Oba, ọ gha ke, ọ vbe rhie iyobo me kherhekherhe.

UHUNMWUN 15

IWINA EBE

Nọ ru arusoto kevbe Aruehian a vbae. Eghianmwun wẹ ni ghe gben ebe okpa ra eva ladian sokpan, vbekpac ase kpataki oghe Osa n' Udazi i ke ghi gben ebe ehanyan-ugie do s' ede n' ere: iran ena khin: *Ekherhe vb' Itan Edo, Okha Edo, Agbedogboyo, A Short History of Benin, Ebe Imina, Benin Law and Custom, Concise Lives of the Famous Iyases of Benin. The Murder of Imaguero and Tragedy of Idah War, Benin Games and Sports, Urodagbon, Ihuan Edo, Some Stories of Ancient Benin, Some Tribal Gods of Southern Nigeria, Ozedu (Interpreter), The City of Benin, The Origin of Benin, Bini Titles, Ama z' evbo omwan tawiri, A Brief Life of the Hon. Gaius I. Obaseki, C.B.E., Marriage of the Princesses of Benin, Ere Edo, Iha Ominigbon, Brief Lives of Some Prominent Bini People, The Descriptive Catalogue of Benin Museum, Ibie Itan Edagbon Mwen etc.*

De ebe ne eghian ghi gben ladian? Iran gben ebe n' iran do vio vb' uwu ebemwen. Vbo rhirhi gha ye he, emwin hia r' obo Osa, ehi kevbe uhunmwun na mu re. Ai rie omwan uhimwen hichie.

ISI EMWIN A NA GUALO OTO ERE

AYAE bu ere we, ema le gb' utu, o le hinmwian re isi emwin a na gualo oto ere. Rhunmwund' oni, vbe Nowanren H. F. Marshall ne D.O. te gben ebe emwanmwan arioba-ogbakha oghe ore Edo kevbe igue hia fo, gbugbehia o ya tiemwen nomwen ota vbekpa re, i ghi rhan oto emwin hia ma onren esesemwense. Rhunmwunda, ebemwen 'Ekherhe Vb' Itan Edo', ore 'ren kevbe Edo hia ya gben emwanmwan ni hia fo.

Gbugbehia a vbe ya tiemwen ose y' ikotu (Iko) oghe D.O., ikotu oghe 'Magistrate' kevbe oghe Judge ya gha rhaen oto emwin hia vbekpa uhi kevbe uyinmwen Edo. Rhunmwunda, ebemwen ore iran lo vbe ikotu (iko) ni hia.

Ebe 'Ekherhe vb' Itan Edo' oghomwen ore D.O. ya bu ohien ezọ odion oto oghe Okhunmwun kevbe Utekon vbe Ekiadolọ vbe 1938. Ebemwen (Uhi kevbe Uyinmwen Edo) ore a ya bu ohien ukhu oghe ivbie "A. W. Brodrick" vbe Ikotu no yo oghe Judge vbe Warri vbe 1946. Ore Nowanren Bey ne D.O. vbe ya bu ohien oghe emwan Igbekhue n' Iyekorhionmwon kevbe ogie iran vbe 1952 vb' ore Edo; o ke vbe tiemwen ni rhan oto emwin vbekpa ezọ ni o ke buere fo.

Vbe 1951, okhaemwen Gaius Obaseki ke tiemwen ezọ ose evbo y' ikotu no yo oghe Chief Justice vb' ore Edo ni do rhan oto uhi kevbe uyinmwen Edo vbekpa ezọ irhia-eni (Libel) no tie okhaemwen H. Omo Osagie re. I ke gele ru vberio ze se Chief Justice oken.

Vb' eghe n' Obo Dike na gha gben eghe 'Nigerian Politics' vbe 1952, o rie Edo do miemwen vbe museum vbekpa Edo, ke vbe t' ota ma onren ze vbe no ho. Governor no re Ibadan Sir John Rankin' ke ghi khamamwen vbe museum vbo rie Edo

wẹ, ebemwẹn *Some Tribal gods of Southern Nigeria* ọre iran ya bu ohien ẹzo otọ ọghe Urhobo kevbe Isekiri vbe 1952; ọ ke vbe rhomwẹn yọ ẹsesemwẹnse. Ọ ke vbe gbẹe waniẹn vbenia khama-
mwẹn wẹ, iran ka gualọ ebe hia fẹfẹfẹ iran ma miẹn ẹmwanta
vbọ: ọghomwẹn iran na miẹn ẹmwanta.

Ebemwẹn ọre a vbe ya b' ohien ẹzo ọghe Jackson Obaseki vbe 1947. Ọre a vbe ya b' ohien ọghe 'Nọruwa Osazuwa vbe 1948.

Vb' ẹmwanta, ebemwẹn hia ke khin ukpa n' emwan hia ya deghe, rhunmwunda, nọ ma mu ukpa mwẹn ọ ghi khian vb' ebiebi. Ọ ke vbe khin isi emwin kpataki na na gualọ otọ emwin ni gbae hia.

ORHIỌN IZUA

ỌMWAN orhiọn izua kpataki ọre i khin rhunmwunda, ukpo ọdion a rhiemwẹn yi vb' otu ra, iko k' iko ni rhirhi lao ra, ebu k' ebu ra, ehe k' ehe ni rhirhi se: a ghi vbe rhiemwẹn gbera emwan nibun ni do vba vb' evba. I ru emwin eghere ra ate-ru; emwin k' emwin ni rhirhi ru, i ghi ruce s' oto hen-neden. Emwin k' emwin ni rhirhi s' obo mu, o ghi gha ma esesemwense.

Orhiọn izua odion kevbe atonmu nokhua okpa ni ore o sumwẹn na na y' emwẹn iha rhiemwẹn y' olotu ibieka vbe 1901. Vbi ma zede lele iran y' iha hiehie. Otu ni ke khian rhin-rin-rin, o ke d'obo yi. A ke weriegbe suen onren vb' ore Edo vbe 1940 do se 1953. 'Me, iran ye vbe rhie y' olotu rhunmwunda, iran we, iran i fiwerie ovbehe kevbe we uhunmwun-mwẹn ma iran. Iran mwẹn emọ kevbe amwẹn; iran mwẹn owa kevbe ode; iran mwẹn ugbo kevbe ogo; iran mwẹn imoto kevbe egedege.

Ona i re vbekpae etin ra ewaen, sokpan vbekpae orhiọn izua odion kevbe atonmu nokhua n' Osanobua ya yi-mwẹn no. Emwin hia r' obo Osa, ehi kevbe uhunmwun na mu re. Vbe n' Osa w' emwin gha ye, erio ye.

IKỌ KEVBE IDOBO

VBE ni miẹn ikọ kevbe idobo vb' ẹdẹ esuku mwẹn, eriọe bvii miẹn vb' ẹghẹ ni na gha gbẹn ebemwẹn (Ekherhe vb' It anEdu *A Short History of Benin* kevbe Uhi kevbe Uyinmwẹn Edo *Benin Law and Custom*).

I khare wẹ, 1914, i ke suẹn emwanmwani ebe gha gbẹn y' otọ kherhekherhe rin-rin-rin—i te do suẹn gha gbọn-ẹn y' ebe na tie vbe 1921 (Ekherhe vb' Itan Edo.). I gbọn-ẹn y' ebe vb' ukpo ni, i ma mu ẹtin yaẹn egbemwẹn ghi rẹn emwin rhunmwund' oni, i ke ghi bu ọsemwẹn ọkpa na tiere Nọwanrẹn Sawyer vbe PWD—ọ kakabọ rẹn emwin ẹsẹsemwẹnse—nọ tiere nọ gumwẹn dọlọe yi. Sokpan, ọkpa na ke ghi khamamwẹn wẹrẹ, 'irẹn khian miẹn obọ ya rue rhunmwunda, ugbenso, iran wina 'over time'. Ọ ke wẹ ni bu Nọwanrẹn C. J. Smart, i gha s' evba ni su eni irẹn ọ gha rhie iyobọ mẹ vbọ. Ugben vbi ghi gele s' evba, ọkpa na ke ghi gele miẹnmwẹn yi. Ọ te miẹnmwẹn ebe ni, ọ ke ghi fianmwẹn ikpon isẹn, i na hae ikpon eha nẹ-ẹn vbọ; ọ na suẹn ọnrẹn gha wina y' ekhọe emwanta dọlọe yi. Vb' uwuere ni, ẹzọ otọ eso ke ghi s' unu vbe Koko; iran na we nọ gbẹn ebe n' iran. Ebemwẹn ni ọre o lele nọ ya gbọn-ẹn n' iran na haere ikpon ugie. Ọ ke ghi ru emwin ọmwanta, ọ ma rhie igho ni lere mẹ rhunmwunda, ebemwẹn ọ re ọ ze ghọ setin gbọn-ẹn miẹn igho ni. Vbiyeke oni, deghe ọmwani k' ọmwani ghi khian gbẹn ebe vb' obore, ọ we nọ bumwẹn gha de ni gue gbọn-ẹn rhunmwunda, i rẹn uro esi na gbẹn ebe laọ. Ọ wẹ ebemwẹn mobọ gia lele rhunmwunda, i rẹn vbe na ya muẹn emwẹn gh' ukhunmwun muẹn gh' otọ hẹ. Sokpan, ọ ghi sẹ 1927, i gha ghi s' ọghẹ, ọ gha mu ebe ni lere mẹ; ọ na gha gbọn-ẹn y' ebe ọvbehe yae khin ọghẹ. Nọwanrẹn C. E. Olotu kevbe Nọwanrẹn

Iranmwinnran Osula, iran ọre ọ y'ere ike wẹ nọ gbọn-ẹn nọ yae khin ọghẹe ghọ rẹn ebe esesemwense ghi ma rẹn ebe vbare: 'ron-ẹn ne B.A. Okpia na ma te ho nọ ru vberio, sokpan, ugben vb' iran ghi kpikpiee w' iran gha rhie iyobo ne-ẹn, ọ na ru vberio. Vbiyeke vbi ghi rẹn, i na gha l' ode hia ni mien ebemwen weriegbe. Ọ ghi s' edokpa vbi ye post office, i ke de-kun Nowanren. Olotu 'vba vbo 'post' ebe ni weriegbe gumwen. Ugben vbo ghi somwen obo, i ke ghi mien wẹ, oghomwen nọ ni mu ne-ẹn nọ dolọ yi. Ọ mu weriegbe re sokpan, nọ dolọ yi vbo na y' emasini (typewriter) gben, ọ mu ya khien ọghẹ. Ohu ke ghi mumwen yo esesemwense vbi mion-ẹn vberio rhunmwund' oni, i na gben ebe gie D. O. (Nowanren Asher) nọ r' Edo eghe ni vbekpa're. Nowanren Asher mien ebe ni vbe tiere, ọ na fieghe uhunmwun; ọ na wẹ, omwan olighi ore Smart gele khin. D.O. ke ghi bumwen ude ni bu Omugui McCormick rhunmwunda, ọ gha setin sumwen. I na gha khian. I ghi s' ogho Omugui ni, ọ ke ghi khamamwen w' iron-ẹn zegiegie rie Warri ni mudia khe iren. Sokpan, ọ ghi te weriegbe re, ore i na ya khama Edaikẹn (Akenzua). Ọ ke ghi rinmwianmwun ni ghe tiere ezo ra, deghe i tiere ezo ne, ni ya kiere weriegbe rhunmwunda, ose iren nọ kevbe wẹ, 'rẹn ọ ma emwin vbe Kings college vb'eko rhunmund' oni, ọ na bu erha iren gha de. A mien gh' ezo okpa ka s' unu, a gha kha gh' erha iren kpokpee, omwan nọ lele iren khian vbe kpokpee gh' iren mwun obo vbo ni laho ni he wẹ. Ore i na ru vberio sokpan, i na ghi gben ebe ya mun-re imu wẹ, eghe k' eghe nọ rhirhi ya gben ebe ni ladian, i gha guee gui ezo. Uwuere ni, ọ ke ghi le kpao vb' Edo gha rie ehe ovbehe; ọ ma ghi weriegbe re rhin-rin-rin—y' owaro ukpo okpa.

Vbiyeke oni, i na do tobomwen weriegbe gha gben ebemwen dolẹe yi. I ghi gben fo ne fefefe, Edaikẹn na we ni mu-re n' iren ghẹre; i na mu giẹe. Uwu eghe nọ na gha ghẹre ni, emwin okpa ke ghi sunsun y'ore aro vbe vbo. Oni ke gha r' eni avbe Oba hia ni re gbera. I na khama onren deghe Ọ khian gualo otore, nọ z' omwna na tie lhogbe ọ re eva nọ ra eha. Ọ ke ghi gele ru vberio zee ni khare; ọ na z' emwan na tie iran (Eguobadia kevbe ogieva're); iran na do vbamwen vba. Ore ọ na nọ iran eni avbe Oba ni re hia, ore 'Guobadia na sun gha nana-ẹn de zee vbe ni gben iran y' ebe okade-okade. Ọ ke ghi kakabo yaen onren unu-a.

Iran ghi khian gha rie owa, ọre i na mu unu y' Edaiken eho no k' ehun' iran. Ọ na rhie ọgo ebie (Beer) vb' ikpe evbe eva n' iran.

Ọ ghi se March 15, 1930, i ke ghi khama Edaiken were ebe ni, i ho ni ya tiere ma ọmọ n' Ọba (Eweka II) no sumwen gha khian. Edaiken ke ghi gele kue yo. 'Ma ghi s' evba, ọ na mien ima yi, 'ma na sun gha tiere ma onren. Emwin okpa ke ghi ro n' Edaiken vbe gumwen mua vb' ebe ni ni gben yo. Oni ore eni ovbi-aruaran na tiere Onioni no khare were Oruru no. Ugben vb' ima ghi tiere khian vb' odaro ọmọ, 'ma ghi tie s' evba, 'ma na tie Oruru, ore ọmọ na we, ei r' Oruru gh' Onioni no. Ọwarokpa ni Edaiken ke ghi khama erhae we, Onioni i te ka gben yo sokpan, 'ren, ọ we ni fiwerie ye' Oruru. Ọmọ n' Ọba na we ohoghei no ghe ni tae ore emwanta. 'Ma ghi tie ebe ni fo ne, ọ ke ghi rhomwen esesemwense khamamwen ni gha rie ehe n' iren ye gbugbehia.

Ugben vbo ghi s' eghe okpa, Edaiken na we 'ren gha rhie iyobo me vbi rinmwian-en we, i ma mien igbo ya 'piti (Print) ebemwen ladian. I na khekhekheke, gbe-i.

Vbe uki May 1932, Resident no r' Ọyo (Nowanren Ward Price), na rie Edo do n' ota emwin eso; Ọba k' ekhaemwen hia fefefe na gba vbe Hall. Ebemwen ni o mu ladian no tiere na ya gualo otore. Uki ni dandaandan vbe 1932, ore Edaiken mienmwen ebe ni wiren khian ghemwin okpa vbo. I na khekhekheke . . . uzola okpa, uzola eva, uzola eha, uki okpa uki eva, uki eha, uki ene no mu ebe ni weriegbe gumwen, ọ ma mu gumwen. Rhunmwund oni, i na zegiegie rhie ovbehe no guemwen gie Ohen Payne no 'Piti' ere. Ọ ke ladian vbe February 1933: i ke vbe rhie okpa gie (Edaiken) vbe vbo. 1936, oghe ebo no ro (*A Short History of Benin*) ladian. Iran hia ni te mudia yo n' iran gumwen sinmwion-en, ọ na yan chia unu-a.

Ugben vbi gben uhi kevbe uyinmwun Edo y' ebe ne (*Benin Law and Custom*), vbe 1945, i ke ghi mu gie ọmọ n' Ọba (Akenzua II) no gben 'introduction' yo me. Ọ ghi tiere fo ne fefefe, ọ na we, ọ kakabo ma esesemwense gh' iren gha gbon-en yo me. Ọ ghi kpe fua rin-rin-rin, i gha ghi s' Eguae ya no-ren ebe ni, ọ gha khamamwen gh' iren de. Usu emwen n' ọmọ n' Ọba gben kaen na khin we: omwan gha rhie egie vb' Edo, eni egie ni a tiere, ai ghi tiere eni obore. Ọwe, sokpan, 'me gha gben

'Chief Egharevba, gbugbehia. O wẹ, i ma ghi ye gh' eni egie ni a tie Chief mu. Sokpan, ogbenebe nokhua oghe Daily Times—ei zede r' omwanmwẹn—ke ghi wanion-en wẹre, ei r' emwẹn ni gben ore o rhie ewaniẹn yi rhunmwunda, ogh e egie ma mwẹn vbo de kaẹn vbekpae're. O na wẹ, a gha vbe wẹ oghe egie no, oghomwẹn o gbae rhunmwunda vbo, omwan no rie egie ni ore 'Chief', ei r' eni egie ni kekan. O ghi kpe fua kherhe vb' imuaemwẹn na ghi do yo, i na do priti ebemwẹn ladian vbe March, 1946. Deghe ei re masini (Printing Press) oghe obomwẹn ni ya priti ere, ei ghe he kemwẹn ya rue rhunmwunda, i he ye miẹn igho. Osanobua ke ghi rue, o na y' ekhue mu esu. Ke 1945 ni ghe de, ore i ghi ke gha khian kuegbe mu vb' ehe no ye. 'Me o ghi yae re gha tie Chief gina eni omwan vb' Edo k' eghe ni gha de.

Na vio vb' ebemwẹn ore a ya ru uegamwẹn Aruosa do se ede n' ere kevbe wẹ, emwenta eso na rhie vbo ore a ya mu eyoto're gbo rhunmwunda, vbe na tie Osanobua he, tie Olokun he, chia fefefe ore i gben y' ebe ni (*Benin Law and Custom*). Ohen-Osa no ro (Nowanren Asuẹn) ke ghi r' omwan emwenta rhunmwunda, inugba no rhirhi miẹnmwẹn ore o ya tuemwẹn y' okha Edo ni gben rhunmwund' iyobo n' ebe ni rhie n' iran.

O kere n' emwan hia ren iwina ni wina-en, ei r' etin ra ewaemwẹn o se vberio sokpan, vbe n' Osanobua giemwẹn ore i ru: n' emwin hia na dina ode me. Rhunmwunda, agbon te wẹ ni ghe rie evbare hiehie, a vio okpan ema kevbe uwawa uwomwẹn yomwena 'khara; iran wẹ ni ghe won ame, a mu ogo 'winski (whiskey) yomwẹn etebu (table) rhie ekalaka bare: i re, i dae, i ya ghae. Agbon wẹ na ghe hon emwẹnmwẹn vb' Edo ra, vb' oto Edo. A hon emwẹnmwẹn vbe Nigeria hia, Afrika (Africa) hia, Europe hia, Australia hia, Amerika (America) hia l' uhunmwun oto agbon hia fo fefefe. Agbon suamwẹn khian-khuankhuan ni miẹn ehe na de. Sokpan Osa yomwẹn obo, i ma de. Gha ru ona me? Enoyanmwẹn. No levbasevba, iwina Onren ke r' oyunu-a. Ede n' ere na, i gha wu, uwu esi i wu rhunmwunda, uhunmwun n' Osanobua giemwẹn re, i wina-en s' oto me. Ra deghe ei r' emianmwẹn ni khuonmwun na, ti gha te gha golo yo golo, tie ose tie edogbo n' iran do gha re, n' iran do gha da, na gha gbe we so ihuan uyi vbenia:

Uyi nọ oo, uyi nọ oo,
Uyi nọ n' Osanobua mwẹn
Uyi nọ oo, uyi nọ oo,
Uyi nọ n' Osanobua mwẹn
Ekponmwẹn nọ
N' Osanobua mwẹn
Urhomwẹn nọ
Uyi nọ
N' Osanobua mwẹn.

Rhunmwunda mę n' Egharevba o yae z' ere wẹ: Ulelefe nọ gha rhue ẹrhu, eni gha kpano-ẹn kua igba iwene, to gha ye rhue ẹrhu ni vb' ẹtin Osa. Ere na ke ghi khe ke wẹ, omwan n' Osa gie nọ do ru emwin, ei ruẹ bakun rhunmwunda, ze vbe ni miẹn ikọ kevbe idobo se vb' iwina na, erio i vbe ya miẹn ẹtin nokhuokhua vb' Obosa ya ru arusoto.

OSE

ỌSE nibun ọre i mwẹn vb' otọ agbọn: emwan nifua kevbe nekhui. Avbe ọsemwẹn ni r' evbo-ebo (Europe) kevbe Amerika (America) ma esesemwense. Sokpan, ibozeghe ọre a miẹn ze vb' ọsemwẹn n' emwan nekhui; ose emwanta i r' uwu iran hiehie. "A gha rere egbe, ai gui" chia khin.

Ukpo-emianmwẹn ni ye k' eghe gha de gele rie ma ghi, i mwẹn ose emwanta vb' emwan nekhui rhunmwunda, a ma miẹn omwan rokpa vb' uwu iran no rie ehe ni ye hiehie vbe n' avbe ọsemwẹn nifua re do gha tuomwẹn gbugbehia.

Vb' eghe okpa vb' uki May vbe 1933, ọsemwẹn okpa (Alufa Balogun Adeoye) ke do tuomwẹn vb' owa. Ọ ghi ghemwẹn yo, ghemwẹn re, ọ na khamamwẹn we, ọsemwẹn okpa ro no z' iro ofuan, akuokan kevbe adeghiyeke-dan ghemwẹn gbugbehia. Ọ we sokpan, ei khian setin rhunmwunda, ọ we, emwin okpa i ro no gha ruce ra, no gha dae yi nai khian na hon eni mwẹn l otọ agbọn na hia. Ọ ke ghi bumwẹn ude ni ghe fian afianma rhunmwunda, ai gb' ogba khe eni vb' ode—erio Osanobua ru emwinmwẹn hia fefefe ni rhirhi gha ru ra, ni gha rhie obọ yi levbasevba, iro dan n' omwan ni mwanmwan damwẹn, Osanobua i gie se ọ ghi yace khin oma.

ẸSE KEVBE IRUEMWIN-ẸSE

ẸSE kevbe iruemwin-ẹse ọ gba khian: itohan ke ghi debae iran. Ẹse esi na ru mwẹn ekponmwẹn kevbe utianmwẹn. Iruemwin-se mwẹn uyi kevbe urhomwẹn. Itohan vbe mwẹn afiangbe. Ehia na ke ghi gba vb' egbemwẹn.

Ze vb' omwan iyayi kevbe ekhoe no fure, gbugbehia i ya gha tue iran n' egbe ma rhan vb' owa kevbe Hospital. I ghi vbe y' emwin n' iran. Eriọ ivbe rhie igbo, ukpon kevbe evbare n' ivbiogue ke nimwẹn. Eriọ i vbe gha viọ iran ne i mwẹn owa; ikpia kevbe ikhuo y owa-mwẹn, i vbe gha gbaro gh' iran. Vb' igiemwin, i rhie Okhiaro kevbe (ovbiere n' okpia: 'Osarobo') y' owa ke 1930 do se 1931. I viọ ivbie Omorodion (Oten iyemwẹn) avbe: Evbayemwẹnru, Ehimatie, Uzebu, Omorenuwa kevbe iye iran y' owa vbe 1930 do se 1932. I rhie Iyoha Aguebo; iyee (Emokpolo), amwẹn onren (Ogbohu) kevbe oten onren (Samson) y' owa ke April 1931 kpao do se August 1941. I rhie Iserhien-rhien Uwagboe y' owa gha koko ke 1936 do se 1937 vbo rue emasini na ya dolọ ukpon. I rhie Edede Ebu y' owa ke 1936 do se 1943. 'Oni' ovbie Edowaye (oten iyemwẹn), i rhie y' owa vbe 1939 do se 1952. I rhie Aikpitanyi y' owa ke January 1953 do se April 1964. I rhie uselu Ighomo y' owa ke 1953 do s' ede n' ere. I rhie Modina Ibrahim Elahọ kee k' iyee (Sefi Fayemi) y' owa ke May 1959 do s' ede n' ere.

Oriovbe ughughan nibun ni gbera yo, gbera re,—avbe: Hausa, Iyoroba, Igbo, Urhobo, Isekiri kevbe ni kere ni dia owa-mwẹn ya gbugbehia, i ghi gbaro gh' iran mu ogho y' iran egbe esesemwense. Eriọ i vbe muoghọ y' iran ni do gha tuomwẹn eghe k' eghe.

Obomwẹn kevbe "Printing Press" oghomwẹn ore iran na na

rue iwina "Printing" guę. Iran ọre: John Ọmọregie Ọbazeę ke 1935 do se 1936, Aliu Aguebo ke 1937 do se 1938, Timothy Ajayi ke 1945 do se 1946 kevbe ni kere.

Eghe k' eghe ra, gbugbehia ọre i ya rhie iyobo igbo n' emwan eso ni b' owa ọgbon na dia, esosi kevbe esuku ọghe ọgbon na mu gbo n iran kporhu ere s' che ni ye.

UHUNMWUN 21

URHOMWEN

UGBEN vbe ebemwen nikaro, (*Ekherhe vb' Itan Edo, Okha Edo, Aigbedegbeyo* kevbe *A Short History of Benin* ladian vbe 1933 do se 1936, evbo hia ke gha gben ebe urhomwen gumwen vb ehe hia gbugbehia. Eleta ni mien ke ghi re: ihinrin-yan-iyisen (109) debae oghẹ Nowanren L. M. Bucher ne D. O. no r' Esan (Ishan). Nowanren J. W. Thorburn (Ebo esuku no r' Edo) ke gben ebe esiesi ya rho mwen. O ke vbe mu efoto nokhua oghẹ ogienebo. "King Gorge V" baere gumwen. 'Nebe ona khin:

MEMORANDUM

From
No. B. 24/447
Superintendent of Education
Benin City
January 9, 1936.

To
Mr Jacob U. Egharevba,
Lagos Street,
Benin City.

Dear Mr Egharevba,

Thank you for the *Short History of Benin*. I congratulate you on a most interesting and useful production. I regret the Benin vocabulary was not acknowledged previously.

J. W. Thorburn
Superintendent of Education
Benin Province.

I am sending you a portrait of His Majesty the King.

Nowanren J. W. Thorburn ke ghi y' iyi na gha lo ebemwen (*Okha Edo* kevbe *A Short History of Benin*) vbe esuku hia fefefe ni r' Edo: a na gele gha lo ere rhin-rin-rin ze vbe no khare.

Vbe 1946, erio a vbe gben ebe nibun k'che hia gunmwen ya rhomwen esesemwense vb' ebemwen *Benin Law and Custom* kevbe *Concise Lives of the Famous Iyases of Benin* ladian.

Ke July 11 1933 gha de, ehe hia a na tiemwen ni do gha ma mwan hia emwin. A tiemwen vb' Edo College, C.M.S. School, kevbe Esuku nibun hia, ibiba Benin Museum ni na mobo ma ivbi-esuku ughunghan hia kevbe emwan ovbehe ni k' ehe ughunghan re vbe: 'Nigeria, Europe, Asia, Australia, America, Africa ra, ehe hia vb' oto agbon na' emwin. Urhomwen na rhomwen y' ebe orhiovbe (visitors' book) vbe musuem gba gbe ra, oyunu-a no vbekpae emwin ni ma ivbi-esuku kevbe emwan kekan re. A gha ye masini gbon-en, o gha se ititi ebe okpa levbasevba, ogha vbe rhiendrhiend gbe na tie.

Vbo rhirhi gha ye he, ovbi-mwen no do gha gben itan ede agbon-mwen na y' oto ze vbe n' iran ni re University mwanmwan-en, erio rhie obo rhie owe lele. Eko-rhiendrhiendmwen ore o ya gha ruee. O ke vbe rho mwen esesemwense rhunmwund' emwanmwan ni mwanmwan-en vb' iwina ebe na.

Obo Hans Melzian gben ebe y' iyen ya rhomwen esesemwense. O ke tian ebemwen *Ekherhe vb' itan Edo* kevbe *Okha Edo*, gh' iran ke n' emwin-esi hia vbe 1937.

Edo hia gben ebe ya rhomwen esesemwense we, ebemwen hia ma gbe vb' emwanta kevbe ewaen vbe 1937.

Vbe February 1939, i ye Sapele ya tue omwon-rho I. T. Palmer. O ke mu ogho yomwen egbe esesemwense. Ma gba t' emwen ni rhiendrhiend nibun hia, o ke rhomwen esesemwense rhunmwunda, uyinmwen esi-mwen kevbe emwen n' unu-mwen; kevbe we, ewaenmwen gba gbe. O ke nerhunmwun we, n' Osa gie Oba Edo (Akenzua II) setin gha y' ude mwen ru emwin. Ugben vbi ghi die owa, o ke sunwen k' egedege s' oto, ore o na khama-mwen we, rhunmwund' uyimw'esi mwen kevbe emwen n' unu-mwen no rhiendrhiend, ore iren na y'ogo Ewisky y'ogho me ze vbe n' iren gha rie n' Oni no r' Ife kevbe Alake no r' Abeokuta. Ore o na somwen obo; o ke gb' okhien-dehia me. I ke ghi kakabo rhie ekpomwen ne-en. I ke vbe ye UAC

sawmill, Manager kevbe emwan ni wina vbe vba hia ke ghi rhomwen esesemwense. Emwan ni wina vb' evba eghe ni ke ghi r' Iyisen-yan-aria-cha (700).

Nowanren K. C. Murray gben ebe y' ebe iyen ya rhonmwen. O ke vbe tian ebemwen hia esesemwense vbe 1946.

Obo R. E. Bradbury vbe gben ebe y' ebe iyen ya rhonmwen vbe 1954. O ke vbe tian ebemwen hia, ibiba *A Short History of Benin*.

Obo K. O. Dike no ghi re Principal vbe University Ibadan na, ke rhomwen ma oba, ekhaemwen kevbe emwan n' Edo hia vbe Conference Hall January 21 1957 rhunmwund' ebe ni gben hia, ibiba *A Short History of Benin* kevbe emwanmwan eghe n' okaro, n' ogieva kevbe n' ogiecha oghe arioba Edo ni mwanmwan yo. O we, ewaemwen gba gbe.

Vb' iran ya ko vb' Enugu vbe 1960, ivbi-otu itan Nigeria ke gben ebe ya rhomwen rhunmwund' ebe ni gben hia, ibiba vbe kpa Edo.

Obo Nnamdi Azikiwe no re President oghe Nigerian Republic na vbe rhomwen esesemwense ma Oba, ekhaemwen kevbe emwan n' Edo hia vbe Conference Hall vbe May 2 1963 rhunmwund' ebe ni gben hia ni ma na gie emwin Edo wi. O khare we, ehe n' iren se hia vbe Europe kevbe Amerika (America) ore iren na mien avbe ebemwen vbe University. O we, o kere na samwen y' ama eronmwon oghe ayere ededemwende, ebemwen hia ke ghi r' ukpa n' emwan hia ya deghe kevbe iwina-esi ni wina n' Edo.

Nowanren C. Akuegbo ke kakabo gben ebe y' ebe iyen ya rhomwen vbe September 8 1964 we, okhaemwin-se nokhua na rhie ogho na me khin vbekpa itan Edo, kevbe ni kere.

OGHO

OGHO ore ose; uyi ore emwin-tengbe; Imuegberhioto vbe r' ede ose. Enena hia ke ghi gba vb' egbe kevbe uyinmwemwen. Ze vb ayi-mwen, i mwen ogho gbe. Gbugbehia ore i ya rhie ogho n' emwan hia fefefe. Oba kevbe ekhagemwen; ikpia kevbe ikhuo; edion kevbe ibieka, se hia, 'me, o vbe ka tue omwan k' omwan hia.

Gbugbehia ore ibiekamwen hia ya gunmwemwen gui we, i ka gha tue ekeke kevbe eyenyen hia. Sokpan, i vbe waniem khama iran we: ai wua na ka tue ovbokhan rhunmwunda, a gba da n' egbe kevbe we, vbe n' ogho, uyi kevbe imuegberhioto ke n' odion, erio o vbe ke n' ovbokhan rhunmwunda, eken oro khin okpa kevbe iye okhokho. Levbasevba, igbo eva otue khin: ona gha rhie ukpogho, 'nokpa ghi vbe rhie ukpogho. Oni no we, u gha tue omwan, o ghi vbe tuo weriegbe. Ohe ore ogho, uyi, kevbe imuegberhioto rhie n' emwan, ibiba, ohe ukpo esi.

Itengbemu i ma hiehie, to si omwan k' oto, o vbe y' omwan gb' akuokan emwin esi hia. Odion no ma mu ogho y' egbe, ovbokhan ghi yaghae; ei mien emwin rokpa ru ere. Rhunmwund oni, ogho, uyi, kevbe imuegberhioto, ore o ma se emwin hia fefefe. Eniwanren hia hoemwemwen gbe baemwen ogho, uyi ni rhie n' emwan hia kevbe uyinmwemwen khuere ni yin gbugbehia.

Vbekpae ogho, uyi kevbe imuegberhioto oghomwen, okpa vb' uwu eghianmwemwen ke ghi ro ghe ti kon-en: o ma ren ghe no hunmwemwen ma kon; eko emwen ye vb' osisi. Vbe ni mwen ogho, uyi kevbe imuegberhioto se, erio i vbe ya ren 'negbe bare. Rhunmwunda, i ru emwin oyara, i vbe ru emwin a te. Ogho ore i khare n' emwan hia gha mwen rhunmwunda, ogho ore ose.

Ze vb' ọmwan na ze y' olotu otu kpataki, ivbi-otunmwẹn hia fẹfẹfẹ—nọwanrẹn k' ọvbokhan—, iran hia rhie ọgho mẹ ze vb' ọgho ni vbe mwẹn n' emwan hia fẹfẹfẹ. Uhiẹn, t' iran yẹ da mẹ do s' ẹghẹ ni ye na rhunmwunda nọ rhirhi miẹnmwẹn vb' uwu iran, ọ ye vbe nọ miẹn ọgie.

OWA IYAYI

OWA iyayi nọ gbae ọre owa-mwẹn khin. Rhunmwunda, ke 1914 ni ya yayi gha de, ọwie kevbe ota a ya nerhunmwun vb' owa-mwẹn ede-gbegbe kevbe ugbugbehia.

Erhunmwun a ya kie owa-mwẹn nọ r' Uselu ni na si larọ vbe March 1926 vba bọe fo. K' eghe ni gha de, owie kevbe ota' a ghi kp' egogo gb' ebu si koko a ghi s' ihuan, a ghi tie 'Bible' nọhuanren a ke nerhunmwun; a ghi ka nerhunmwun n' oto Agbon na hia ne' evbo emwan nifua kevbe nekhui — Oba k' ekhaemwen; ikpia kevbe ikhuo; ediọn kevbe ibie; uko-isuevbo kevbe ohenosa; ogbugbo kevbe odueki; emaemwan-emwin kevbe ivbicsuku; ose kevbe edogbo; egbee n' oberha kevbe obiye; unien kevbe ukhuara; erhuaen, emwan na renren ke na ma ren hia; eten n' ikpia kevbe ikhuo; iwu kevbe eyee ni r' owa kevbe ni r' isi; emọ kevbe amwen debae igiowa hia.

'Me, ọvbokhanmwẹn kevbe ivbimwen, 'Ma gu erhunmwun na na gbe. Ọvbokhamwen n' ima gba si la ọwa na (Okhuoba Hanah Ọmọzuwa Egharevba), ke ghi r' okhuo esiesi kevbe iyayi esiesi l' ede Agbon onren hia fo.

Emọ ma gbe vb' owa. Zee vbe na gele yae bu ere we, ọmọ ọre owa. Eguomwandia kevbe iyegbeko, eten kevbe egbee gharie, emọ ye tota kpekpekepe. Iran ghi sikan mu erha kevbe iye iran malomalo. Iran i y' ehe rokpa hiehie. Rhunmwund' oni, ọmọ s' efe kevbe ovbiye.

Ivbimwen rhie uyi kevbe ogho n' egbe gbugbehia. Iran digue tue egbe elavbatue owiowie osegbosegbe. N' osa g' ime vb' ibiekamwen y' ofure kevbe egberhanmwẹn yin owa-mwẹn nọ vbe gha r' owa iyayi khian rhin-rin-rin—ise.

Emọ n' osa ya wemwen ena khin: Victoria Ikponmwosa,

Comfort Oghomwensemwen. Eunice Itohan, Joseph Osarogiagbon, Jane Osarenkhoe, David 'Sonarae, Clara Osemoyenmwun Deborah Enina, Taiwo Osaman, Kenhinde Omosovbiye, Adupe Egberanmwun kevbe ni kere Eye ena vbe khin: ivbie Victoria Ikponmwosa: Dele Onaiwu, Sunday kevbe Kolawole. Ivbie Comfort Oghomwensemwen: Lucy, Odemwingie, Isoken kevbe Osasuyi. Ivbie Eunice Itohan: Osarobo, Nosakhare, kevbe Ewemade. Ivbie Joseph Osarogiagbon: Osariemen, Aimuanmwosa, Omonirowa kevbe Monday. Ivbie Jane Osarenkhoe. Fatayi Igue Memunatu kevbe Ibrahim Egiebo; Ovbie Clara: Leo. N'osa gbaro gh'iran hia fefefe Ise.

IKU ẸGHE IMIOBO

K'oto gha de ike gha ku iku ughunghan hia na ku. Vb' igiemwin, i setin gb' eboru (ball) kherhekherhe, i setin kakabo rhule, i setin gb' obodo, i setin takhirhi, i setin san, i setin fi akhue, i setin hin odukhunmwun, i setin t' ise sesemwense, i setin s'ihuan, i setin kp' ema i setin gbe vb' iku, i setin t' okha vbe ibota otota, se hia, i setin tie ebe gbugbehia levbasevba, i gue akhue esesemwense. I vbe setin t' ise uwuobo oghe okpan, izu, oyo kevbe ise na fi gh' ukhunmwun. I setin si ogbo, i setin sulele, i vbe setin fi oleghere. I setin fi ewoe, i setin gb' okaka, i vbe setin gb' izabobo kevbe igiugio. I setin kolo evbee, edun, ako, okhue kevbe orunmwun. Igua tise Edo ughughan nibun hia, avbe:- Ogbagbe, Iyagbe, Agbonzeloghomo-mwan-omadomwan-igie, Gberemadaka, omonise, Aghadaghada, kevbeni kere Oma ke ne Ise hia na wi, rhunmwunda oke ghi mwen ere kevbe iruenmwin nidinmwin esesemwense vbe kpa Edo, ibiba Ogbagbe kevbe Iyagbe. Urise Iweva oro, Igbe ore ata vbe vbo, Urise eva ni re adese keghi re aza na re yi. Domwande Urise mwen eni na tiere vbenian avbe:—Edogun, Esagho, Olowu, Owonokhorhokpo, Isekherhe; Oza Atakparhakpa, Usioda amwen, Obomwansosokpa, Osuta. Ise igbigbe ore urho okpokpa. Ite gha ma emwan nibun re vbe Museum, sokpan arhunmwun eva kekan oruore gue, Obasohan kevbe Oke Elaho. I vbe gua tise Iyotoba kevbe ovbehe hia esesemwense.

OWA ESUKU

EGHE 'nede gbaan, Esosi a na te y' esuku Emision (Mission). Eken a ya b' esosi ni na y' esuku vb' Ibadan ke 1899 do se 1900. A ke ghi ye "Cement block" doloe bo okieke yae khin esosi nokhua na ghi tiere 'St James's Cathedral na. Eken a ya bo esosi (St David's) ni na y' esuku vb' Akure vbe 1912. A ke vbe ye 'cement block' boe vb' okieke yae khin esosi nokhua. Vbe 1901 do se 1902, eken a vbe ya bo esosi ni na y' esuku vbe St Matthew vb' ore Edo ke 1915, do se ufomwen 1916. A ke weriegbe guoghoe y' eken boe ya khin no kpolo vbe 1919 do se 1920. Vbe 1960, a ke vbe ye 'cement block' boe yae khin nokhua na ghi tiere St Matthew's Cathedral na.

Sokpan, ke 1930 gha de ore a ke gha bo esuku y' ehe ughunghanhia vb' esuku Emision hia ni re Nigeria. Vb' eghe 'nede, ni 'College' i re ehe rokpa vbe Nigeria sokpen St Andrew's Training College Oyo kevbe o ka deba Kings College vb' Eko. University i ro hiehie o te do se 1947 na mu University ogho Ibadan gbo.

Ta vbe 'College' kevbe 'University' ghi gbae ehe hia vbe Nigeria nia. Vb' eghe ni, erha kevbe iyemo ni setin rhie ivbi-ran ye College iro Sokpan iran ghi setin rhie ivbi-ran ye 'University' nia.

Owe a ya khian y' ehe hia vbe Nigeria eghe ni, ikeke kpai-kpai a mien, imoto i ro hiehie. Eban nia, ikeke kevbe imoto ghi bun vbe d'omwan-d' evbo vbe Nigeria; 'Railway' (Train) schia ok'ehoho. Vbe 1909 gha de i ke gha hin ikeke. Koko i na suen gha la ok'erhen vbe 1910. 1915 i ke suen gha la imoto; 1918 vbe Port Harcourt ike suen gha la Railway (Train); Vbe July 1948 i ke vbe suen gha la ok'ehoho gha y' ehe hia vbe Nigeria.

Rhunmwund' ọni, ekponmwẹn kevbe urhomwẹn nọ n' Osanobua rhunmwund' alaghodaro nokhua na miẹn vbe Nigeria n' evbo-mwẹn. I ye vbe nerhunmwun n' alaghodaro ni gha khian rhin-rin-rin edede. Ise.

ADAZE

EMWIN eso kpataki ro na ya ren adaze. Emwin ni ore uyinmwun esi, uyinmwun nekhuerhe kevbe emwanta na ta gbugbehia. Omwan nei vbora no ma guoghoe okpa; omwan no fure khuerhe, omwan ogho kevbe omwan no gban-egbe n' emwin-dan na ru hia a tiere adaze.

No gban-egbe n' oyi na rha, no gban-egbe n' ohoghe ina ta, no gban-egbe n' orhure, no gban-egbe n' oghe, no gban-egbe n' okho na ru, no gban-egbe n' oregbe, n' otakho na ta, n' igbovo, n' ikhuiu, n' ighiku, n' ayon adagbegbe, n' esa, n' opakharha ihan, n' olighi, n' ohu-dan na mu, izohu, n' ozan kevbe no gban-egbe n' isote, se hia, omwan no rhie egbe ere y' omwan emwin na ru hia ore a tiere adaze. Eire no mwun ekpigno nibun, eire no mwun esin ra imoto, ra ose ra ukpon hichie sokpan, no ren negbe.

Adaze ovbiogue ma s' ogie no r' ekete no ma ren negbe. Rhunmwund' oni, okere n' ima gha ru emwin adaze gbugbehia: adaze i y' egbe ru emwin oya. Omwan no ru emwin esi hia ore a tiere adaze ra, adaz' omwan.

Ovbiomwan esi na bie ese ore a vbe tiere adaze. Ore a na yae bu cre we: Omwan i r' egbe, ekhoe omwan ye. K' eghe ovbokhan mwun ghade i ke gha ru emwin adaze, adaz' omwan; ore emwan hia ren mwun yi.

UHUAMWEN

Uhuamwen oghe Ugbugbehia ona khin

OKERE na gha huan gbugbehia, na ghe gbinruen hiehie. Na gha khue, na gha bien ihin-en obo kevbe oghe owe n' azigan ghe lere yo gha fian omwan re. Ibiba na gha ho ukpon hun-an esese na gha bonmwen egbe-ken, na gha khien ukpo ra okpo ebedi kevbe na gha dolu ukohunmwun yi esesemwense kevbe na gha kp' otowa na sien gbugbehia. Na gha kpe emirebo kevbe ekuye hia esese na gha kpakon kevbe na gha soghunu. Rhunmwunda, owa Osanobua ore egbe khin; a gha dogbe kevbe ukpo yi esesemwense, a ghi gha vbie mina ese, Osanobua ghi vbe gha gie avbe Angeli bu ima re do gha gu ima guan vb' iriovbe, gu ima vbe gha guan ese gbugbehia. A ghi gha wan yo, a ghi gha renwin yo, a ghi gha rhanro yo, a ghi vbe gha khian gh' odaro yo vbe emwin hia kevbe odekode n' ima rhirhi laihia.

Ukpon gha gbiruen gbe iru ghi laro gha rie omwan vb' uwu egbe. Ege ni erhon nugbadaze hia no khorhon s' ofi ghi re, o ghi mu eghe rhiara vbe n' akpakpa lalo omwan egbe.

Rhunmwund' oni, gha khue, gha ho ukpon nu gha huan, nu gha mose, n' emiamwen rokpa ghe la rue egbe rhunmwunda, emiammwun ore ikol egbe kevbe orhon.

Ayae bu ere we, ovbokhan gha kp' obo re hun-an, o ghi gu nowanren rie evbare ra, emwin vb' okpan okpani. Iruen i ma, ohoho i ma hiehie. Uhuamwen o ma se vb' emwin hia.

K'Ovbokhan gha de ore i ke ru emwin uhuamwen, ibiba ege ni na y' esuku vbe Ibadan. I ghi gha khue esese gbugbehia i ke gha rie esuku. I ghi vbe kp' obo i ke rie evbare kevbe vbi gha rie evbare fo.

EMWANTA

OKERE na gha t' emwanta gbugbehia, o gha r' uwu no ra, efe, rhunmwunda, emwanta o y' ekete ogie gb' igie, ore o ton evbo mu, ore o vbe mionmwan fan. Uwanmwən kevbe ukpon nofua ra, ogbonmwonkpa ore a ya gie emwanta. Ai ho na y' emwin iruen sike ukpon nofua hiehie, ore a na yae bu ere we, a gha mien ukpon nofua ra, ogbonmwonkpa, chi ghi gha khon omwan na ru. Oghogho kevbe onyemwən ore ase mu uwanmwən kevbe ogbonmwon-kpa.

Ohoghei ma hiehie. Ohoghei a ya gie ebiebi kevbe ukpon nekhui. Ukpon nekhue ke ghi r' ama oghe uwu, a khie kevbe irhiaeko. Sokpan vbo rhirhi gha ye he, emwanta, o gha khon mien oto vbe uhunmwun ohoghei.

Imuanmwən okpa ke kpe vb' oto vb' adese Ekhaguere n' Osula kevbe Awowo no r' Iko. Oba ke rhunmwund' oni giemwən ni ya bu ohien iran 'veva vbe owa Osula vbe June 1933. Ugben vb' iran 'veva ghi gui fo, i ke bu ohien gb' Awowo n' orhuan Oba, i ke vbe guę gui esesemwense rhunmwunda, no ma na rhie ogho kevbe uyi n' Osula. I na khama onren no ghe weriegbe ru vberio, no ghe kha we, orhuan Oba iren khin no gha y' aro tila enowanren no ye vbe Osula. I na we no rinmwian Osula, ore Osula na ya boe, iran hia na we tii, iran na we, erio omwan t' emwanta, erio omwan t' emwanta—Jacob Egharevba t' emwanta gbe. Ore Osula na mu Ogo ewisiki (whiskey) okpa me, ore i na ya niyen ma Oba, no vbe rhomwən esesemwense.

Vb' ukpo 1937, Ogiamwən Edo ke mu e be okpa na tiere ebe ewae ere l' obo ivbiere eva (Ikhinmwın kevbe Ogbefun) gumwən ni doloyi n' iren. Sokpan ugben vbi ghi tie 'nebe fo, i ke mu n' iran mu gię rhunmwunda, ei ma—emwanta i ro hie hie. I ke

egi na khama ọnrẹn nọ weriegbe gbẹn ọghe emwanta ni miẹn che na y' emasini (printing press) gbọn-ẹn ne-ẹn. Ọ ke vbe muẹn gumwẹn vbe 1938 vbe nọ ma na fiewerie gbẹn hiehie. I ke tobomwẹn muẹn weriegbe mu giẹe ghe ma—emwanta i rọ hiehie. Ọ khamamwẹn ghe D.O. o gbọn-ẹn, i na wẹ, eire D.O. ọ baeku sokpan, 'wẹ nọ ma t' emwanta ma ọnrẹn, K' ẹderio gha de, ekhue ma ghi giẹe ghi mu enebe ladian ọvbehe do se eghe uwu ẹre vbe 1940.

Vbe 1952, i ke ya de postal order ọghe ikpon ene vbe post office. Post-master ghi khian khien me, ọ ke ghi viọ ọghe ikpon iwene me. I ghi se Office (Museum) ni gha gbẹn eni yọ ni ya post ẹre, i ghi ghe, ọghe ikpon iwene nọ. I na mu ọghọe igbe nọ rọ weriegbe giẹe vbe Post Office. Uwuere ni, ọ na wa gha guọ zeze gha ghemwẹn. Ọ na gha kponmwẹnmwẹn nerhunmwun me. K' eghe ni gha de, i gha ghi ye Post Office ya d' emwin vb' obore, ọ wa miẹnmwẹn igbo viọ ku emwin. I gha we nọ kae, ọ wẹ, eire ọmwan vbemwẹn ọviọ igbo n' ọmwan na vbe gha kae rhin-rin-rin rhunmwunda, i ru ọmwan emwanta gbera ọni. Rhunmwunda' ọni, ọ kere na gha t' emwanta gbugbehia.

EGHE

EGHE ghan gbe; ighobioye nọ. O ma ke na mu eghe rhia hiehie sokpan, o kere na ru emwin hia y' eghe gbugbehia rhunmwunda, eghe ke ghi r' emwin kpataki vbe ede agbon emwan hia.

Nọ mu eghe rhia, omu igho kevbe uwa rhia. Emwin na renren 'gha gha setin ru ere, o kere na ru ee egięię na ghe muen khe akhue rhunmwunda, eghe i mudia khe omwan rokpa. Emwin k' emwin na ru vb' eghe, o ghi da-gben, o ghi luro, o ghi vbe gha ma esesemwense.

Sokpan, oyonu-a nokhua eghe, khin. Eghe eha a mien vb' ede: eghe owie, eghe avan kevbe eghe ota. Eriọ o vbe heko ye "katakpi" werie khian. K'ede ya s' ede, K'izola ya si zola uki ya s' uki, ukpo ya s' ukpo kevbe rhin-rin-rin—ededemwede agbon nei fo.

Aronde nokhua eghe khin. O kere na gha lelee gbugbehia: nọ ma lele eghe ghi bibi ode, eghe ghi soraе rhunmwunda, ei mudia khe omwan rokpa. Eghe okpa nọ r' emwan banban na sokpan, wanwan, o ghi rhule gbe-ra. Se hia, emwin esi na ru vb' eghe, or a ho na niyen onren.

Vb' oghomwen, eghe i lele ya ru emwin ni ru hia rhunmwunda, eghe ore Ogie ede, uki kevbe ukpo vbe n' emwanta vbe r' ogie emwen ra, ota hia. Ifuanro okpa gha wi omwan, emwin nokhua o wiri. Eghe ore omuhen kevbe ufomwen emwin hia; ibiba eghe n' okaro kevbe eghe n' okieke.

OVIEN KEVBE IYOHHA

OVIEN kevbe ẹki ọvien i ma hiehie. Okpia ra, okhuo na y' igho de a tiere ọvien. Vberio a ma bu evbo okpa na gha tiere evbo ọvien. A ma bu idunmwun okpa na gha tiere idunmwun ọvien. A ma vbe b' owa okpa na gha tiere owa ọvien. Sokpan, emwan n' ikpata munọ-en vb' egbo kevbe oghunmwun n' okuo munọ-en ya khien vb' evbo ọvbehe a ya khin evien. Rhunmwund' oni, o ma ke na gha miẹn ọvien kevbe na gha do eki ọvien hiehie.

No khare gh' ọvien ma wẹ nọ f' ikpin-hanbo ẹre okpa y' erhen ghe nọ ren vbe nọ ye he. Rhunmwunda, ikpata munọ ivbi-ogie kevbe ekhaemwen, a ghi vbe ya khien iran vb' evbo ọvbehe ya khin evien. Eriọ ikpata kevbe okuo vbe munọ ekhaemwen kevbe egbede ya khien vbe evbo ọvbehe ya khin evien. Rhunmwund' oni, o ma ke na gha miẹn ra, na gha do ẹki ọvien hiehie. Vb' oghomwen vb' ekhomwen hia, i he ọvien kevbe ẹki ọvien na do vbe n' iyayi he esu kevbe iwina onren hia.

I kponmwẹn ariọba British vbe Europe kevbe oghẹ Amerika (America) ni fannọ evien hia kua, ni vbe y' uhi gbangbaan-gban na ghẹ miẹn ọvien kevbe na ghẹ do ẹki ọvien hiehie. Omwan k' omwan na rhirhi miẹn ghọ mwẹn ọvien ra, o do ẹki ọvien, a ghi guẹ gu ẹzọ uhi, a ghi riọe oya esesemwense.

K' eghe ni gha de, iran ke ghi mwanmwan ẹki ughunghan oghẹ esiesi y' ehe ẹki ọvien. Vb' igiemwin, ẹki ivin, ẹki ofigbon, ekoko (cocoa), araba (rubber), igedu (timber) kevbe ni kere; kevbe iwina ikpede, Izola kevbe uki ye ihe iyoha. Ovien kevbe iyoha i ma hiehie.

No miẹn vbe n' emwan eso y' evien yin khọ he n' ede, ameve ghi ladian vbe aro ẹre. Avbe Isekiri y' evien yin khọ gbe vb'

eghe ni, vbe na gh' ewe kẹkan, eriọ iran ghe evien iran hia.

I rinmwian Osa Nọ d' obo okuo, ikpata kevbe olighi yi, Nọ gie irhanro emwanta alaghodaro kevbe ofumwengbe nọ gbae gha wan yọ khian vb' otọ agbọn hia—ise.

EGHE EMIANMWEN

ZE vbe ni ka kha we, vbe 1910 vb' Ebue ore Okhuoba Omoloto Osodin n' otiamobo ta umian emianmwēn na mamwēn wē, ede gha rie, i gha mwēn igbo, mwēn emo mwēn owa, mwēn emwin hia sokpan, egberhanmwēn khian gha ro. Ohan kè ghi mumwēn yo esesemwense, rhunmwunda, egberhanmwēn ore o s' efe; i ke gha muen rougbugbehia.

Vbe December 1920, Ahusa okpa (Alufa Moru) ke khamamwēn vb' Okigwe we, i gha khuonmwīn emianmwēn ni gha mu vb' egbe okhuo lavbasevba, emianmwēn ni gha kpe esesemwense ya se od'ukpo isenyan-gban ra, iyeva. Emwēn na ke ghi kakabo kpanmwēn odin esesemwense. Omwan khuonmwīn l' ikpede isen kekan o ye ba suce, a ma we, ukpo isenyan-gban ra, iyeva. O gha ye vberio, ona khe ke we, i gha r' ekhun kevbe okhonmwon l' ede agbonmwēn no deke. Ohan ke ghi mumwēn yo esesemwense. Afa ni ke ghi khamamwēn ni ghe gie egbe womwēn yo rhunmwunda, emwin n' iren mien, iren tae.

Vbe May 1921, eyen ke kuanmwēvb'owe vb' urorame vb' ason vb' owa ima vb' Okemole. Iyemwēn kevbe Edionmwān Uwangu Igiehon ke ghi mie ukhunmun yo me, o ke ghi vbe fo. Vb' ukpo ni, o ghi se ikpede iweva vb' uki September, a ma mobo ren emwin okpa no sunu sokpan, udumwēn ke ghi kpaen gha bo kpi, kpi, kpi.

Vbe June vbe Sapele 1922, eko ke ghi mumwēn khien vb' iriovbe vb' ason malo-malo-malo; oto hia na gha legamwēn. Ede te gbe, esagien kevbe ivbiokhoe negieree na le gha rio-mwēn uhunmwun. Ede n' ogieva vb' owie, i na kpao gha rie Hospital vb' evba. Omwan ni renren ke ghi r' evba, a ke ghi tiere, Dispenser Johnson—ovbie Sierra Leone no; o te gha r' Edo yi;

'ma ren egbe esesemwense. O na rhie ukhunmwun me, o ke vbe rhiemwen bu S.M.O. (Obo Smith). Obo Smith ke ghi rhie ukhunmwun me; o ke vbe gele gbele okhoe nibun sokpan, emianmwun ni ma fo. O na gha rhie ukhunmwun yomwen-re gbaro ghemwen rhin-rin-rin i te do kpao gha die Edo vbe September 1923 do gbaro gh' egbemwen fo.

Obo Wilson vbe January 1924 gbaro ghemwen vbe Hospital vb' Edo. O ke ghi khamamwen we emianmwun no loghomwen ke ghi re emianmwun udu (olegbe esagien). O ke vbe bumwen ude we ni ghe da ayon nowegbe yo ra ru iwina no wegbe. I ke ghi rhie; o na rhie ukhunmwun yo me. K' eghe ni kpao, edionmwun Uwangue Igiehon ke gha gbaro ghemwen rhin-rin-rin o te do s' eghe uwu ere vb' ikpede ihinron vbe uki March 1925. Iyemwen (Okunzuwa) na do rhiemwen gie oten onren ovbehe na tiere Uku-logun Edokpayi. Oni vbe gbaro ghemwen rhin-rin-rin do se 1926, no fi-ya. Iyemwen na vbe ye rhiemwen bu oten onren okpa na tiere Onaghise no r' uhunmwun Iguisi. Ona gbaro ghemwen kpe esesemwense do se 1935 no do namwen ukhunmwun ni tobomwen gha ho lo ya gbaro gh' egbemwen. Emian-mwen na ke do gha hie, o ka vbe gha fo kherhekherhe.

Vbe 1927, i ke do rhunmwund' emianmwun na rue iha omini-gbon gue. Osunde okpa vb' uwu oka ni mamwen niha omini-gbon ke ghi khamamwen we, i gha khuonmwin vb' ede gha rie sokpan, o gha s' eghe ni ne, ni ghe ye hospital ya rhie ukhunmwun-ra; ni ya lovbie rhunmwunda, a gha gbaro ghemwen vb' owa, o gha fo. Eri o i vbe rue amobo na tie gue baemwen emianmwun na. Vbiyeke vbi guoe ne, edokpa i na do tie amobo-mwen. Ohan kevbe orhirhi na mumwen, i ke gha guo zeze vbi mien emwin ni ro. Ama oghe uhunmwun—ogboi i ren ona—kevbe oghe udu ke ghi de kugbe rhunmwunda, o gha de kugbe vberio, a ghi ren gh o gha si emianmwun nokhua ne rherhe fo. I ghi ze muen ro, i na we, o ma, a yae z' ere we: avbiere wu ya, vbo ma he s' ede uwu ere levbasevba, che n' ebi na ro, owonwon rhie rho. Gele-gele, vbe n' afa ni khamamwen, erio de fi. Egbe okhuo, ore i na vio emianmwun na. Okhuo ni vbo guemwen vb' ima gba ru, emianmwun na sunu, i, ma ren. Ugben vbo ghi kpao vb' owa-mwen, o ghi r omwan ukpo igbe, o na weriegbe re; ma na vbe weriegbe gba gha ru, emianmwun na na

weriegbe suen. k' eghe ni gha de, obomwen ma fo vb' ukhunmwun. Eghe okpa i ro ni ya rhie eghe y' oto ni ya gbaro gh' egbemwen.

O ghi se 1953, emianmwun na na gha kpolo yo; o na kakabo gha rumwen eghe hia. Vb' ikpede ihinrin vb' uki January 1957, vb' ogi' avan wowowo vbi we ni kpaegbe vb' isi-wina (Museun) owemwen eveva ke ghi khuamwen. Atata-owemwen eveva na ye vbe na vio ukohun yi: o na ye fughefughe. K' ason nin kpao vbi s' owa, i ma ghi ne, i ma ghi hio o te do s' ikpede iwene vb' uki ni. O re Obo Bradbury na munmwun gha rie Hospital gie Obo Drew no gbaro ghemwen. Vberio, o ke uzola okpa kekan n' ima suen iwina itan n' Obo Dike mwanmwan-en n' ime vb' Bradbury khian gba ru. A ghi tiere 'neghedene na munmwun se Hospital,—vberio, ai ne, ai hio, a rhunmwunda ere munmwun gha khian—iran na suen iwina oni. Oni ghi te gha fo kherhe, emianmwun ovbehe na re, na ma ro, na ma ko. Emianmwun na re vbe na re, emianmwun na re ominigie. I ghi setin kpao ton oboto ton owe mu hiehie; ta ghi fian evbare yomwen unu Emwin ni ghi setin tobomwen ru rhokpa ghi ro hiehie. Vb' uwu-ere ni, Obo Dike ke ghi k' Ibadan re kevbe iran eso debae Nowanren Parry ne Principal University College vb' Ibadan ekporio. Iran na do tuomwen vbe Hospital. Hospital hia na ye vbe eki n' emwan hia ni do gha mien-mwen. Ore Drew na ya rhie olakpa na ya gha ve emwan. Sokpan, vbe na hia se, t' emianmwun na ye gha ve yo, ve yo. Vbe n' Osanobua ya s' orionmwun do s' ede n' ere ni ma na wu, oyunua no. 'Me tobomwen o yae z' ere we, a khian le n' uwu, ore a na dekun emianmwun. Ere na ke ghi de kaen emwen n' obo ominigbon ni tae (Osunde) we, eghe k' eghe ni rhirhi ya gha khuonmwin ni ghe ye Hospital ya lovbie rhunmwunda, a gha sinmwon-en vb' owa, emianmwun ni gha fo. O gha ke, emianmwun na gha te gele fo, a kpa we i ma ye Hospital. Sokpan, vb' emwanta, Obo Drew y' etin y' ewaen k' ahuemwen-omwan gbaro ghemwen esesemwense. Ai setin tiere obo kekan sokpan na tiere erha emwan no gbaro ghe. O zozo y' emwenmwun esesemwense. O ke tie Obo Akingbehi no gbaro gh' aro vb' ase okpa no do gbaro ghemwen. Obo Akingbehi rhie uhunmwun me, o ke vbe danmwon-en khama Obo Drew gh' aro i khiamwen sokpan, emianmwun no romwen egbe ore o kpa

rhunmwẹn aro kevbe wẹ, emianmwẹn ni gha sẹtin fo, aro gha weriegbe re vba rhie ukhunmwun kherhẹ yọ, Ikpẹde vb' uki February vb' ukpo ni ọre i ke Hospital s' owa na na gha k' owa mumwẹn yo. Ọka-ohẹn kevbe 'fada eso (fathers) ọghe esosi 'Catholic', ohẹn ọghe C.M.S. kevbe ohẹn 'sirafo (Aladura) do gha nerhunmwun mẹ ugbugbehia i te do kpao ghadie owa.

Ugben vbọ ghi s' uki May, Ọbo Dike na weriegbe re gh' iren khian mumwẹn gha rie Hospital vb' Ibadan n' iran ya gbaro ghemwẹn vb' odọ. Ọbo Drew na wẹ nọ semwẹn-rae ghi sẹtin mudia hiehie wẹre 'rẹn họn nia wẹ, Ọbo Brown no re University Hospital vb' Ibadan die Edo. Ọ wẹ ọ gha re, ọ sẹtin danmwẹn-mwẹn ghe 'mwẹn kevbe wẹ, ọ gha danmwẹn-mwẹn ghe nẹ, iran gha rẹn ukhunmwun na gha rhie mẹ. Ọbo Dike ke ghi weriegbe kpao levbasevba, Ọbo Brown ma re hiehie. K' eghe ni kpao, ebo nekhui hia fẹfẹ nibun hia na gha gbaro ghemwẹn.

Vbe April 1960, Governor nọ re Ibadan Sir John Rankin ke ghi ri' Edo vbọ ghi muegbe no gha ya kpao gha rie evbo-ebo fẹfẹ z' obọ vb' iwina. Ọ ke ghi dae esesemwẹnse vbọ sẹ Museum ya nọ emwẹnmwẹn vb' iran khama onrẹn wẹ, egbe ma rhanmwẹn; ọ ke ghi gie na wẹmwẹn do gh' iren te s' evba. Eriọ vbe nọ vb' ufomwẹn ukpo ni vbe November 1960, Governor General' Sir James Robertson vbe rie Edo. Oni vbe se Museum te vbe do miẹnmwẹn. Ọre iran na khama onrẹn gh' egbe ma rhanmwẹn ghi r' owa. Ọre ọ na ghi gie iran n' iran wemwẹn do gh' iren te se Museum gh' emwẹn te rọ n' iren gha te gumwẹn guan.

Vb' ukpo nọ gbera (1963), vb' uki October, Ọbo Munro na rie Edo. Ọ ke ghi mwẹn eko rhiẹnrhiẹnrhiẹn ghemwẹn vbo da re ni; ọ ke vbe dae esesemwẹnse vb' ukpo-emianmwẹn ni ye. Ọre 'mẹ vb' ọre na do gba z'iro gh' iren gha mumwẹn gha rie Eku. 'Ma ke ghi bu ede yọ. Sokpan, ọ ghi zẹ kpẹ ọ na do mumwẹn gha rie ọghe Edokita (Ọbo Stephenson) no r' Edo 'mwan. Igbaha 'ma bu yo; ọ na do danmwẹn-mwẹn. Ọ we, ọlegbe esagiẹn ọre ọ loghomwẹn kevbe wẹ, na mumwẹn gha rie Ibadan. Ọbo Munro ke ghi kue yọ sokpan, i na wẹ he-n—gh' Eku n' ima ka gha kha, 'Ọre igha ka yo. Ọre Ọbo Munro na do rinmwian Ohẹn Robinson nọ mumwẹn gha khian; ọ na gele ru vberio. A ghi s' evba ni Ọbo W. J. Williams, ke ghi gbaro ghemwẹn esesemwẹnse kevbe emwan ni r' ototo're l' omwan uzọla eva ni gb' evba i ke weriegbe

gha de. O na viọ Ukhunmwun ughughan nibun me ni gha lo vb' owa kevbe we ra, o gha fo ni gualo de vb' Edo. Ore i ghi ye k' eghe ni gha de no ma na fo, no ma na hie. Emwan hia ni gbaro ghemwen, egbe wo iran. A lo igho, igho fo vb' aza. Etin fo, ewaen wiri. Edokpa i ghi khe levbasevba, ede uwu iro fo, obalo, ukpokpo kevbe oyanghan ghi fo fefefe.

EKPOŃMWEN

EKPOŃMWEN ke ghi r' otuę oęhe oęevbaru n' omwan k' omwan no rhirhi ru emwin esi no rhięnrhię omwan ra, no vuon omwan aro. Ore Edo na yae z' ere wę: OkpoŃmwęn-se, o we na ruere ovbehe rhunmwunda, ese na gha ru n' oghodan, a ghi ruęę n' awa, awa gha mięn enaręn, o ghi y' crhunrhunmwun tuoc. Rhunmwund' oni, irhie ekpoŃmwęn n' emwan hia ni rhie iyobo mę ra, ni gbaro ghemwęn kevbe ni do tuomwęn vb' eęęę n' emianmwęn na na kakabo mumwęn guę vba mumwęn gha rhie Hospital vb' uki January, 1957. I kpoŃmwęn iran hia kevbe emwan kpataki na: emwan vbe 'niwanręn E.E. Omere, S.I. Egbe kevbe Alabi Idaho ni gbaro ghemwęn ke January se August vb' Ukpo ni (1957). 'Nowanręn B. O. Ero no gbaro ghemwęn ke October vb' ukpo ni do se April 1961. Nowanręn N.O. Ighodaro no gbaro ghemwęn ke November vb' ukpo ni do se 1960. Otęnmwęn (James Aguebo) no gbaro ghemwęn vb' ukpo ni do s' eęęę uwu ere vbe February 13, 1960. 'Asiruwa', n' ima gba y' esosi kugbe vbe gbaro ghemwęn do s' eęęę uwu ere. Okhuo-oba Igharo no gbaro ghemwęn ke 1958 do s' eęęę n' ere.

Debae iran na, i kpoŃmwęn ovbiyemwęn E.G. Egharevba no re Sapele kevbe ibieka 're hia. I kpoŃmwęn Anofi Eguobadia kee k' etęn onręn Ayi kevbe 'nokpa—no fiya—(Adijatu) kevbe Rali vb' iyobo ni iran rhie mę k' ahoęmwęn omwan ni iran mwęn ghemwęn. I kpoŃmwęn Imadiyi (ovbie Edowaye—otęnmwęn—) ze vbe no setin gbaro ghemwęn se. I kpoŃmwęn Nowanręn S.E. Jinodu no b' owa ye "New Benin" Okpia na gbaro ghemwęn esesęmwęnse. Owa-mwęn nogieva ni bo ke ni ka bo vbe "New Benin", gia kha gh' iręn o wa mudia boę mę. Vb' emwanta, o y' etin y' eęwaęn gbaro ghemwęn; o y' iwina k' ahoęmwęn-omwan

gbaro ghemwẹn. 'Rẹn k' amwẹnren, t' iran ye gagamwẹn khian do s' ede n' ere. Osanobua no gbaro gh' iran n' iran vbe gha ru gh' odaro vbe n' iran ho. I kponmwẹn etenmwẹn (Igue), Timothy Ajayi kevbe Nowanren E.F. Akpata debae amwẹnren (Ayo Akpata) esesemwẹnse. I kponmwẹn Obo Dike; se hia, Obo R.E. Bradbury no kakabo gbaro ghemwẹn esesemwẹnse. Osanobua debare kee k' ibieka re. Sokpan, ekponmwẹn ede hia ore i mwẹn n' ovbiyemwẹn (Oni Emovon Agbeleri kevbe ovbiere Bernard Osifo) kevbe ovbi—oten-mwẹn Osarenmwindamwẹn Egharevba. Eriọ i vbe kponmwẹn Nowanren K.C. Murray (Director of Antiquities) vb' iyobo no rhie me vb' eghe ni na gha re Museum kevbe eghe na na mumwẹn gha rie Hospital. I kponmwẹn Graham Connah no vbe gbaro ghemwẹn esesemwẹnse. Ufomwẹn 1961 ore Nowanren Connah ya re do wina vbe Museum vb Edo; k' eghe ni gha de, o ke rhie obo rhie owe yo gha gbaro ghemwẹn khian o te do s' eghe no ya weriegbe kpao.

1946 gha de ore i ke gha khiẹn ebemwẹn hia fefefe vbe Museum rhin-rin-rin, o te do s' eghe ni na do de gb' oto vbe 1957. Ovbo-khan no r' ototomwẹn na rhie y' evba na suẹn gha khiẹn-en k' eghe ni ya kpao do se 1960 na rhiere hin evba re. Nowanren Allison no do mwanmwan Museum oghẹ ogbon na ye Post Office nedẹ vb' che no ghi ye na vbe gbaro ghemwẹn esesemwẹnse. Vb' eghe okpa, o ke ghi mu ogo esinapu (Shinapp) okpa gumwẹn; o ke vbe khama Nowanren Osula—no wina 'vba ekporio—we, na ye gha khiẹn ebemwẹn 'vba na vbe gha rhie igho gumwẹn vb' eghe. K' eghe ni gha de, iran ma baeku do s' eghe ne Nowanren Connah na re no do ru enosere. I kponmwẹn iran 'veva esesemwẹnse. I vbe kponmwẹn Agho Okundia kevbe amwẹnren (Imade) ni r' Odighi vb' iyobo iran. Ikponmwẹn Iyoha Aguebo kevbe Obasuyi Eke esesemwẹnse y' iyobo iran.

I kponmwẹn otu Apena, Iledi Eweka, Benin Youth League, Nowanren J. D. Akeredolu, Nowanren Dalton O. Asemota (Osemwota) kevbe ni kere vbe ohe igho ni iran ya gumwẹn. I kponmwẹn Okhaemwẹn Eghobamiẹn n' Osuma; okhaemwẹn Ekhatọ n' Ihaza; okhaemwẹn Lawal Osula n' Arala; okhaemwẹn Uwagie n' Obadesagbon; Nowanren H. O. Amadasun; Okhuoba Iriagbonse Ogboghodo; Evbu kevbe ni kere vb' otu emwanta kevbeemwẹnmwandomwan. I kponmwẹn Ivbie Egharevba hia nire

owa kevbe nire isi, ikpia kevbe ikhuo, ibiekikpia kevbe ibiekikhuo ni gbaro ghemwen. N'Osanobua deba iran hia Ise. Ikponmwen Rev. O.C. Robinson n' omu mwen gha rie owa okhnmwen vb' Eku vb' April 1964 vb' ekpa erinmwian oghe D.A. Munro. Ikponmwen avbe ohen esosi na: Catholic, Anglican, Baptist, Apostolic, Cherubim and Seraphim, Seventh Day Adventist, kevbe nire do gha nerhunmwun me ugbugbe hia.

A GHA WU, ARIE

A khare wẹ, ei mwẹn a ma wu kevbe wẹ, a ma khuonmwın, ai wu. Omwan nọ khuonmwın kpe, o ma fe, to gha wu rhunmwunda, uwu o ghi sik' ore se.

A gha wu a rie,
Uwu ma ren ogie;
A gha wu a rie,
Eko ma-ren oya;
A gha wu a rie,
Emianmwẹn ma-ren egbe nọ riee.

A gha wu a rie,
Ogiuwu o gb' omwan rie ase;
A gha wu a rie,
Ede uwu i hon ebo;
A gha wu a rie,
Ede uwu iro fo.

Sokpan, ta nerhunmwun na wu uwu omwanta n' iyeke ghe kho omwan n' iyeke omwan vbe gha ma vberio. I yayi gh' ime gha wu uwu omwanta vb' etin Osanobua. Vb' igiemwin, vbe February 1949, nowanren E.F. Akpata ke ghi khamamwen wẹ, 'ren r' imina vb' ason okpa—a ke ghi rhie iren y' uko n' urho erinmwın ofumwegbe n' iren gha vio emwan-esi nihuaren la owa: n' emwan-dan ghe la owa. O wẹ, vb' owarokpa ni i ke gha de ni do la owa sokpan, 'ren na gha y' obọ damwen yi ni ghe la owa. O wẹ, iran ni r' arioba erinmwın ni hia ghi deghere iran na tu kankankan wẹ: Ghe dae-yi, ghe dae-yi. Gięe la owa; usun emwan kpataki vbe ne Jacob Egharevba ye, ore a ho nọ la owa.

Ọ wẹ k'ederio gha de, t' iren ghi ghemwen vb' omwan nohu-
anren. N' Osa gele gięe gha ye rio—ise.

Ọgiuwu n' uko emwanta, ẹi gh' omwan aro hiehie. Vbe no
tie ogie, erio o tie okhaemwen; vbe no tie odafen, erio o tie
ivbiogue, vbe no tie ikpia, erio o tie ikhuo, vbe no tie edion, erio
o tie ibie.

Banban-na nia, ti ghi khe ẹghẹ k' ẹghẹ kevbe wẹ, i gha rere
kie nuen vbu gha s' obo vb' urho do rhiemwen gha rie arioba
erinmwin ofunmwegbe ni vbe na tae ya. Ogiuwoun' uko emwa-
nta no r' ose emwan n' okieke, o khin ẹghẹ ni o.

EMWIN EGHE KEVBE AZEYUKPO

A yae bu ere we, emwin eghe a ru n' eghe kevbe we, eghe, o ze vba-ru.

Okpa ni no we deghe khare we: a z' o mwan y' ukpo; a muen y' ukpo; ra, a rhie ere y' ukpo. Ogho kevbe uyi a ya ren na mu y' ukpo no yo, ibiba vb' uwu ebu.

A biemwen vb' ukpo 1893.

A mumwen gha rie Ibadan vb' Ufomwen November 1898.

I suen esuku vbe Ibadan vbe January 1899.

A rhiemwen y' olotu ibiaka vb' ukpo 1901.

Erhamwen fiya vb' ufomwen December 1902.

A yamwen z' oguomwandia n' oten erhamwen (Ogbomo n' Oza) 1903.

A rhiemwen gha rhie eghute Oza n' Ogogoro vbe 1906.

Amerhen hihe kuomwen vb' eghute Oza n' Ogogoro vb' ima rie olokun vbe 1907.

'Ma k' oza n' Ogogoro si kpao gha rie Oza n' Isi vbe 1908.

I kpao vb' obo Ogbomo vbe 1909 gha die eghute Ebu.

Vb' ufomwen 1911, i kpao gha rie Akure (Eku) ya gha y' esuku vbe St David's C.M.S. School.

Iyemwen nokhua (Ajayi) fiya vbe 1911.

I s' amẹ vbe St Matthew's Church vb' Ore Edo March 7, 1915.

I suen esuku fefefe vbe St Matthew's vb' Ore Edo vbe 1915 ya se 1916.

I kpao gha rie Warri vbe 1917.

I wina-en vbe P.W.D. vbe November 1917 ya se April 1918.

I kpao gha rie Port Harcourt vbe May 1917.

I kpao vbe Port Harcourt gha rie Okigwe vb ufomwen November 1918.

I weriegbe gha die Edo vbe March 1921.
 I rhie okhuo vb' ukpo ni vbe April (1921).
 A bie ovbimwen n' odion n' okhuo (Victoria Ikponmwosa) vbe
 January 28, 1922.
 I kpao gha rie Sapele ya gha do eki vbe March 1922.
 I weriegbe gha die Edo vbe September 1923.
 I b' owa-mwen no r' Oweko vb' ukpo ni (1923).
 I b' owa-mwen no r' Uselu vbe 1925.
 A bie ovbimwen n' okhuo n' ukpogieva (Comfort Oghomwen-
 semwen) vbe April 27, 1927.
 Oyi do rhamwen vb owa-mwen vb' Uselu vbe November 1927.
 Iyase Okoro-otun do tuomwen vb' owa vbe December 29, 1928.
 A bie ovbimwen n' okhuo n' ukpogieha (Eunice Itohan) vbe
 February 6, 1929.
 Ebemwen: 'Ekherhe vb' itan Edo' ladian vbe February 1933.
 A bie ovbimwen n' okpia n' odion (Joseph Osarogieagbon) vbe
 June 10, 1933.
 I de emasini na ya gbẹn ebe (Printing Press) oḡhe obo mwen ya
 gha wina vbe April 1934 (ore i ya gbẹn ebe Okha Edo kevbe
 Agbedogboyo vbe 1935)
 Iyemwen (Dorcas Okunzuwa Egharevba) fiya vbe January 27,
 1936.
 A rhiemwen y' akowe Iwebo hia vbe April 1936.
 Idaho rhie ovbiere n' okhuo (Okhuoba Imasuen) gumwen
 ronmwen vbe February 13, 1937. Nokhuo ye guemwen nia
 Oba mu Egie Obakhavbaye gumwen vbe October 27, 1938.
 A bie ovbimwen Jane Osarenkhole vbe May 20, 1940.
 'Me kevbe Aihioḡba Obasuyi koko igho-uhunmwun vbe Ward 4
 'nede vbe 1940.
 Ovbokhanmwen (Okhuoba Hanah Omozuwa Egharevba) fiya
 vbe March 1, 1941.
 A bie ovbimwen David 'Sonarae vbe August 4, 1942.
 A bie ovbimwen Clara Osemwonyenmwen vbe March 15, 1945.
 A rhiemwen ye no gbaro ghe Benin Museum (Curator) vbe
 June 1946.
 I la ok' ehoho gha rie Eko ya do iko 'Preservation of Antiquities
 of Nigeria' vbe July 1948.
 Resident kevbe D.O. rhie ase me ni gha gbẹn iyen y' ebe iyen

“Edo Voice” vbe 1949.

A rhiemwẹn ye Chairman Committee oḡhe Ward “L” vbc 1949

A biẹ ovbimwẹn Deborah Enina vbe May 20, 1949.

I ye Ibadan ya do iko International West Africa Conference vbe December 1949.

A rhiemwẹn ye Chairman oḡhe Adult Education Committee vbe 1950.

A biẹ ivbimwẹn (ivin eva—Taiwo Osaman kevbe Kehinde Omosovbiye-) vbe December 18, 1951.

Governor zemwẹn y’ otu Antiquity Commission of Nigeria vbe 1953.

I rie ase ezọ ohoghei n’ ivbi-ekokoma ogbe mu bamwẹn vbe October 21, 1953.

I la ok’ ehoho gha rie Eko ya do iko ‘Antiquity Commission of Nigeria’ vbe September 1954.

I la ok’ ehoho ya do iko ‘Antiquity Commission of Nigeria, vbe Jos (Northern Nigeria) vbe January 1955.

I gbẹn ebe gie Benin Divisional Council n’ iran gb’ rogba ibiliki (Block) lega Usama kevbe Eguae Edaiken vbe February 1955.

I y’ iko oḡhe ‘Antiquity Commission of Nigeria’, kevbe Historical Society of Nigeria vbe University College Ibadan vbe December 1955.

I ya bae ibiliki y’ Eguae Ogiso (Igodo)—Ogiso n’ okaro — Ugbekun vbe March 1956.

I ya bae ibiliki y’ Eguae Ogiso n’ Ere buru vbe Second East Circular vbe June 1956.

I la ok’ ehoho ya do iko Antiquity Commission of Nigeria vb’ Eko vbe October 1956.

A biẹ ovbimwẹn Adukpe Egberhanmwẹn vbe December 6, 1956.

Emianmwẹn ni khuonmwın na-de-kunmwẹn vbe Benin Museum vbe January 9, a na mumwẹn gha rie Hospital vbe January 14, 1957.

Ogienebo (Queen Elizabeth II) mu egie M.B.E. gumwẹn vbe January 1, 1962.

Nonwanrẹn D.A. Munro gu ‘Nikhamwinse vbe University Ibadan z’ iro na gbẹn Itan Ede Agbonmwẹn vbe July 1964.

